



Durham E-Theses

The development of geographical information systems for the 1989 kenya population census

Mwangangi, Isaac Kioko

How to cite:

Mwangangi, Isaac Kioko (1990) *The development of geographical information systems for the 1989 kenya population census*, Durham theses, Durham University. Available at Durham E-Theses Online: <http://etheses.dur.ac.uk/6145/>

Use policy

The full-text may be used and/or reproduced, and given to third parties in any format or medium, without prior permission or charge, for personal research or study, educational, or not-for-profit purposes provided that:

- a full bibliographic reference is made to the original source
- a [link](#) is made to the metadata record in Durham E-Theses
- the full-text is not changed in any way

The full-text must not be sold in any format or medium without the formal permission of the copyright holders.

Please consult the [full Durham E-Theses policy](#) for further details.

The Development of Geographical Information Systems
for the 1989 Kenya Population Census

by

Isaac Kioko Mwangangi

Thesis submitted for the degree

of Master of Arts

October 1990

The copyright of this thesis rests with the author.
No quotation from it should be published without
his prior written consent and information derived
from it should be acknowledged.

University of Durham
(Department of Geography)

UNIVERSITY LIBRARY
DURHAM

DURHAM UNIVERSITY LIBRARY

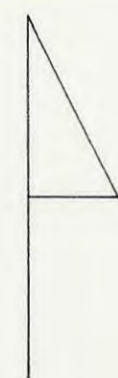
3 0104 00563842 8



17 OCT 1991

ACCESSION No.

FIGURE 9.12 AREA1 POPULATION DENSITY MAP



K E Y

PERSONS PER :SQ.KM

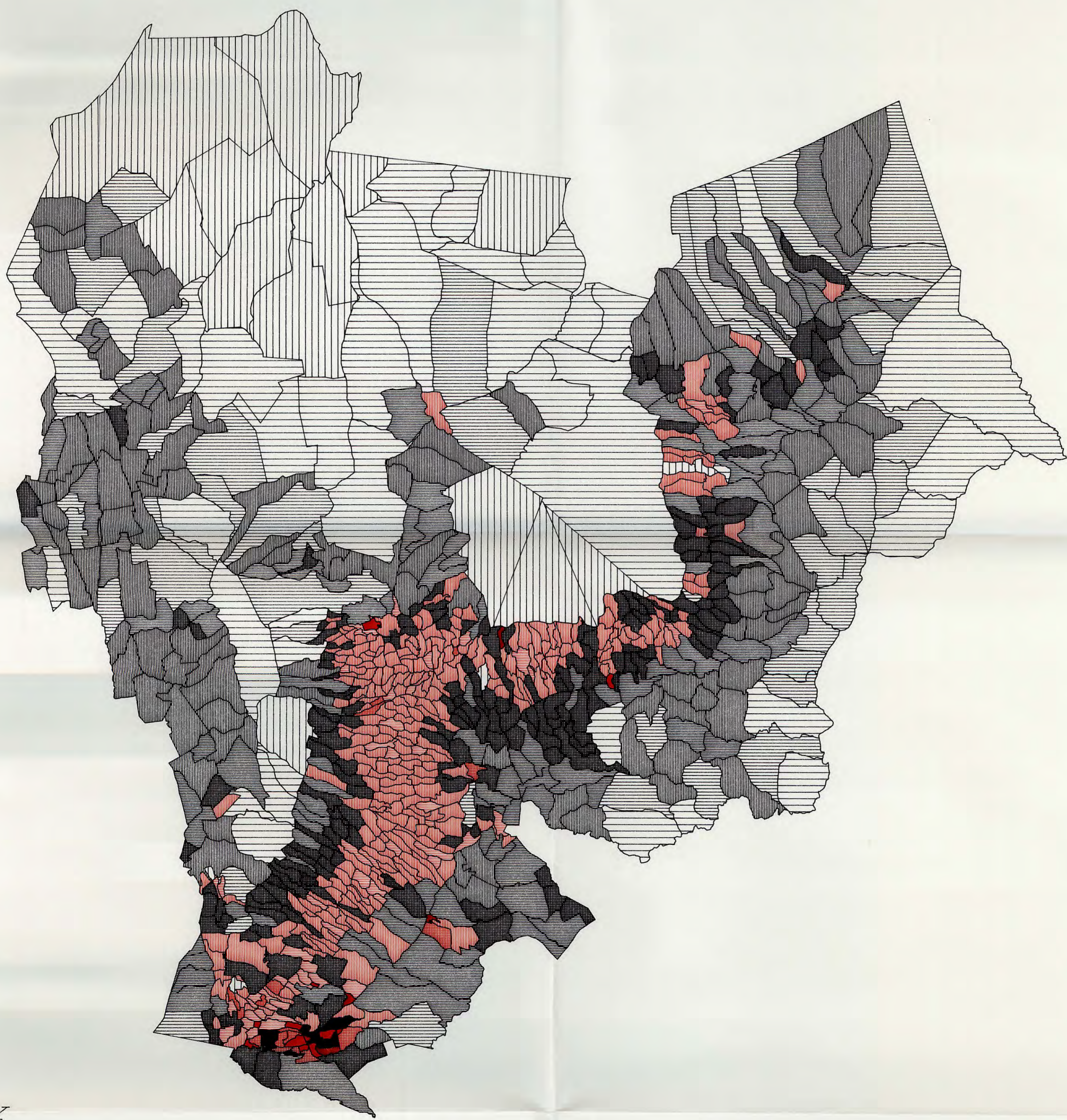
- | | | |
|----------|-----------|-----------|
| 6-25 | <=5 | |
| 101-200 | 51-100 | 26-50 |
| 801-1600 | 401-800 | 201-400 |
| > 6400 | 3201-6400 | 1601-3200 |

SOURCE: THE 1989 POPULATION CENSUS

The Sub-Location boundary and population information was provided by the Assistant Chiefs during the population census field mapping exercise

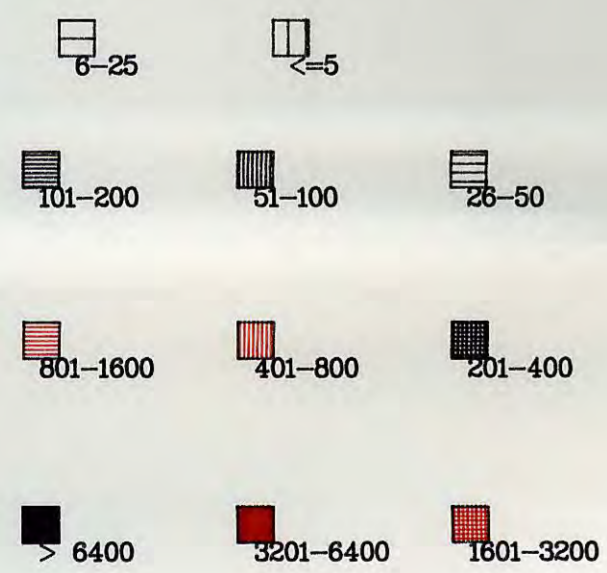
Scale 1:800000

FIGURE 9.13 AREA2 POPULATION DENSITY MAP



K E Y

PERSONS PER SQ.KM



SOURCE: THE 1989 POPULATION CENSUS

The Sub-Location boundary and population information was provided by the Assistant Chiefs during the population census field mapping exercise

Scale 1:600000

FIGURE 9.14 AREA3 POPULATION DENSITY MAP



K E Y

PERSONS PER SQ.KM

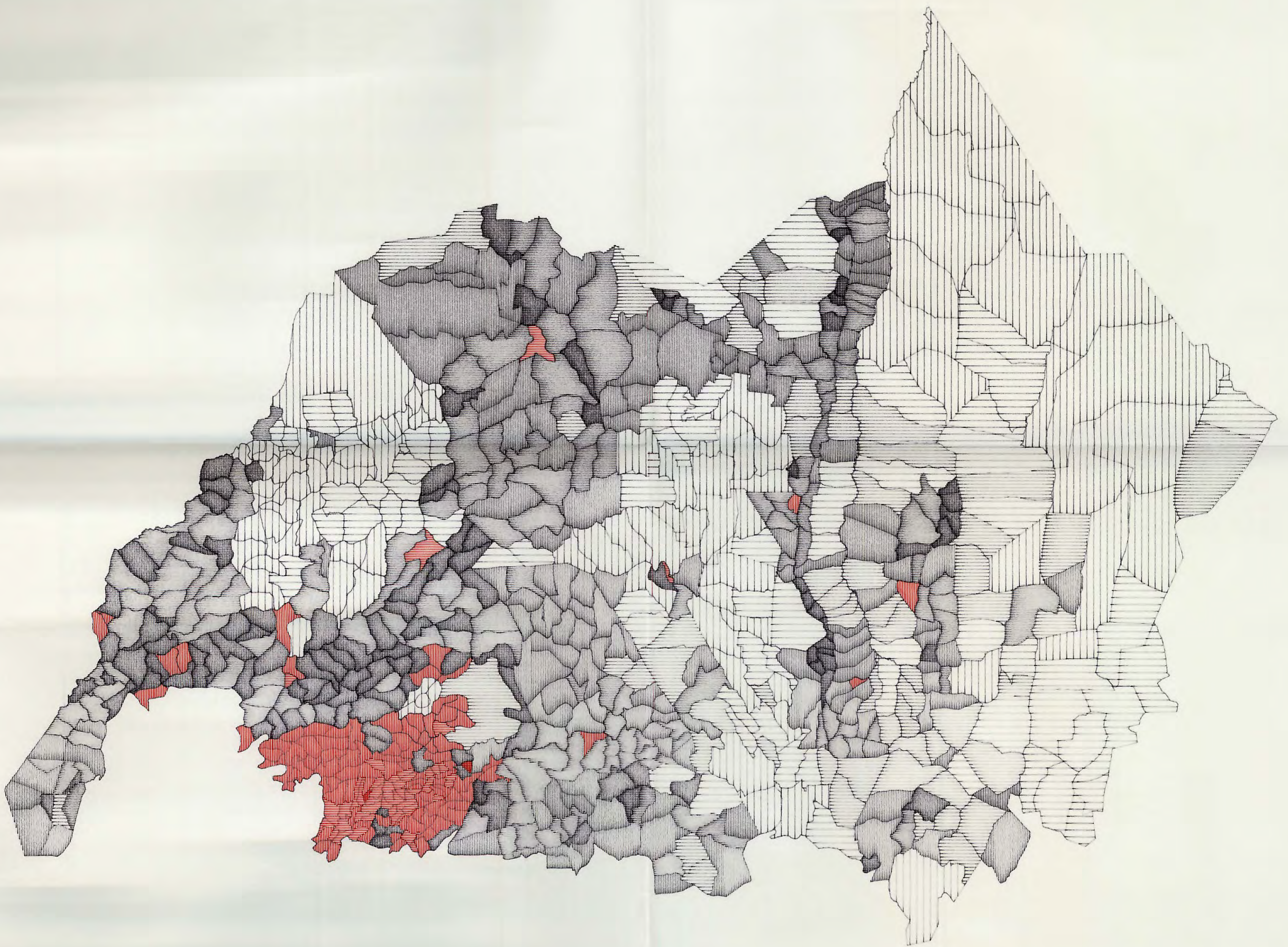


SOURCE: THE 1989 POPULATION CENSUS

The Sub-Location boundary and population information was provided by the Assistant Chiefs during the population census field mapping exercise

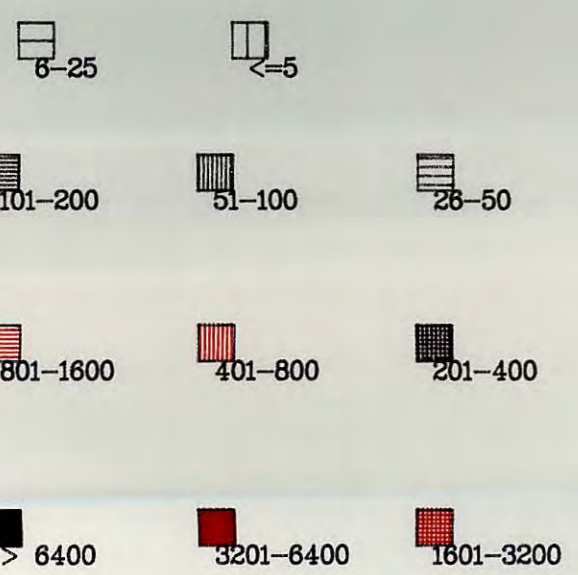
Scale 1:700000

FIGURE 9.17 AREA6 POPULATION DENSITY MAP



K E Y

PERSONS PER SQ.KM

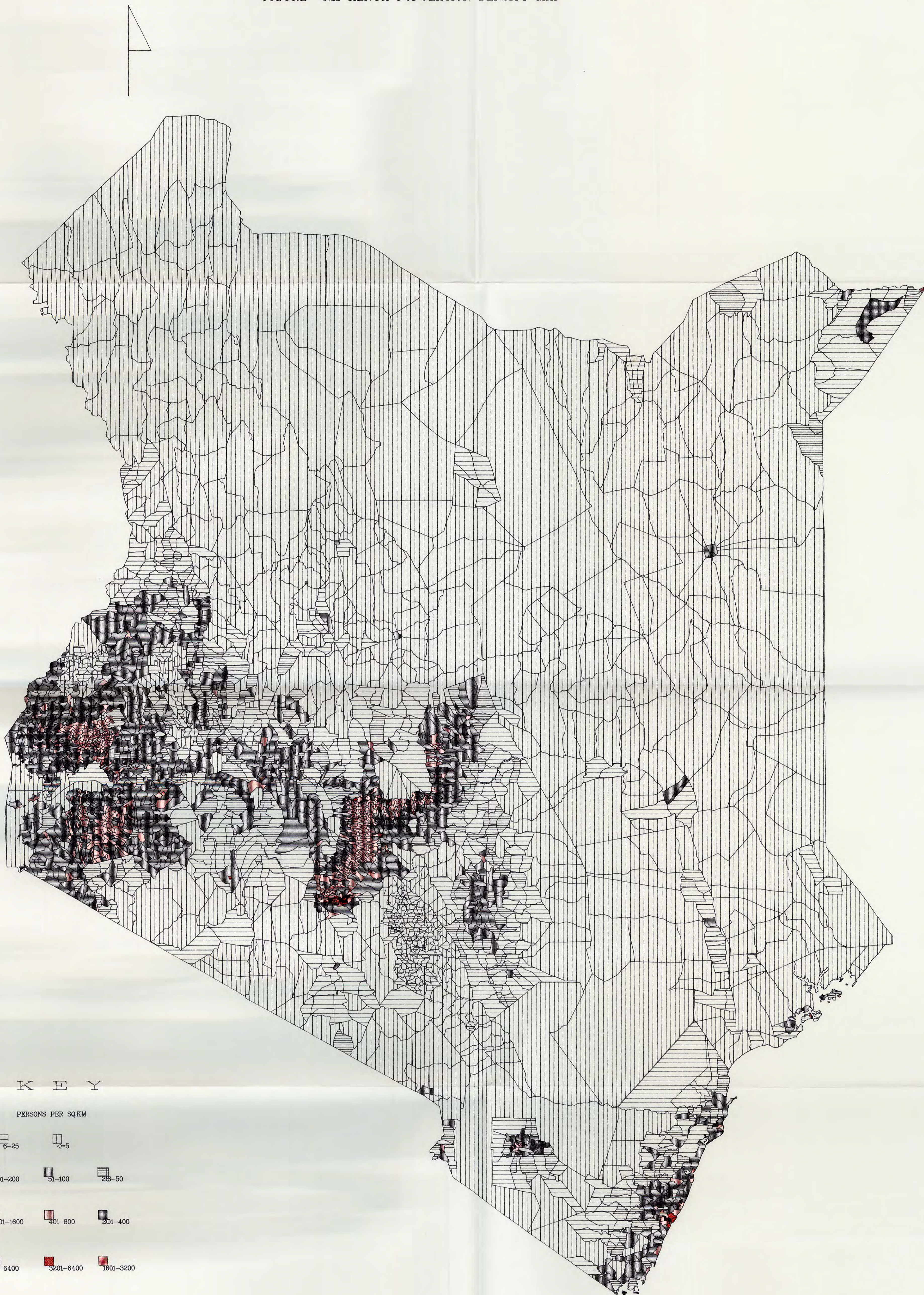


SOURCE: THE 1989 POPULATION CENSUS

The Sub-Location boundary and population information was provided by the Assistant Chiefs during the population census field mapping exercise

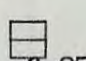
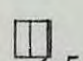









Scale 1:600000

FIGURE 9.11 KENYA POPULATION DENSITY MAP



K E Y

PERSONS PER SQ.KM

- | | | |
|---|---|---|
|  6-25 |  <=5 | |
|  101-200 |  51-100 |  26-50 |
|  801-1600 |  401-800 |  201-400 |
|  > 6400 |  3201-6400 |  1601-3200 |

SOURCE: THE 1989 POPULATION CENSUS
The Sub-Location boundary and population information was provided by
the Assistant Chiefs during the population census field mapping exercise

Scale 1:1700000

FIGURE 98 KENYA SUB-LOCATION BOUNDARIES



The Sub-Location boundary information was obtained from the Assistant Chiefs during the 1989 Kenya population census field mapping exercise

Scale 1:1700000