

## Durham E-Theses

---

### *Detailed studies of mid-ocean ridge volcanism at the Mid-Atlantic Ridge (45N) and elsewhere*

YEO, ISOBEL,ALICE,L

#### How to cite:

---

YEO, ISOBEL,ALICE,L (2012) *Detailed studies of mid-ocean ridge volcanism at the Mid-Atlantic Ridge (45N) and elsewhere*, Durham theses, Durham University. Available at Durham E-Theses Online: <http://etheses.dur.ac.uk/4944/>

#### Use policy

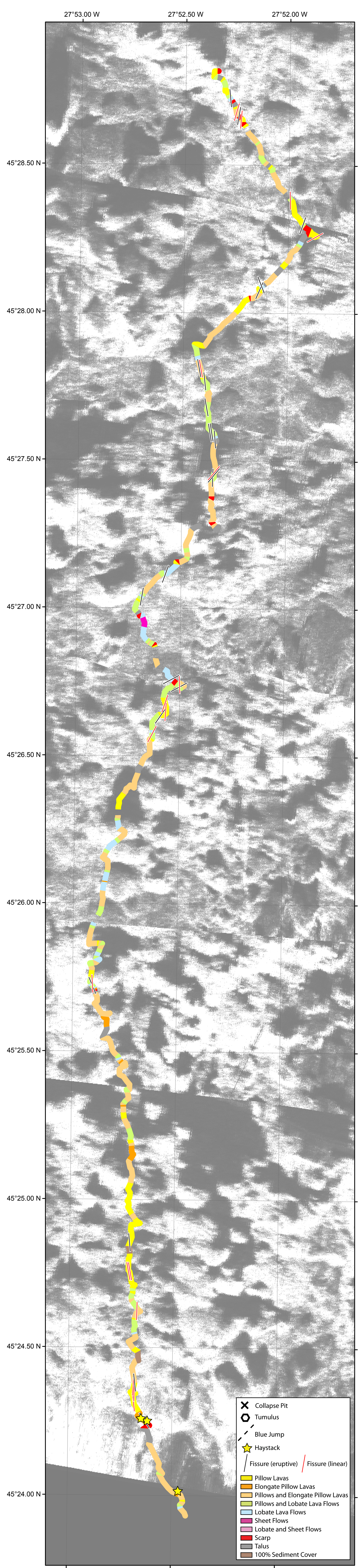
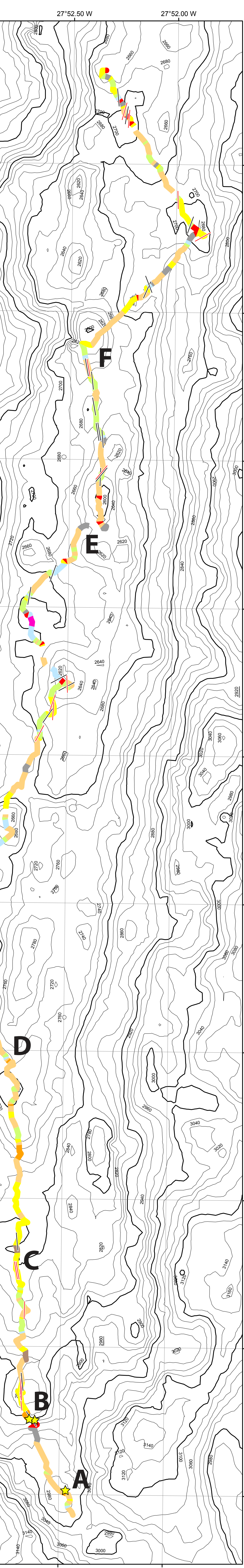
---

The full-text may be used and/or reproduced, and given to third parties in any format or medium, without prior permission or charge, for personal research or study, educational, or not-for-profit purposes provided that:

- a full bibliographic reference is made to the original source
- a [link](#) is made to the metadata record in Durham E-Theses
- the full-text is not changed in any way

The full-text must not be sold in any format or medium without the formal permission of the copyright holders.

Please consult the [full Durham E-Theses policy](#) for further details.



- Collapse Pit
- Tumulus
- Blue Jump
- Haystack
- Fissure (eruptive) / Fissure (linear)
- Pillow Lavas
- Elongate Pillow Lavas
- Pillows and Elongate Pillow Lavas
- Pillows and Lobate Lava Flows
- Lobate Lava Flows
- Sheet Flows
- Lobate and Sheet Flows
- Scarp
- Talus
- 100% Sediment Cover

