

## Durham E-Theses

---

### *The Yōkai Imagination of Symbolism: The Role of Japanese Ghost Imagery in late 19th & early 20th Century European Art Volumes I-III*

ROWE, SAMANTHA,SUE,CHRISTINA

#### How to cite:

---

ROWE, SAMANTHA,SUE,CHRISTINA (2015) *The Yōkai Imagination of Symbolism: The Role of Japanese Ghost Imagery in late 19th & early 20th Century European Art Volumes I-III*, Durham theses, Durham University. Available at Durham E-Theses Online: <http://etheses.dur.ac.uk/11477/>

#### Use policy

---

The full-text may be used and/or reproduced, and given to third parties in any format or medium, without prior permission or charge, for personal research or study, educational, or not-for-profit purposes provided that:

- a full bibliographic reference is made to the original source
- a [link](#) is made to the metadata record in Durham E-Theses
- the full-text is not changed in any way

The full-text must not be sold in any format or medium without the formal permission of the copyright holders.

Please consult the [full Durham E-Theses policy](#) for further details.

**The *Yōkai* Imagination of Symbolism:  
The Role of Japanese Ghost Imagery  
in late 19<sup>th</sup> & early 20<sup>th</sup> Century European Art  
Volumes I-III**

Samantha Sue Christina Rowe

**Volume II: Illustrations**



**MA by Thesis**

**School of Education (History of Art)**

**University of Durham**

**2015**

## Illustrations:

1. *Sara-yashiki, Hyaku Monogatari*,  
Katsushika Hokusai (1760-1849), c. 1830  
woodblock print on paper, (dimensions unknown)  
Image location: London, © Trustees of the British Museum 18
2. *Shunen (Implacable Malevolence), Hyaku Monogatari*  
Katsushika Hokusai (1760-1849), c. 1830  
woodblock print on paper, (dimensions unknown)  
Image location: London, © Trustees of the British Museum 19
- 3a. *Oiwa-san, Hyaku Monogatari*  
Katsushika Hokusai (1760-1849), c. 1830  
woodblock print on paper, (dimensions unknown)  
Image location: London, © Trustees of the British Museum 20
- 3b. *The Spirit of Oiwa*  
Utagawa Kuniyoshi (1797-1868), 1847-1848  
woodblock print on paper, (dimensions unknown)  
Image location: Oxford, © Ashmolean Museum, University of Oxford; this item is from Eastern  
Art Online: Yousef Jameel Centre for Islamic and Asian Art, [jameelcentre.ashmolean.org](http://jameelcentre.ashmolean.org),  
Ashmolean Museum, University of Oxford [EA1971.61] 21
- 4a. Illustration of an *akashita, Hyakkai-zukan (The Illustrated Volume of 100 Demons)*  
Sawaki Suushi (dates unknown), 1737  
emaki (picture scroll), (dimensions unknown)  
Image location: Kyoto, International Research Center for Japanese Studies 22
- 4b. Illustration of a *hyōsube* and a *nure-onna, Hyakkai-zukan (The Illustrated Volume of 100 Demons)*  
Sawaki Suushi (dates unknown), 1737  
emaki (picture scroll), (dimensions unknown)  
Image location: Kyoto, International Research Center for Japanese Studies 23
- 4c. Illustration of a *yamawaro, Hyakkai-zukan (The Illustrated Volume of 100 Demons)*  
Sawaki Suushi (dates unknown), 1737  
emaki (picture scroll), (dimensions unknown)  
Image location: Kyoto, International Research Center for Japanese Studies
- 4d. Illustration of a *kami-kiri, Hyakkai-zukan (The Illustrated Volume of 100 Demons)* 24  
Sawaki Suushi (dates unknown), 1737  
emaki (picture scroll), (dimensions unknown)  
Image location: Kyoto, International Research Center for Japanese Studies
- 4e. Illustration of an *otoroshi, Hyakkai-zukan (The Illustrated Volume of 100 Demons)* 25  
Sawaki Suushi (dates unknown), 1737  
emaki (picture scroll), (dimensions unknown)  
Image location: Kyoto, International Research Center for Japanese Studies 26

4f. Illustration of a <i>rokuro-kubi</i> , <i>Hyakkai-zukan</i> ( <i>The Illustrated Volume of 100 Demons</i> ) As above	27
4g. Illustration of a <i>yama-uba</i> , <i>Hyakkai-zukan</i> ( <i>The Illustrated Volume of 100 Demons</i> ) As above	28
4h. Illustration of a <i>yūrei</i> , <i>Hyakkai-zukan</i> ( <i>The Illustrated Volume of 100 Demons</i> ) As above	29
5a. <i>The Taira Ghosts Attacking Yoshitsune's Ship</i> Utagawa Kuniyoshi (1797-1868), 1843-1845 woodcut on paper, 32.5 x 67.9 cm Image location: Oxford, © Ashmolean Museum, University of Oxford; This item is from Eastern Art Online: Yousef Jameel Centre for Islamic and Asian Art, <a href="http://jameelcentre.ashmolean.org">jameelcentre.ashmolean.org</a> , Ashmolean Museum, University of Oxford [EA1971.161].	30
5b. <i>The Taira Ghosts Attacking Yoshitsune's Ship</i> , (left panel) As above	31
5c. <i>The Taira Ghosts Attacking Yoshitsune's Ship</i> , (middle panel) As above	32
5d. <i>The Taira Ghosts Attacking Yoshitsune's Ship</i> , (right panel) As above	33
6a. <i>Minamoto Raiko and the 'Earth Spider'</i> , (V&A title: <i>The Spider Monster Creating Monsters in the Mansion of Minamoto no Yorimitsu</i> ) Utagawa Kuniyoshi (1797-1861), 1843 woodcut on paper, 34.6 cm x 72.7 cm Image location: London, © Victoria and Albert Museum [E.10535-1886]	34
6b. <i>Minamoto Raiko and the 'Earth Spider'</i> , (V&A title: <i>The Spider Monster Creating Monsters in the Mansion of Minamoto no Yorimitsu</i> ), (left panel) As above	35
6c. <i>Minamoto Raiko and the 'Earth Spider'</i> , (V&A title: <i>The Spider Monster Creating Monsters in the Mansion of Minamoto no Yorimitsu</i> ), (middle panel) As above	36
6d. <i>Minamoto Raiko and the 'Earth Spider'</i> , (V&A title: <i>The Spider Monster Creating Monsters in the Mansion of Minamoto no Yorimitsu</i> ), (right panel) As above	37
7. <i>The Web of Government</i> Ukita Ikkei (1795-1859) Hanging scroll on paper, ink, colour and gold wash, 168 x 58.9 cm Image location: Image location: Hyōgo, Koshimono Kōichi Coll.	38



8. *Inada Kyûzô Shinsuke murders the kitchenmaid suspended from a rope, Eimei nijūhasshūko*  
(*Twenty-eight Famous Murders with Poems*)  
Tsukioka Yoshitoshi (1839-1892), c.1867  
woodblock print on paper, 34.9 x 24.1 cm  
Image location: San Francisco, Fine Arts Museum of San Francisco 39
9. *The Hag of Adachigahara*  
Tsukioka Yoshitoshi (1839-1892), 1885  
38 x 26 cm, ōban  
Image location: Kyoto, International Research Center for Japanese Studies 40
10. *Kohada Koheiji, Hyaku Monogatari*  
Katsushika Hokusai (1760-1849), c. 1830  
woodblock print on paper, (dimensions unknown)  
Image location: London, © Trustees of the British Museum 41
11. *Neue Zeyttung auß der Insel Japonien*  
Michael Manger (1570-1603), 1586  
Image location: London, © Trustees of the British Museum 42
12. *The Scruple*  
William Sharp (1749-1824), 1781  
Image location: London, © Trustees of the British Museum 43
13. *Yorimitsu and the Earth Spider*  
Katsushika Hokusai (1760-1849), c.1818  
(dimensions unknown)  
Image location: Duret, 1900: 194-195; pl. 320 44
14. *Kouaidan hiyak'ki dzuyé (Apparitions of a Hundred Monsters)*  
Katsukawa Shunyei (1762-1819), Woodblock print on paper  
(dimensions unknown)  
Image location: Paris, Bibliothèque Nationale 45
15. *The Temptation of Buddha*  
Katsushika Hokusai (1760-1849)  
published in Gillot, 1880s, pl. 233 again I think there is a link to the publication  
Image location: Gillot, 1880s: pl. 233 46
16. *Apparition of the Courtesan, 1765*  
Ran'ū (dates unknown), 1765  
woodblock print, ink and colour on paper, 28x19.4cm  
Image citation: Formerly Vever Collection, now Freer Gallery of Art and Arthur M. Sackler  
Gallery. 47
17. *Onoe Matsusuke I playing the role of Kohada Koheiji*  
Utagawa Toyokuni (1769-1825), 1808  
Woodblock print on paper, 37x25cm  
Image location: London, © Trustees of the British Museum 48

18. *Okamé: Les Amis de l'art japonais dîneront au restaurant Cardinal*, One of several invitation cards printed for Société des amis de l'art japonais, 1870-1914  
Roche, Pierre (1855-1922), 1908  
(medium and dimensions unknown)  
Image location: Paris, Bibliothèque Nationale de France, département Estampes et photographie [PET FOL-EF-441 (A,5)] 49
19. Front cover of *Le Japon artistique*  
No. 20, December, 1889, No. 30 ,October, 1890  
Siegfried (Samuel) Bing (1838-1905) (editor), 1888-1891  
journal page  
Image location: Digital Library for the Decorative Arts and Material Culture 50
20. Front cover of *Catalogue de l'exposition retrospective de l'art japonais*  
Louis Gonse (editor), 1883  
catalogue page 51
21. Netsuke representing Futen, The Storm Spirit  
(artist unknown), 18th century  
wood with inlays, 8.3 x 2.9 x 2.5 cm  
Image location: Los Angeles County Museum of Art 52
22. *Okabe Metamorphosed into a Cat*  
Utagawa Kunisada , 1835  
woodcut print on paper, 36.7 x 77.4 cm  
An imprint of this work is in Monet's collection of Japanese prints at Giverny. 53
23. *Amaterasu coming out of the cave*  
Gyokuei, late 19<sup>th</sup> century  
98 x 2.3 cm - the Van Gogh catalogue of Japanese prints cites the size of this as 980x23 mm however do you think that is a mistake, surely it should be 980x230or 98x23 as it is described as a 'small kakemono'  
Image location: van Rappard-Boon et al., 2006: 68, pl. 22 54
24. *Okabe, Tōkaidō gojusan-tsui (Fifty-three pairings along the Tōkaidō Road)*  
Utagawa Kuniyoshi (1797-1861), 1843-1845  
Woodcut print on paper, 36.1 x 25.6 cm  
Image location: London, © The Trustees of the British Museum 55
25. *Onoe Baikō as a female ghost holding a baby / Ghost of the Swamp*  
Utagawa Kunisada, c. 1830  
ōban; nishiki-e, 38.1 x 26.4 cm  
Image location: Amsterdam, Van Gogh Museum 56
26. *Kuwana, Tōkaidō gojusan-tsui (Fifty-three pairings along the Tōkaidō Road)*  
Utagawa Kuniyoshi (1797-1861), 1843-1845  
Woodcut on paper, 37.3 x 25.2 cm  
Image location: London, © The Trustees of the British Museum 57

27. <i>Nakamura Shikan II as Tadanobu</i> Shunbaisai Hokuei (d. 1837), 1835 Image location: London, © Victoria and Albert Museum [E.5016-1886]	58
28a. <i>The Rescue of Minamoto no Tametomo by Goblins</i> Utagawa Kuniyoshi (1797-1861), c.1851 Image location: London, © Victoria and Albert Museum [E.10605-1886]	59
28b. <i>The Rescue of Minamoto no Tametomo by Goblins</i> , (left panel) As above	60
28c. <i>The Rescue of Minamoto no Tametomo by Goblins</i> , (middle panel) As above	61
28d. <i>The Rescue of Minamoto no Tametomo by Goblins</i> , (right panel) As above	62
29a. <i>The Giant Octopus and Others; Newly Published Quick Changes: Two-faced Monsters</i> Utagawa Sadahide, 1830-1844 Ink and colour on paper, (dimensions unknown) Image location: London, © Victoria and Albert Museum, London [E.2198-1909]	63
29b. <i>Mouse Monster and Others; Newly Published Quick Changes: Two-faced Monsters</i> As above	64
Plate 29c. <i>Fox-Genkurô and Others; Newly Published Quick Changes: Two-faced Monsters</i> As above	65
29d. <i>The Monster of Good and Evil and Others; Newly Published Quick Changes: Two-faced Monsters</i> As above	66
29e. <i>Mendicant Monk in Katsushika and Others; Newly Published Quick Changes: Two-faced Monsters</i> As above	67
30. <i>Catalogue of the Valuable Collection of Japanese Colour Prints, The Property of John Stewart Happer, Esq.</i> Sotheby, Wilkinson & Hodge, 1909 catalogue entry Image location: courtesy of Brian Page Antiques	68
31. Vase Edward William Godwin (1833-1886); William Watt, c. 1877 Slipware, 20.7 x 19 cm Image location: London, Victoria & Albert Museum [C.2-2008]	69
32 a-f. Illustrations for <i>Bon-Mots of Sydney Smith and R. Brinsley Sheridan</i> Aubrey Vincent Beardsley (1872-1898), 1893	70

- 32g. *J'ai baisé ta bouche Iokanaan*, Design for 'The Climax' for Oscar Wilde's 'Salome'  
Aubrey Vincent Beardsley (1872-1898), 1893  
line block print, 22.8 x 12.7 cm  
Image location: a-f. Jerrold, 1893: 40; 133; 179; 51; 79; 92; g. London, © Victoria and Albert Museum [E.456-1899] 70
33. Illustration accompanying *The Tongue Cut Sparrow, Tales of Old Japan*  
(details unknown)  
Image location: Mitford, 1871: 250 71
34. Illustration of a *rokuro-kubi*, *Hokusai Manga* (Vol. unknown)  
Katsushika Hokusai (1760-1849),  
woodcut on paper  
Image location: Bouquillard & Marquet, 2007: 132-133, pl. 2 72
35. *Witches' Sabbath*  
Hans Baldung, called 'Grien', 1510  
Woodcut, 37.5 x 25.4 cm  
Image location: London, © Trustees of the British Museum 73
36. *The Temptation of Saint Anthony, Isenheim Altarpiece*, (detail)  
Matthias Grünewald (c. 1475–80-1528), c.1512-1516  
oil on panel, (dimensions unknown)  
Image location: Colmar france, Musée Unterlinden 74
37. *The Ghost of a Flea*  
William Blake 1757–1827, c.1819–20  
tempera and gold on mahogany, 21.4 x 16.2 cm  
Image location: London, Tate Britain [N05889] 75
38. Illustrations of *Oni, Japanese scroll*  
(artist unknown),  
emaki, (date and dimensions unknown)  
Image location: Kyoto, International Research Center for Japanese Studies 76
39. *The Nightmare*  
Henry Fuseli (1741-1825), 1781  
oil on canvas, 101.6 x 126.7 cm  
Image location: Detroit, Detroit Institute of Arts [55.5.] 77
40. *The Blue Bower*  
Dante Gabriel Rossetti (1828-1882), 1865  
oil on canvas, 84 x 70.9 cm  
Image location: Bridgemanart.com 78
41. *Caprice in Purple and Gold: The Golden Screen*  
James Abbott McNeil Whistler (1834-1903), 1864  
oil on wood panel, 50.1 x 68.5 cm  
Image location: Freer Gallery of Art and Arthur M. Sackler Gallery [F1904.75a] 79

42. *Still-life with Vase with Japanese Samurai Warrior*  
Odilon Redon (1840-1916), c. 1905  
pastel on paper, 228.6 x 184.2 cm  
Image location: Oslo, Galleri K 80
43. *The Marsh Flower, A Sad Human Head, No. 2, Homage to Goya*  
Odilon Redon (1840-1916), 1885  
lithograph on paper, 27.3 x 20.4 cm  
Image location: New York, Museum of Modern Art 81
44. *Then There Appears a Singular Being, with the Head of a Man and the Body of a Fish, No. 5, The Temptation of St. Anthony*  
Odilon Redon (1840-1916), 1888  
lithograph in black on ivory China paper, laid down on ivory wove paper (chine collé),  
27.6 x 17.1 cm  
Image location: Art institut of Chicago, The Stickney Collection [1920.1637] 82
45. Japanese illustration of a *ningyo* (mermaid demon)  
(artist unknown),  
late Edo period, (medium and dimensions unknown)  
Image location: Collection of Jan Cock Blomhoff 1817-1824; now Leiden: National Museum of  
Ethnography (Museum Volkenkunde). 83
46. Postcard of a *ningyo* 'mummy'  
(artist unknown), late 19th century  
postcard  
Image location: Ostend, Musée Stracké. 84
47. *Japanese ningyo 'mummy'*  
(artist unknown)  
late Edo period, fish and animal parts held together with string and paper  
Image location: Collection of Jan Cock Blomhoff 1817-1824; now Leiden: National Museum of  
Ethnography (Museum Volkenkunde). 85
48. *Woman wearing a toque and a mermaid's tail*  
Odilon Redon (1840-1916), 1898  
lithograph on paper, 23.7 x 22.9 cm  
Image location: New York, Museum of Modern Art. 86
49. *Skiapod*  
Odilon Redon (1840-1916), 1892  
etching and drypoint, 20.1 x 14.9 cm  
Image location: Paris, Bibliothèque Nationale 87
50. *A Death's Head crowned with Roses*  
*No. 6, The Temptation of St. Anthony, first serie*  
Odilon Redon (1840-1916), 1888  
Lithograph, 29.7 x 21.4 cm  
Image location: New York, Museum of Modern Art [126.1956.6] 88

51. *Cat Fish (Namazu-e)*  
(artist unknown), 1855  
woodblock print on paper, (dimensions unknown)  
Image location: Kyoto, International Research Centre for Japanese Studies 89
52. *And the eyes without heads were floating like molluscs, No. 13, The Temptation of St. Anthony, third series*  
Odilon Redon (1840-1916), 1896  
Lithograph, 32 x 22.4 cm  
Image location: Cambridge, Fitzwilliam Museum 90
53. *Araignée (Spider)*  
Odilon Redon (1840-1916), 1887  
lithograph, 27.8 x 21.6 cm  
Image location: London, © The Trustees of the British Museum [1888,0619.153] 91
54. *La Bataille de os (The Battle of the Bones)*  
Odilon Redon (1840-1916), 1881  
charcoal drawing, 44.7 x 37.3 cm 92
55. *Frolicking Skeletons, (detail)*  
Kawanabe Kyōsai, 1870s-1880s  
hanging scroll, ink on silk, (dimensions unknown)  
Image location: a. Otterlo, Kröller-Müller Museum; b. Richard Harris Collection 92
56. *Hantise (Obsession)*  
Odilon Redon (1840-1916), 1894  
Lithograph, 36.1 x 22.9 cm  
Image location: Washington, DC, National Gallery of Art [1951.10.456]  
93
57. *Onoe Kikugorō III as the ghost of Oiwa in Irohagana Yotsuya Kaidan*  
Utagawa Kuniyoshi (1797-1861), 1833  
woodblock print on paper, 24.8 x 37.5 cm  
Image location: Lyon Collection [<http://www.woodblockprints.org/>] 93
58. Illustration of a *yūrei*, Hokusai *Manga* Vol. 13: 59  
Katsushika Hokusai (1760-1849), 1849  
woodcut on paper, 15.9 x 22.5 cm  
Paris, Bibliothèque Nationale, Department of Prints & Photography 94
59. *Blossoming (Écllosion), No. 1, Dans le rêve (In the Dream)*  
Odilon Redon (1840-1916), 1879  
lithograph on paper, 32.8 x 25.7 cm  
Image location: New York, The Museum of Modern Art 94
60. *Le Polype difforme flottait sur les rivages, sorte de cyclope souriant et hideux (The deformed polyp floated on the shores, a sort of smiling and hideous Cyclops), No. 3, Les Origines (The Origins)*  
Odilon Redon (1840-1916), 1883  
Lithograph, 21.3 x 20 cm  
Image location: Washington, DC, National Gallery of Art [1951.10.460] 95

- 61a. Illustration of a *hitosume-nyūdō*, *Hyakkai-zukan* (*The Illustrated Volume of 100 Demons*)  
Sawaki Suushi, 1737  
emaki (picture scroll), (dimensions unknown)  
Image location: Kyoto, International Research Center for Japanese Studies 96
- 61b. *Kaseneno bobokon* (*Pussy Demon of Kasane*), *Kaidan hyakki yagyō* (*Ghost Stories: The Night Parade of One Hundred Demons*)  
Utagawa Kuniyoshi (1797-1861), 1836  
woodcut on paper, 13 x 9 cm  
Image location: Kuniyoshi Project 97
62. *After Reading a story by Edgar Poe / The Eye*  
Odilon Redon (1840-1916), 1883  
charcoal on paper, 40.2 x 33.3 cm  
Image location: Santa Barbara, Santa Barbara Museum of Art 98
63. *L'Oeuf* (*The Egg*)  
Odilon Redon (1840-1916), 1885  
Lithograph, 29.3 x 22.5 cm  
Image location: London, © Trustees of the British Museum [1949,0411.3488] 99
- 64a. *Sagifuchi ni Ippon'ashi*, detail of square seventeen from *Mukashi banashi Bakemono Sugoroku* (*Old Monster Yarns Backgammon*)  
Utagawa Yoshikazu, 1858  
woodcut printed board game, ink and color on paper, 52 x 81.3 cm  
Image location: Oregon, USA, Jordan Schnitzer Museum of Art [1969:37.92] 100
- 64b. *Kasa Ippon-ashi* (*One Legged Umbrella Demon*)  
Gosotei Hirosada (c. 1810-1864), 1855  
Chūban  
Image location: Private Collection. Formerly: Somerset, UK, Toshidama Gallery 100
65. Cactus Man  
Odilon Redon (1840-1916), 1881  
Charcoal, 49.5 x 37.5 cm  
Image location: USA, The Ian Woodner Family Collection 101
66. *Neko no ateji* (*Cat Homophones*)  
Utagawa Kuniyoshi (1797-1861), 1842  
woodblock print on paper, 36 x 25 cm  
Image location: Kuniyoshi Project 102
67. *Different peoples inhabit the countries of the ocean, La Tentation de Saint-Antoine, Paris*  
Odilon Redon (1840-), 30.8 x 23 cm  
Image location: Cambridge, Fitzwilliam Museum 103

68. <i>The Little One Is Dreaming, Étude</i> , (study) Paul Gauguin (1848–1903), 1881 oil on canvas, 60 x 74 cm Image location: Copenhagen, Ordrupgaard	104
69. <i>The Yellow Christ</i> Paul Gauguin (1848-1903), 1889 oil on canvas, 92.1 x 73.3 cm Image location: New York, Albright-Knox Art Gallery	105
70. <i>Christ from the Trémalo chapel, Pont Aven</i> (artist unknown), painted wood carving, (date and dimensions unknown) Location: Pont Aven, Trémalo chapel	105
71. <i>Soyez mystérieuses (Be Mysterious)</i> Paul Gauguin (1848-1903), 1890 bas-relief, oil on wood, 73 x 95 cm Image location: Paris, Musée d'Orsay [RF 3405]	106
72. <i>Still Life with Horse's Head</i> Paul Gauguin (1848-1903), 1886 oil on canvas, 49 x 38.5 cm Image location: Tokyo, Bridgestone Museum of Art, Ishibashi Foundation	107
73. <i>Nature morte à l'estampe japonaise (Still Life with Japanese Print)</i> Paul Gauguin (1848-1903) , 1888 oil on canvas , 31.7 x 55.5 cm Image location: New York, Christie's Impresionist and Modern Art (Evening Sale), 7 <sup>th</sup> May 2003	108
74. <i>Nature morte à l'estampe japonaise (Still Life with Japanese Print)</i> Paul Gauguin (1848–1903), 1889 oil on canvas, 72.4 x 93.7 cm Image location: Tehran, Museum of Contemporary Art	109
75. <i>Ichikawa Kodanji playing the Hunter Nagohe</i> Utagawa Yoshiiku (1833-1904), 1864 woodblock print on paper, (dimensions unknown) Image location: Frome, Toshidama Gallery	110
76. <i>The Schuffenecker Family / Schuffenecker's Studio</i> Paul Gauguin (1848-1903), 1889 oil on canvas, 73 x 92 cm Image location: Paris, Musée d'Orsay [RF 1959 8]	111



77. *Vision After the Sermon: Jacob Wrestling with the Angel*  
 Paul Gauguin (1848-1903), 1888  
 oil on canvas, 74.4 x 93.1 cm  
 Image location: Edinburgh, National Galleries of Scotland 112
78. *Hodogaya, Totsuka, Fujisawa and Hiratsuka, Tokaido gojisan-eki yon shuku meisho (Fifty-three Stations of the Tōkaidō Road)*  
 Utagawa Kuniyoshi (1797-1861), c. 1835  
 ōban yoko-e, 25.5 x 37.2 cm  
 Image location: London, © Trustees of the British Museum [2008,3037.03304] 113
79. *Still Life with Onions, Beetroot and a Japanese Print*  
 Paul Gauguin (1848-1903), 1889  
 oil on canvas. 40.6 x 52.1 cm  
 Image location: Private collection 114
80. *Warai Hannyā, Hyaku Monogatari*  
 Katsushika Hokusai (1760-1849), c. 1830  
 woodblock print on paper, (dimensions unknown)  
 Image location: London, © Trustees of the British Museum [1921,0511,0.14] 115
81. *Self-Portrait*  
 Paul Gauguin (1848-1903), 1889  
 oil on wood, 79.2 x 51.3 cm  
 Image location: Washington DC, The National Gallery of Art 116
82. *Soyez amoureuses vous serez heureuses (Be In Love and You Will Be Happy)*  
 Paul Gauguin (1848-1903), 1889  
 carved and painted linden wood, 95 x 72 x 6.4 cm  
 Image location: Boston, Museum of Fine Arts Boston [57.582] 117
- 83a. *Soyez mystérieuses (Be Mysterious) , (House of Pleasure)*, (bottom left panel)  
 Paul Gauguin (1848-1903), 1901-1902  
 bas-relief, polychromed sequoia wood  
 32 x 153 x 3 cm  
 Image location: Paris, Musée d'Orsay [RF 4290] 118
- 83b. *Soyez mystérieuses (Be Mysterious) , (House of Pleasure)*, (bottom left panel)  
 as above 118
84. *Head of a Young Girl*, 1893-1894  
 Clay, varnished and heightened in places with dark red pigment, 15.2 x 26 x 18 cm  
 Image location: Carmen Thyssen-Bornemisza Collection on deposit at Madrid, Museo Thyssen-Bornemisza [CTB.DEC99.36] 119

85. *The Loss of Virginity*  
 Paul Gauguin (1848–1903), 1890-1891  
 oil on canvas, 90.2 x 130.2 cm  
 Image location: Norfolk (VA), Chrysler Museum of Art [71.510] 120
86. *The actor Nakamura Shikan as Minamoto (no) Kurō Kitsune*  
 Kinusada, 1867  
 ōban nishiki-e, 37.2 x 25.3 cm  
 Image location: van Rappard-Boon, van Gulik & van Bremen-Ito, 2006: 227, pl. 315 121
87. *Kusunoha-gitsune doji ni wakaruru no zu (The Fox-Woman Kusunoha Leaving Her Child), Shinkei sanjurokkaisen (New forms of thirty-six ghosts)*  
 Tsukioka Yoshitoshi (1839-1892), 1890  
 woodblock print on paper , 36.9 x 25.1 cm  
 Image location: Claremont, California, Ruth Chandler Williamson Gallery, Scripps College [93.3.41] 122
88. *Princess Yaegaki*  
 Utagawa Kuniyoshi (1797–1861), 19th century  
 woodblock print on paper, 36.8 x 25.4 cm  
 Image location: New York, Metropolitan Museum of Art 123
89. *Otome (Maiden), Waken nazorae Genji (Japanese and Chinese Comparisons for the Chapters of the Genji)*  
 Utagawa Kuniyoshi (1797-1861), 1855  
 ōban tate-e, 36.9 x 25.9 cm  
 Image location: London, © Trustees of the British Museum [2008,3037.06303] 124
- 90a. *Tahitian Woman with Evil Spirit, (recto)*  
 Paul Gauguin (1848-1903), c. 1900  
 oil transfer drawing, (dimensions unknown);  
*Tahitian Woman with Evil Spirit, (verso)*  
 Paul Gauguin (1848-1903), c. 1900  
 graphite and colored pencil, (dimensions unknown)  
 Image location: New York, The Museum of Modern Art 125
- 90b. *Head with Horns*  
 Paul Gauguin (1848-1903), 1895–97  
 wood with traces of paint, (dimensions unknown);  
*Tongan Young Woman Living in Fiji*  
 (photographer unknown), c. 1900  
 Photograph, (dimensions unknown)  
 Image location: New York, The Museum of Modern Art; Los Angeles, The J. Paul Getty Museum; London, The British Museum 125

91. *Sadanobu-ko yoru kyuchu ni kai o osoreshimu no zu (Sadanobu Threatening a Demon in the Palace at Night)*, *Shinkei sanjurokkaisen (New forms of thirty-six ghosts)*  
Tsukioka Yoshitoshi (1839-1892), 1889  
woodblock print on paper, 36.8 x 25.2 cm  
Image location: Indiana, Indianapolis Museum of Art 126
92. *Spectres (Ghosts)* [Musée du Louvre title], *Noa Noa* (sketchbook)  
Paul Gauguin (1848-1903), c. 1890s  
page from a sketchbook  
Image location: Paris, Département des Arts graphiques, Musée du Louvre [RF 7259, 60] 127
- 93a. *Notes manuscrites (Handwritten notes)* [Musée du Louvre title], *Noa Noa* (sketchbook)  
Paul Gauguin (1848-1903)  
c. 1890s  
pages from a sketchbook  
Image location: Paris, Département des Arts graphiques, Musée du Louvre [RF 7259, 230; RF 7259.71] 128
- 93b. *Personnage japonais (Japanese character)* [Musée du Louvre title], *Noa Noa* (sketchbook)  
as above 128
- 94a. *Notes manuscrites et copies d'après Delacroix (Handwritten notes and copies after Delacroix)*  
[Musée du Louvre title], *Noa Noa* (sketchbook)  
Paul Gauguin (1848-1903), c. 1890s  
page from a sketchbook  
Image location: Paris, Département des Arts graphiques, Musée du Louvre [RF 7259, 235] 129
- 94b. *Fujiwara no Sanekata and Sparrows, Manga*  
Katsushika Hokusai (1760-1849), 1815-1865  
20.3 x 14 cm, woodcut on paper  
Image location: New York, Ronin Gallery 129
- 95a. *Noa Noa*  
Paul Gauguin (1848-1903), c. 1890s  
front cover from a sketchbook  
Image location: Paris, Département des Arts graphiques, Musée du Louvre [RF 7259, 1] 130
- 95b. *Nanso Satomi hakken den*  
Kyokutei Bakin, Yanagawa Shigenobu, et al., 1814 to 1841  
front cover, 22.8 x 16 cm  
Image location Japan, National Diet Library 130
96. Portrait of Jacob Meyer de Haan  
Paul Gauguin (1848-1903), 1889  
oil on wood, 79.6 x 51.7 cm  
Image location: New York, Museum of Modern Art 131

97. *Oviri*, (front & back)  
 Paul Gauguin (1848-1903), c. 1894  
 Medium: Stoneware, 75 x 19 x 27 cm  
 Image location: Paris, © RMN-Grand Palais (Musée d'Orsay) 132
98. *Manao Tupapau (The Spirit of the Dead Watches)*  
 Paul Gauguin (1848 - 1903), 1892  
 oil on canvas, 73 x 92 cm  
 Image location: New York, Albright-Knox Art Gallery 133
99. Poster for Bing Exhibition in London (1889)  
 Frank Brangwyn (1867-1956), 1899 (printed)  
 colour lithograph on paper, (dimensions unknown)  
 Image location: London, Victoria & Albert Museum [E.450-1965] 134
100. Belt buckle, with lily pads and blossom  
 Henri Vever, gold, enamel and diamond  
 c.1900, (dimensions unknown)  
 Image location: Boston, Museum of Fine Arts Boston 135
- 101a. *Assyrienne* (comb)  
 Henri and Paul Vever; Eugène Grasset (1845-1917), c.1900  
 carved tortoiseshell, gold, enamel and sapphires, (dimensions unknown) 136
- 101b. *Apparitions* (brooch)  
 Henri and Paul Vever; Eugène Grasset (1845-1917), 1900  
 Repoussé gold; translucent and opaque cloisonné enamel; ivory; topaz cabochons, 6.2x3.9x1.3 cm  
 Image location: Paris, © RMN-Grand Palais (Musée d'Orsay) 136
102. *Un Autre Monde*, (frontispiece)  
 J. J. Grandville (1803-1847), 1843-1844  
 Image location: Paris, Bibliothèque Nationale 137
103. *Vase La Carpe*  
 Émile Gallé (1846-1904), 1878  
 Glass, (dimensions unknown)  
 Image location: Paris, © Les Arts Décoratifs [A 86] 138
104. *Saito Oniwakamaru, "Young Devil Child" (Benkei) fighting the giant carp in the waterfall of Bishamon ga taki, Ikkai zuihitsu (Essays by Yoshitoshi)*  
 Tsukioka Yoshitoshi (1839-1892), c.1872  
 woodblock print on paper, dimensions unknown  
 Image location: Ann Arbor, MI, Fuji Arts 139
105. *Gyoran Kannon*  
 Katsushika Hokusai (1760-1849), 1849  
 ink and paper, 63.5 x 36.2 cm  
 Image location: London, © Trustees of the British Museum [1937,0710,0.296] 140

106. *Carp Vase*  
Eugène Rousseau (1827-1891), 1878-1884  
layered and engraved glass, (dimensions unknown)  
Image location: Baltimore, The Walters Art Museum [47.384] 141
107. *Les Hommes Noirs (The Dark Men)*  
Émile Gallé (1846-1904) & Victor Prouvé (1858-1943), c.1900  
blown and cased glass, cut, acid-etched, engraved, polished, applied silver stain, 38.1 x 32.1 cm  
Image location: Corning, The Corning Museum of Glass [2011.3.1] 142
108. *Gaki Zoshi (Stories of Hungry Ghosts)*  
(artist unknown), 12<sup>th</sup> century  
emaki, 26.8 x 138.4 cm  
Image location: Kyoto, Kyoto National Museum [AK229] 143
- 109a. *Gaki Zoshi (Stories of Hungry Ghosts)*, (detail)  
(artist unknown), 12<sup>th</sup> century  
Emaki, 26.8 x 138.4 cm  
Image location: Corning, The Corning Museum of Glass [2011.3.1] 144
- 109b. *Les Hommes Noirs (The Dark Men)*  
(detail), Émile Gallé (1846-1904) & Victor Prouvé (1858-1943), c.1900  
blown and cased glass, cut, acid-etched, engraved, polished, applied silver stain, 38.1 x 32.1 cm  
Image location: Kyoto, Kyoto National Museum [AK229] 144
- 110a. *Vase with face*  
Pierre-Adrien Dalpayrat (1844-1910), Alphonse Voisin-Delacroix (1857-1893) (maker), 1892-93  
stoneware, 64.8 x 42.9 x 40.6 cm  
Image location: New York, The Metropolitan Museum of Art 145
- 110b. *The Opera of the Sea*  
Margaret Macdonald Mackintosh (1864-1933), c. 1902  
inlaid gesso panel  
Image location: London, © The Fine Art Society [FAS71068] 145
- 110c. *The Opera of the Sea*  
Margaret Macdonald Mackintosh (1864-1933), c. 1910  
oil and tempera on sized paper, 144 x 160 cm  
Image location: New York, Museum of Modern Art [SC510.1953] 145
111. *O Grave, where is thy Victory?*  
Jan Theodore Toorop (1858 - 1928), 1892  
drawing, 60.4 x 75.3 cm  
Image location: Otterlo, Rijksmuseum Kroller-Muller [Image URL: RP-T-1960-243] 146
112. *The Three Fiancées*  
Jan Theodore Toorop (1858 - 1928), 1893  
drawing on paper, 78 x 98 cm  
Image location: Otterlo, Kröller-Müller Museum 147

113. <i>Fatality</i> Jan Theodore Toorop (1858-1928), 1893 chalk and pencil on paper, 60 x 75 cm Image location: Otterlo, Rijksmuseum Kroller-Muller [JHG179920]	148
114. <i>Shipwreck</i> Jan Theodore Toorop (1858-1928), 1895 ink and coloured chalk on paper, 17.2 x 28.5 cm Image location: Private Collection	149
115. <i>Satan's Treasures</i> Jean Delville (1867-1953), 1895 oil on canvas, 338 x 368 cm Image location: Brussels, Musées Royaux des Beaux Arts Belgium	150
116. <i>The Dream of the Fisherman's Wife</i> Katsushika Hokusai (1760-1849), c. 1814 woodcut print on paper, Image location: a. Brussels, Musées Royaux des Beaux Arts Belgium	150
117. <i>Still life with Chinoiseries</i> James Ensor, 1907 oil on canvas, 61.5 x 75.2 cm Image location: Deurie, Belgium, Museum Dhondt-Dhaenens	151
118. <i>My Aunt Asleep Dreaming of Monsters</i> James Ensor (1860-1949), c. 1890. pencil, conté crayon & coloured pencil on paper, 21.9 x 30 cm Image location: Brussels, Royal Museum of Fine Arts	152
119a. <i>The Haunted Furniture</i> James Ensor (1860-1949), 1888 etching, 12.4 x 17 cm Image location: Antwerpen, Museum Plantin-Moretus, Print Room [PK.MP.01225]	153
119b. <i>The Haunted Fireplace</i> James Ensor (1860-1949), 1888 crayon and coloured pencil on panel , 24 x 16 cm Image location: Private collection; previously exhibited: New York, Museum of Modern Art	153
120. <i>Squelette regardant les chinoiseries (Skeleton Looking at Chinoiseries)</i> James Ensor (1860-1949), 1885 oil on canvas, 61 x 101 cm Image location: Museum: Ghent, Museum of Fine Arts Ghent [1995-A]	154
121a. <i>Chinoiserie een, oude vrouw (Chinoiserie an old woman)</i> James Ensor (1860-1949), c.1896 tekening (drawing), 17.5 x 22.3 cm Image location: Canberra, National Gallery of Australia [NGA 96.612]	155

121b. <i>Kiyohime Hidaka-gawa ni jitai to naru zu (Kiyome Changing into a Serpent at Hidaka River), Shinkei sanjurokkaisen (New forms of thirty-six ghosts)</i> Tsukioka Yoshitoshi (1839-1892), 1890 woodblock print on paper, 36 x 24.6 cm Image location: Antwerp, Museum: Royal Museum of Fine Arts Antwerp [2710/9]	155
122. <i>Chinoiserie, een demon (Chinoiserie, a demon)</i> James Ensor (1860-1949), 1885 tekening (drawing), 17.3 x 22.3 cm Image location: Antwerp, Royal Museum of Fine Arts Antwerp [2710/4]	156
123a. <i>Mirror with Skeleton</i> James Ensor (1860-1949), 1890 (details unknown) Image location: Stevenson, 1983: 15	156
123b. <i>Jigoku-dayu's reflection</i> Yoshitoshi, 1882 woodblock print on paper, (dimensions unknown)	156
124. <i>Pierrot and Skeleton in a Yellow Robe</i> James Ensor (1860-1949), 1893 schilderij (painting), 48 x 38 cm Image location: Ghent, Museum of Fine Arts Ghent [2007-B]	157
125a. <i>Oni masks</i> From the collection of Gillot (details unknown)	159
125b. <i>Masks from the East of James Ensor</i> James Ensor (1860-1949) (details unknown) Image location: The Hague, Gemeente Museum	159
126. <i>The Sirens</i> Gustave Klimt (1862-1918), 1889 oil on canvas, 82 x 52cm Image location: Vienna, Zentralsparkasse	160
127. <i>The Scream of Nature</i> Edvard Munch, 1893 oil, tempera & crayon on cardboard, 91 x 73.5 cm Image location: Oslo, National Gallery	161

Plate 1.  
*Sara-yashiki,*  
*Hyaku Monogatari*

Katsushika Hokusai (1760-1849)

c. 1830

woodblock print on paper

(dimensions unknown)



Image location: London, © Trustees of the British Museum



Plate 2.  
*Shunen (Implacable Malevolence),*  
*Hyaku Monogatari*

Katsushika Hokusai (1760-1849)  
c. 1830  
woodblock print on paper  
(dimensions unknown)



Image location: London, © Trustees of the British Museum

Plate 3a.  
*Oiwa-san,*  
*Hyaku Monogatari*

Katsushika Hokusai (1760-1849)  
c. 1830  
woodblock print on paper  
(dimensions unknown)

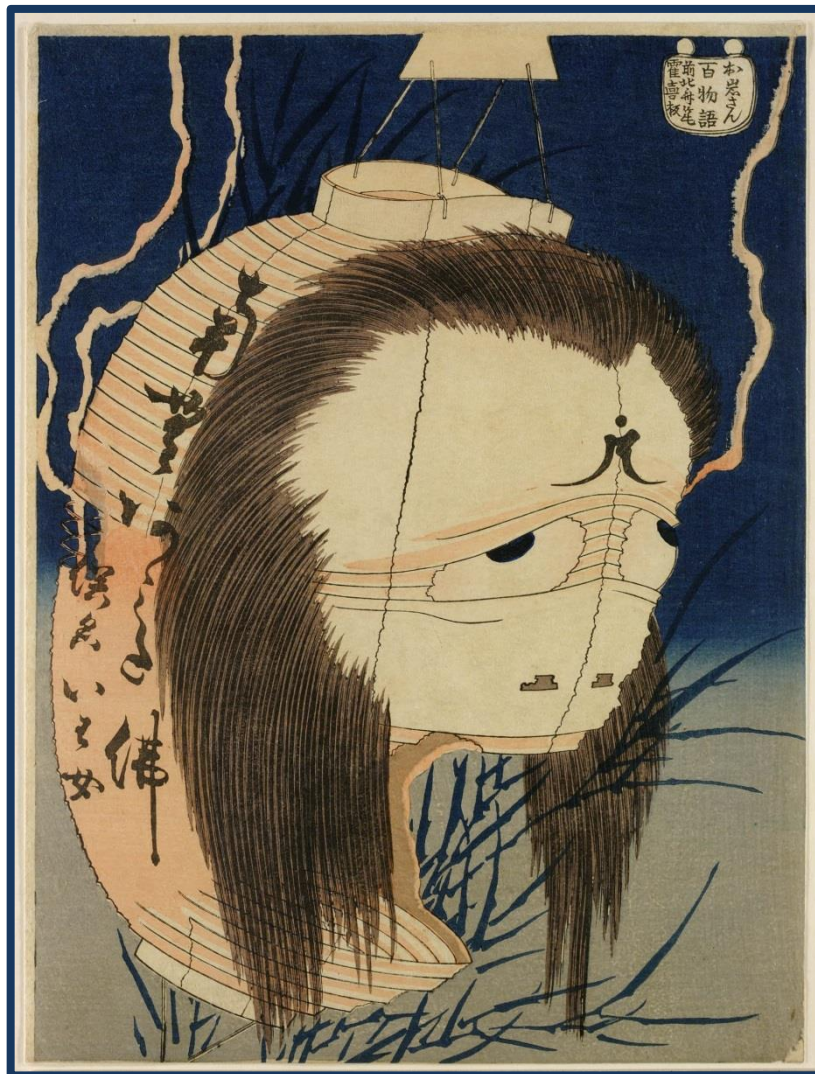


Image location: London, © Trustees of the British Museum

Plate 3b.

*The Spirit of Oiwa*

Utagawa Kuniyoshi (1797-1868)

1847-1848

woodblock print on paper

(dimensions unknown)



Image location: Oxford, © Ashmolean Museum, University of Oxford; this item is from Eastern Art Online: Yousef Jameel Centre for Islamic and Asian Art, [jameelcentre.ashmolean.org](http://jameelcentre.ashmolean.org), Ashmolean Museum, University of Oxford [EA1971.61]



Plate 4a.

Illustration of an *akashita*,  
*Hyakkai-zukan* (*The Illustrated Volume of 100 Demons*)

Sawaki Suushi

1737

emaki (picture scroll)

(dimensions unknown)

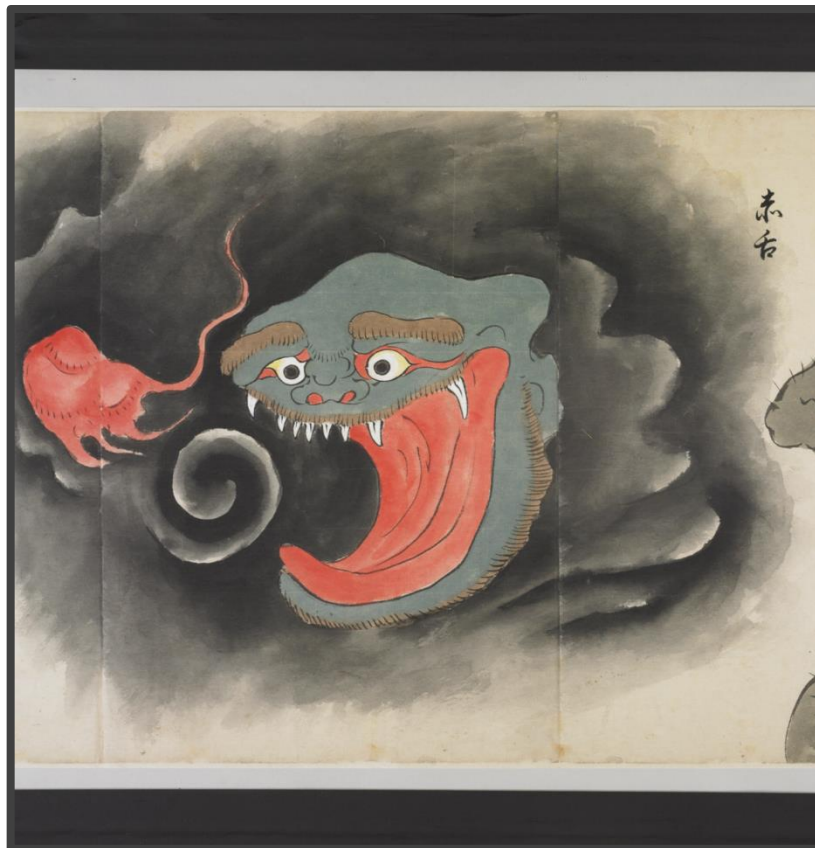


Image location: Kyoto, International Research Center for Japanese Studies

Plate 4b.

Illustration of a *hyōsube* and a *nure-onna*

*Hyakkai-zukan* (*The Illustrated Volume of 100 Demons*)

Sawaki Suushi

1737

emaki (picture scroll)

(dimensions unknown)



Image location: Kyoto, International Research Center for Japanese Studies

Plate 4c.

Illustration of a *yamawaro*

*Hyakkai-zukan* (*The Illustrated Volume of 100 Demons*)

Sawaki Suushi

1737

emaki (picture scroll)

(dimensions unknown)



Image location: Kyoto, International Research Center for Japanese Studies

Plate 4d.

*Illustration of a kami-kiri*

*Hyakkai-zukan (The Illustrated Volume of 100 Demons)*

Sawaki Suushi

1737

emaki (picture scroll)

(dimensions unknown)



Image location: Kyoto, International Research Center for Japanese Studies

Plate 4e.

Illustration of an *otoroshi*

*Hyakkai-zukan* (*The Illustrated Volume of 100 Demons*)

Sawaki Suushi

1737

emaki (picture scroll)

(dimensions unknown)



Image location: Kyoto, International Research Center for Japanese Studies



Plate 4f.

Illustration of a *rokuro-kubi*

*Hyakkai-zukan* (*The Illustrated Volume of 100 Demons*)

Sawaki Suushi

1737

emaki (picture scroll)

(dimensions unknown)



Image location: Kyoto, International Research Center for Japanese Studies

Plate 4g.

Illustration of a *yama-uba*

*Hyakkai-zukan* (*The Illustrated Volume of 100 Demons*)

Sawaki Suushi

1737

emaki (picture scroll)

(dimensions unknown)



Image location: Kyoto, International Research Center for Japanese Studies

Plate 4h.

Illustration of a *yūrei*

*Hyakkai-zukan* (*The Illustrated Volume of 100 Demons*)

Sawaki Suushi

1737

emaki (picture scroll)

(dimensions unknown)



Image location: Kyoto, International Research Center for Japanese Studies

Plate 5a.

*The Taira Ghosts Attacking Yoshitsune's Ship*

Utagawa Kuniyoshi (1797-1868)

1843-1845

woodcut on paper

32.5 x 67.9 cm



Image location: Oxford, © Ashmolean Museum, University of Oxford; This item is from Eastern Art Online: Yousef Jameel Centre for Islamic and Asian Art, [jameelcentre.ashmolean.org](http://jameelcentre.ashmolean.org), Ashmolean Museum, University of Oxford [EA1971.161].



Plate 5b.

*The Taira Ghosts Attacking Yoshitsune's Ship*  
(left panel)

Utagawa Kuniyoshi (1797-1868)

1843-1845

woodcut on paper

32.3 x 25.5 cm



Image location: Oxford, © Ashmolean Museum, University of Oxford; This item is from Eastern Art Online: Yousef Jameel Centre for Islamic and Asian Art, [jameelcentre.ashmolean.org](http://jameelcentre.ashmolean.org), Ashmolean Museum, University of Oxford [EA1971.161.c].

Plate 5c.

*The Taira Ghosts Attacking Yoshitsune's Ship*  
(middle panel)

Utagawa Kuniyoshi (1797-1868)

1843-1845

woodcut on paper

32.3 x 25.5 cm



Image location: Oxford, © Ashmolean Museum, University of Oxford; This item is from Eastern Art Online: Yousef Jameel Centre for Islamic and Asian Art, [jameelcentre.ashmolean.org](http://jameelcentre.ashmolean.org), Ashmolean Museum, University of Oxford [EA1971.161.b].



Plate 5d.

*The Taira Ghosts Attacking Yoshitsune's Ship*  
(right panel)

Utagawa Kuniyoshi (1797-1868)

1843-1845

woodcut on paper

(dimensions unknown)



Image location: Oxford, © Ashmolean Museum, University of Oxford; This item is from Eastern Art Online: Yousef Jameel Centre for Islamic and Asian Art, [jameelcentre.ashmolean.org](http://jameelcentre.ashmolean.org), Ashmolean Museum, University of Oxford [EA1971.161.a].

Plate 6a.

*Minamoto Raiko and the 'Earth Spider'*

(V&A title: *The Spider Monster Creating Monsters in the Mansion of Minamoto no Yorimitsu*)

Utagawa Kuniyoshi (1797-1861)

1843

woodcut on paper

34.6 cm x 72.7 cm



Image location: London, © Victoria and Albert Museum [E.10535-1886]



Plate 6b.

*Minamoto Raiko and the 'Earth Spider'*

(V&A title: *The Spider Monster Creating Monsters in the Mansion of Minamoto no Yorimitsu*)

(left panel)

Utagawa Kuniyoshi (1797-1861)

1843

woodcut on paper

(dimensions unknown)



Image location: London, © Victoria and Albert Museum [E.10535-1886]

Plate 6c.

*Minamoto Raiko and the 'Earth Spider'*

(V&A title: *The Spider Monster Creating Monsters in the Mansion of Minamoto no Yorimitsu*)

(middle panel)

Utagawa Kuniyoshi (1797-1861)

1843

woodcut on paper

(dimensions unknown)



Image location: London, © Victoria and Albert Museum [E.10535-1886]



Plate 6d.

*Minamoto Raiko and the 'Earth Spider'*

(V&A title: *The Spider Monster Creating Monsters in the Mansion of Minamoto no Yorimitsu*)

(right panel)

Utagawa Kuniyoshi (1797-1861)

1843

woodblock print on paper

(dimensions unknown)



Image location: London, © Victoria and Albert Museum [E.10535-1886]

## Plate 7.

### *The Web of Government*

Ukita Ikkei (1795-1859)

Mid-19<sup>th</sup> century

hanging scroll on paper, ink, colour and gold wash

168 x 58.9 cm

DEMONS AND PROTEST IN LATE TOKUGAWA JAPAN

23

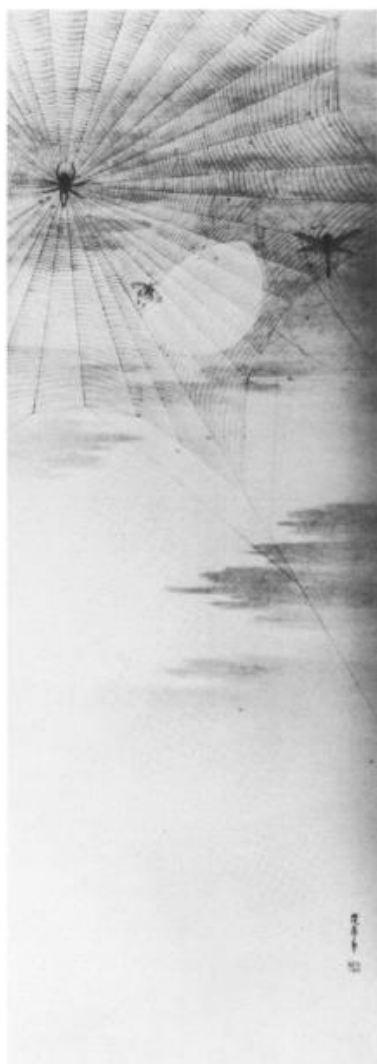


FIG. 15. *The Web of Government*. By Ukita Ikkei (1795-1859). Hanging scroll, ink, gold color, and gold wash on paper. 168 x 58.9 cm. Koshimono Kōichi Collection, Hyogo.

Image location: Hyōgo, Koshimono Kōichi Coll.

Plate 8.

*Inada Kyûzô Shinsuke murders the kitchenmaid suspended from a rope, Eimei nijūhasshūko (Twenty-eight Famous Murders with Poems)*

Tsukioka Yoshitoshi (1839-1892)

c. 1867

woodblock print on paper

34.9 x 24.1 cm



Image location: San Francisco, Fine Arts Museum of San Francisco

Plate 9.

*The Hag of Adachigahara*

Tsukioka Yoshitoshi (1839-1892)

1885

ōban

38 x 26 cm



Image location: Kyoto, International Research Center for Japanese Studies



Plate 10.  
*Kohada Koheiji,*  
*Hyaku Monogatari*

Katsushika Hokusai (1760-1849)

c. 1830

woodblock print on paper

(dimensions unknown)



Image location: London, © Trustees of the British Museum

Plate 11.

*Neue Zeyttung auß der Insel Japonien*

Michael Manger (1570-1603)

1586

(dimensions unknown)



Image caption: "Neue Zeyttung auß der Insel Japonien: A broadside on the arrival of four Japanese ambassadors in Milan; with a hand-coloured woodcut depicting four young men and one their Jesuit teacher Meschita in Western attire, and with a title and text in letterpress. (Augsburg, Manger: 1586)"

Image location: London, © Trustees of the British Museum



Plate 12.  
*The Scruple*

William Sharp (1749-1824)

1781

(dimensions unknown)



Image location: London, © Trustees of the British Museum

Plate 13.

*Yorimitsu and the Earth Spider*

Katsushika Hokusai (1760-1849)

c. 1818

(media and dimensions unknown)

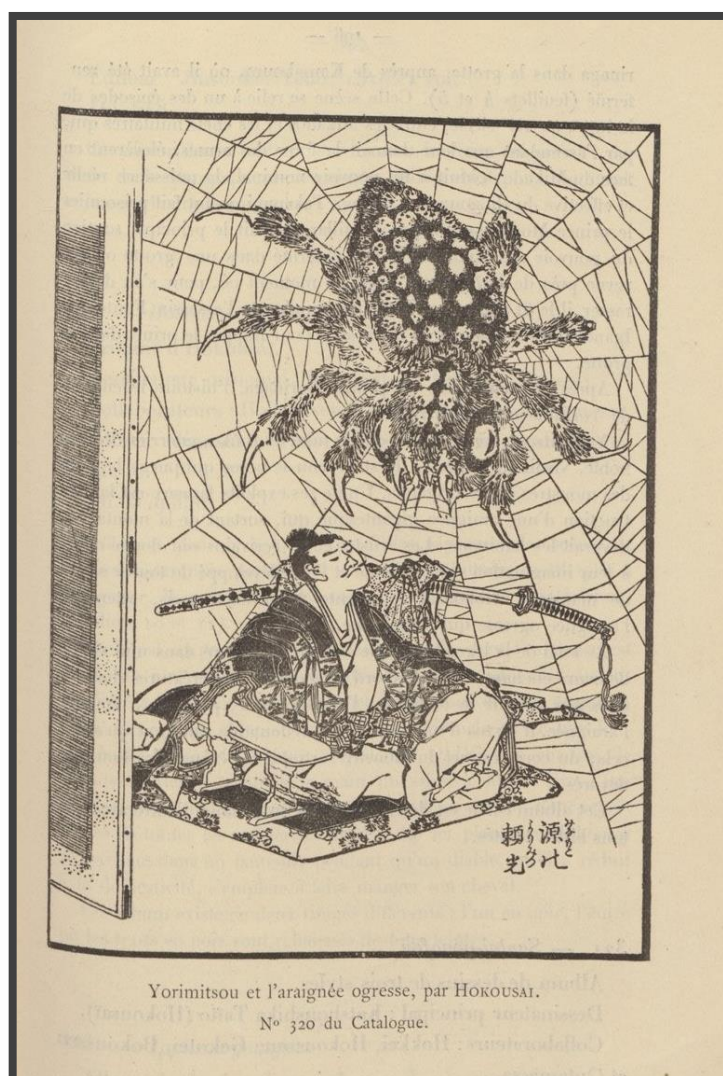


Image location: Duret, 1900: 194-195; pl. 320

Plate 14.

Kouaïdan hiyak'ki dzuyé (Apparitions of a Hundred Monsters)

Katsukawa Shunyei (1762-1819)

woodblock print on paper

(details unknown)

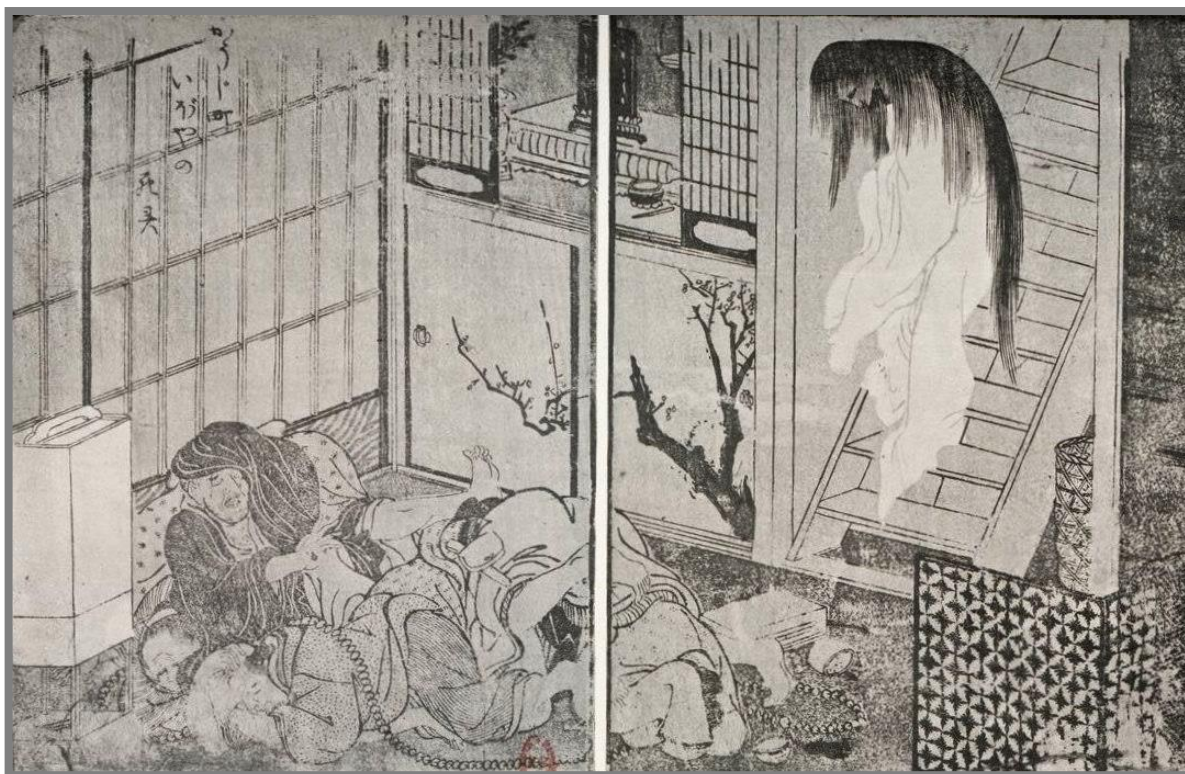


Image location: Paris, Bibliothèque Nationale



Plate 15.

*The Temptation of Buddha*

Katsushika Hokusai (1760-1849)  
(details unknown)

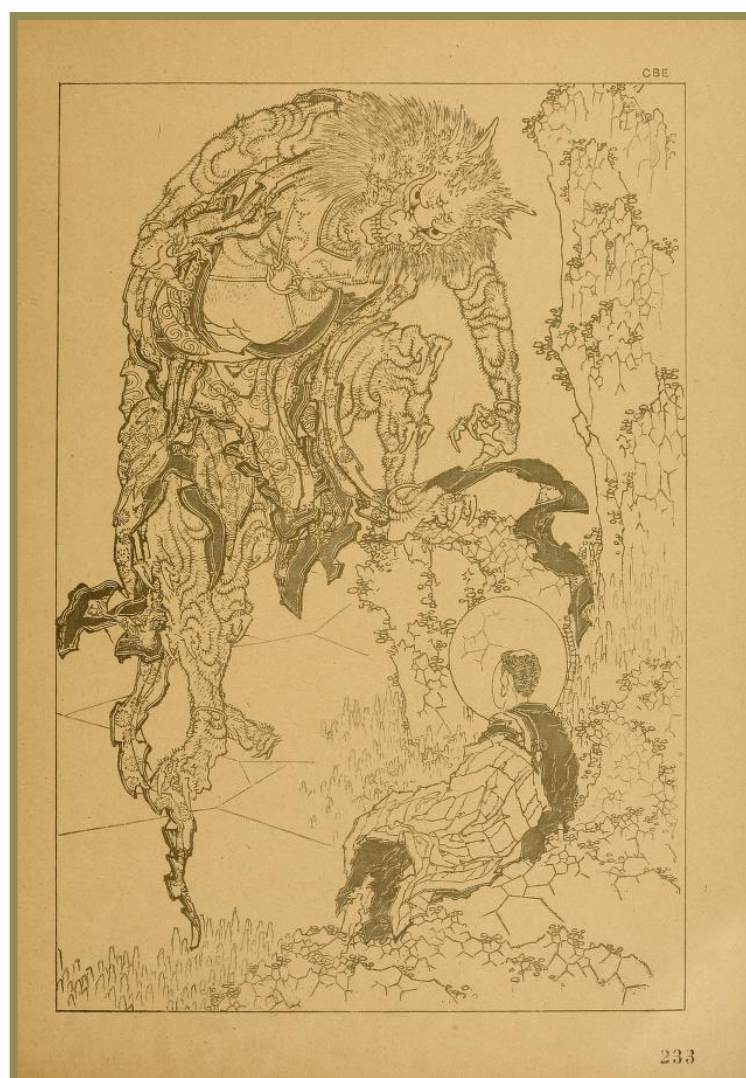


Image location: Gillot, 1880s: pl. 233

Plate 16.

*Apparition of the Courtesan, 1765*

Ran'ū (dates unknown)

1765

woodblock print, ink and colour on paper

28x19.4cm



Image citation: Formerly Vever Collection, now Freer Gallery of Art and Arthur M. Sackler Gallery.

Plate 17.

*Onoe Matsusuke I playing the role of Kohada Koheiji*

Utagawa Toyokuni (1769-1825)

1808

Woodblock print on paper

37x25cm



Image citation: Formerly Haviland Collection and exhibited in Paris in 1910. Reproduced in V & I no. 47: xxviii. Then the Henri Vever Collection

Image location: London, © Trustees of the British Museum



Plate 18.

*Okamé: Les Amis de l'art japonais dîneront au restaurant Cardinal*

One of several invitation cards printed for Société des amis de l'art japonais, 1870-1914

Roche, Pierre (1855-1922)

1908

(details unknown)



Image location: Paris, Bibliothèque Nationale de France, département Estampes et photographie [PET FOL-EF-441 (A,5)]

Plate 19.

Front cover of *Le Japon artistique*

No. 20, December, 1889

No. 30, October, 1890

Siegfried (Samuel) Bing (1838-1905) (editor)

1888-1891

journal page

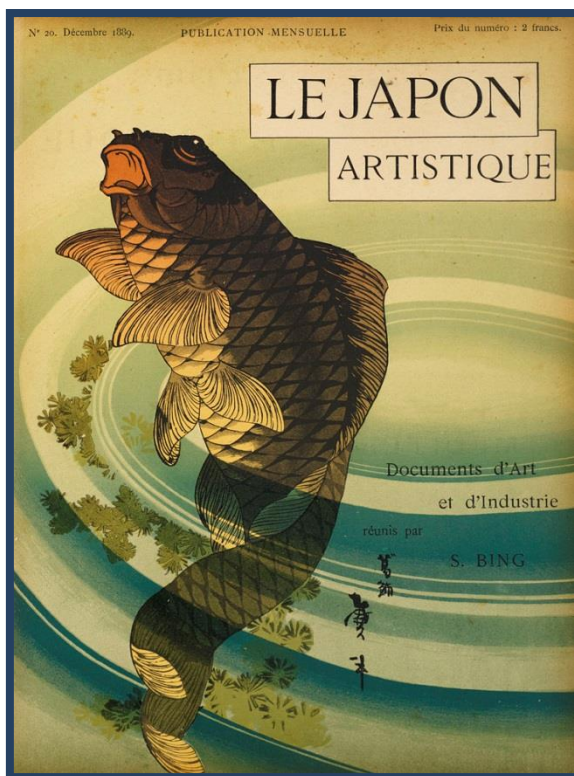


Image location: Digital Library for the Decorative Arts and Material Culture



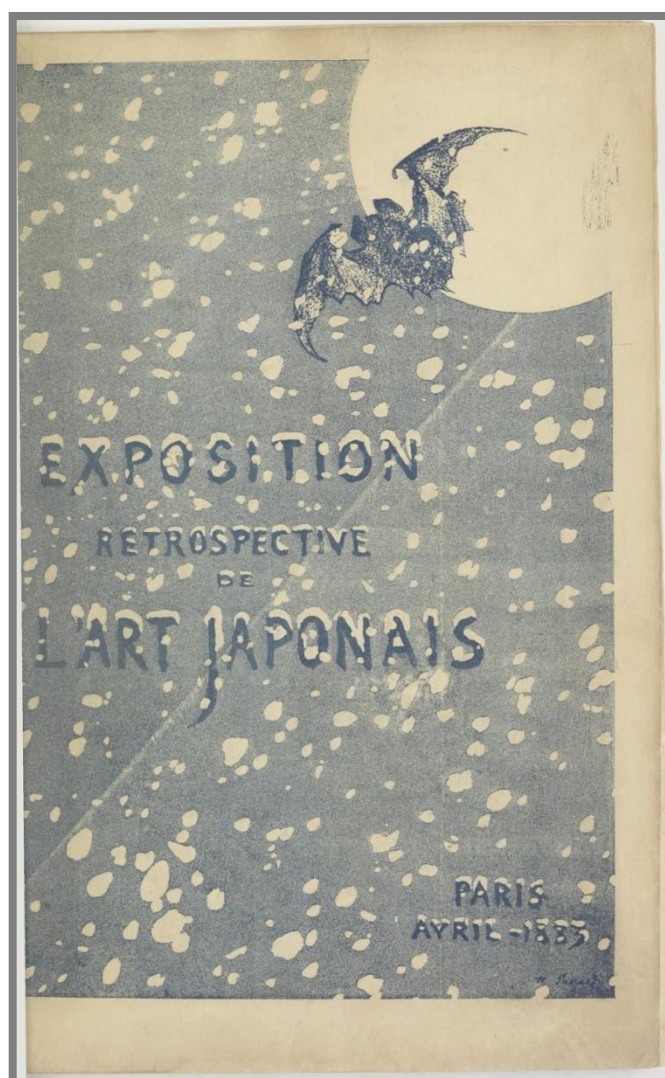
Plate 20.

Front cover of *Catalogue de l'exposition retrospective de l'art japonais*

Louis Gonse (editor)

1883

catalogue page



## Plate 21

### Netsuke representing Futen, The Storm Spirit

(artist unknown)

18th century

wood with inlays

8.3 x 2.9 x 2.5 cm



Image location: Los Angeles County Museum of Art

Plate 22.

*Okabe Metamorphosed into a Cat*

Utagawa Kunisada

1835

woodcut print on paper

36.7 x 77.4 cm



An imprint of this work is in Monet's collection of Japanese prints at Giverny.

Plate 23.

*Amaterasu coming out of the cave*

Gyokuei

late 19<sup>th</sup> century

98 x 2.3 cm

(dimensions unknown) - the Van Gogh catalogue of Japanese prints cites the size of this as 980x23 mm however do you think that is a mistake, surely it should be 980x230 or 98x23 as it is described as a 'small kakemono'?



Image location: van Rappard-Boon et al., 2006: 68, pl. 22



Plate 24.

*Okabe,*

*Tōkaidō gojusan-tsui (Fifty-three pairings along the Tōkaidō Road)*

Utagawa Kuniyoshi (1797-1861)

1843-1845

woodblock print on paper

36.1 x 25.6 cm



Image location: London, © The Trustees of the British Museum

Plate 25.

*Onoe Baikō as a female ghost holding a baby / Ghost of the Swamp*

Utagawa Kunisada

c. 1830

ōban; nishiki-e

38.1 x 26.4 cm



Image location: Amsterdam, Van Gogh Museum

Plate 26.

*Kuwana,*

*Tōkaidō gojusan-tsui (Fifty-three pairings along the Tōkaidō Road)*

Utagawa Kuniyoshi (1797-1861)

1843-1845

woodblock print on paper

37.3 x 25.2 cm



Image location: London, © The Trustees of the British Museum



Plate 27.

*Nakamura Shikan II as Tadanobu*

Shunbaisai Hokuei (d. 1837)

1835

(details unknown)



Image location: London, © Victoria and Albert Museum [E.5016-1886]



Plate 28a.

*The Rescue of Minamoto no Tametomo by Goblins*

Utagawa Kuniyoshi (1797-1861)

c. 1851

woodblock print on paper

(dimensions unknown)

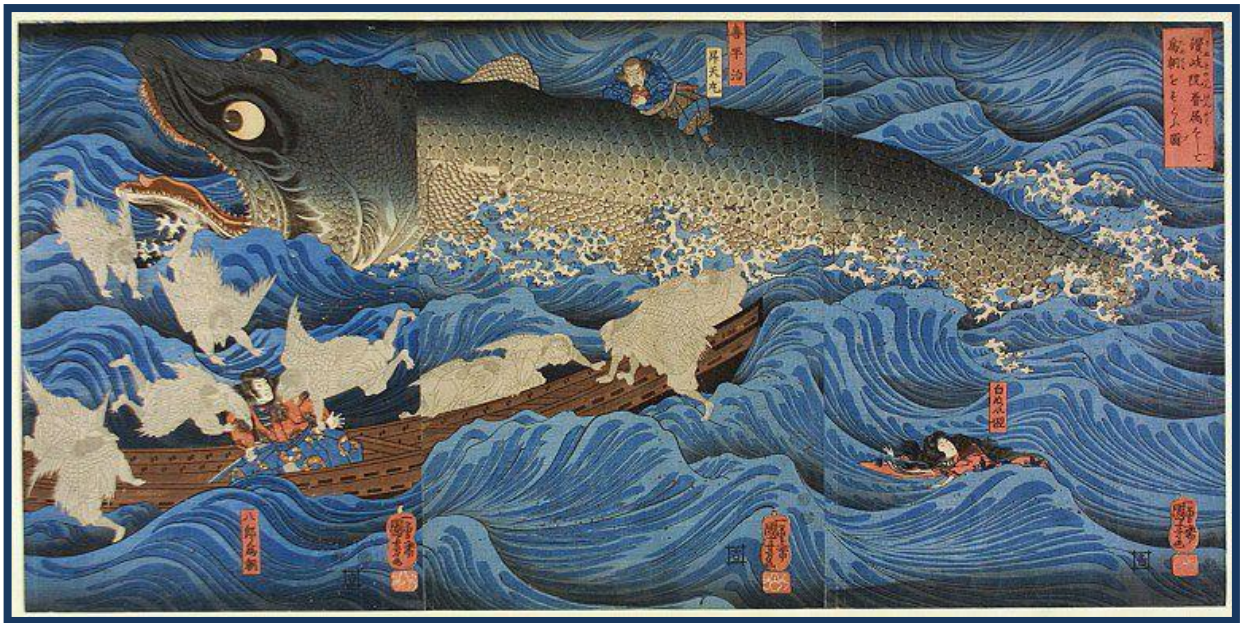


Image location: London, © Victoria and Albert Museum [E.10605-1886]

Plate 28b.

*The Rescue of Minamoto no Tametomo by Goblins*  
(left panel)

Utagawa Kuniyoshi (1797-1861)

c. 1851

woodblock print on paper

(dimensions unknown)



Image location: London, © Victoria and Albert Museum, London [E.10605-1886]

Plate 28c.

*The Rescue of Minamoto no Tametomo by Goblins*  
(middle panel)

Utagawa Kuniyoshi (1797-1861)

c. 1851

woodblock print on paper

(dimensions unknown)

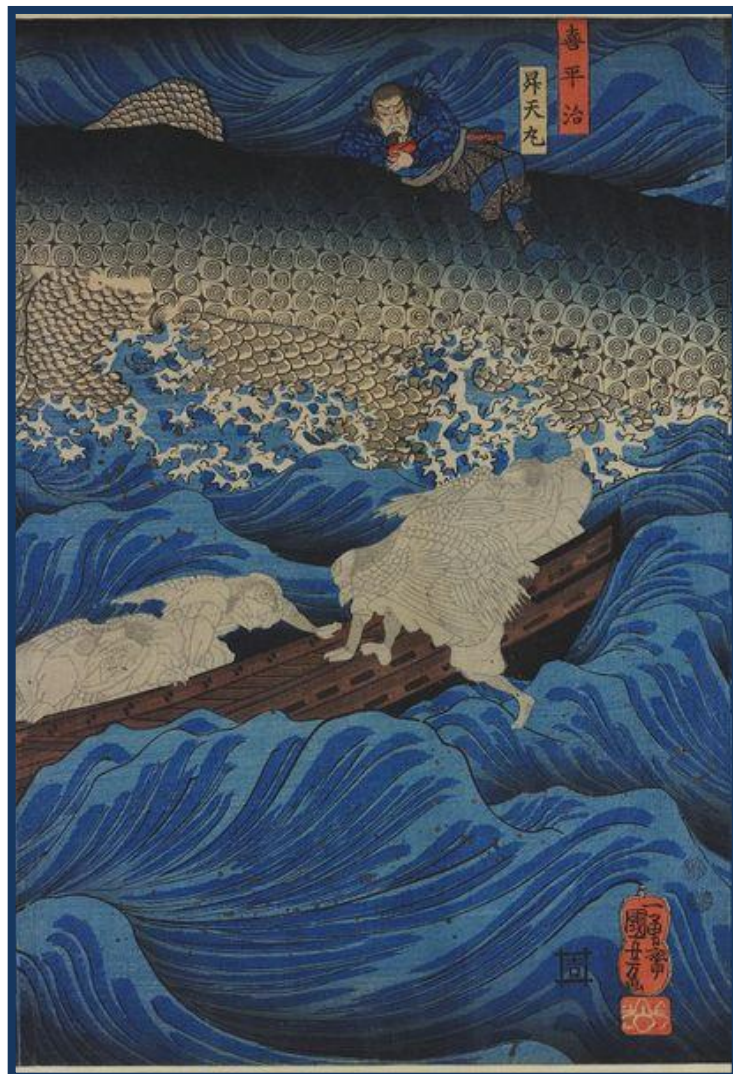


Image location: London, © Victoria and Albert Museum, London [E.10605-1886]



Plate 28d.

*The Rescue of Minamoto no Tametomo by Goblins*  
(right panel)

Utagawa Kuniyoshi (1797-1861)

c. 1851

woodblock print on paper

(dimensions unknown)

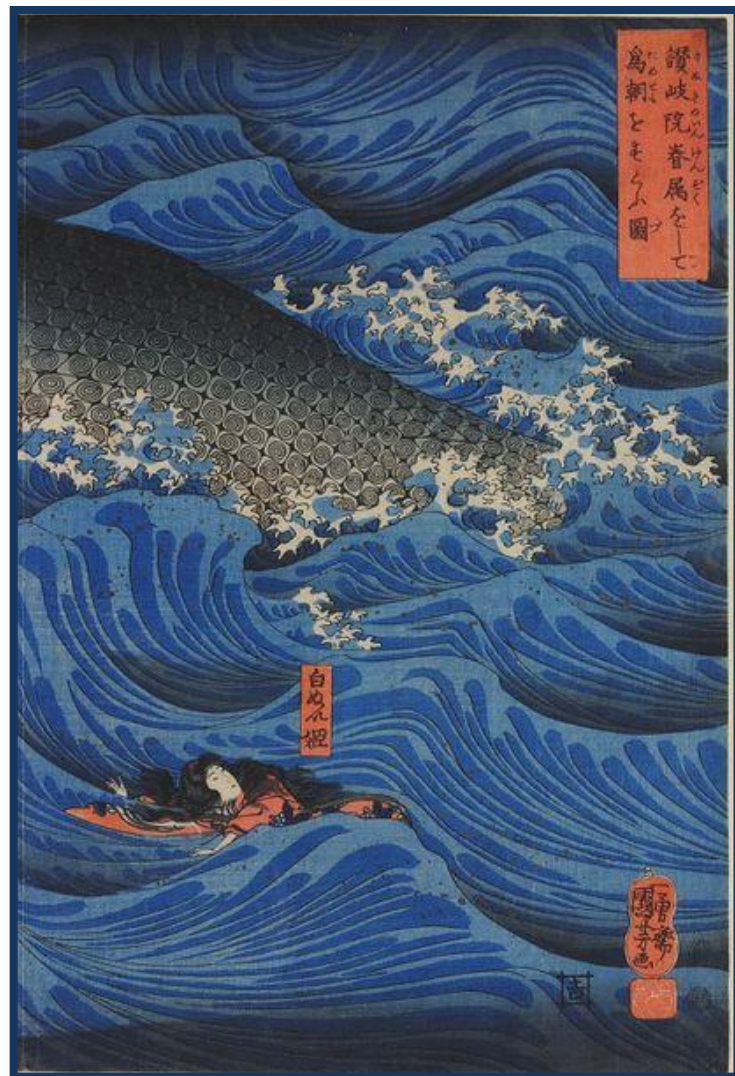


Image location: London, © Victoria and Albert Museum, London [E.10605-1886]

Plate 29a.

*The Giant Octopus and Others; Newly Published Quick Changes:  
Two-faced Monsters*

Utagawa Sadahide

1830-1844

Ink and colour on paper

(dimensions unknown)



Image location: London, © Victoria and Albert Museum, London [E.2198-1909]

Plate 29b.

*Mouse Monster and Others; Newly Published Quick Changes: Two-faced Monsters*

Utagawa Sadahide

1830-1844

Ink and colour on paper

(dimensions unknown)



Image location: London, © Victoria and Albert Museum, London [E.2197-1909]



Plate 29c.

*Fox-Genkurô and Others; Newly Published Quick Changes: Two-faced Monsters*

Utagawa Sadahide

1830-1844

Ink and colour on paper

(dimensions unknown)



Image location: London, © Victoria and Albert Museum, London [E.2200-1909]

Plate 29d.

*The Monster of Good and Evil and Others; Newly Published Quick Changes: Two-faced Monsters*

Utagawa Sadahide

1830-1844

Ink and colour on paper

(dimensions unknown)



Image location: London, © Victoria and Albert Museum, London [E.2199-1909]

Plate 29e.

*Mendicant Monk in Katsushika and Others; Newly Published Quick Changes: Two-faced Monsters*

Utagawa Sadahide

1830-1844

Ink and colour on paper

(dimensions unknown)



Image location: London, © Victoria and Albert Museum, London [E.2196-1909]



Plate 30.

*Catalogue of the Valuable Collection of Japanese Colour Prints*  
*The Property of John Stewart Happer, Esq.*

Sotheby, Wilkinson & Hodge

1909

catalogue entry

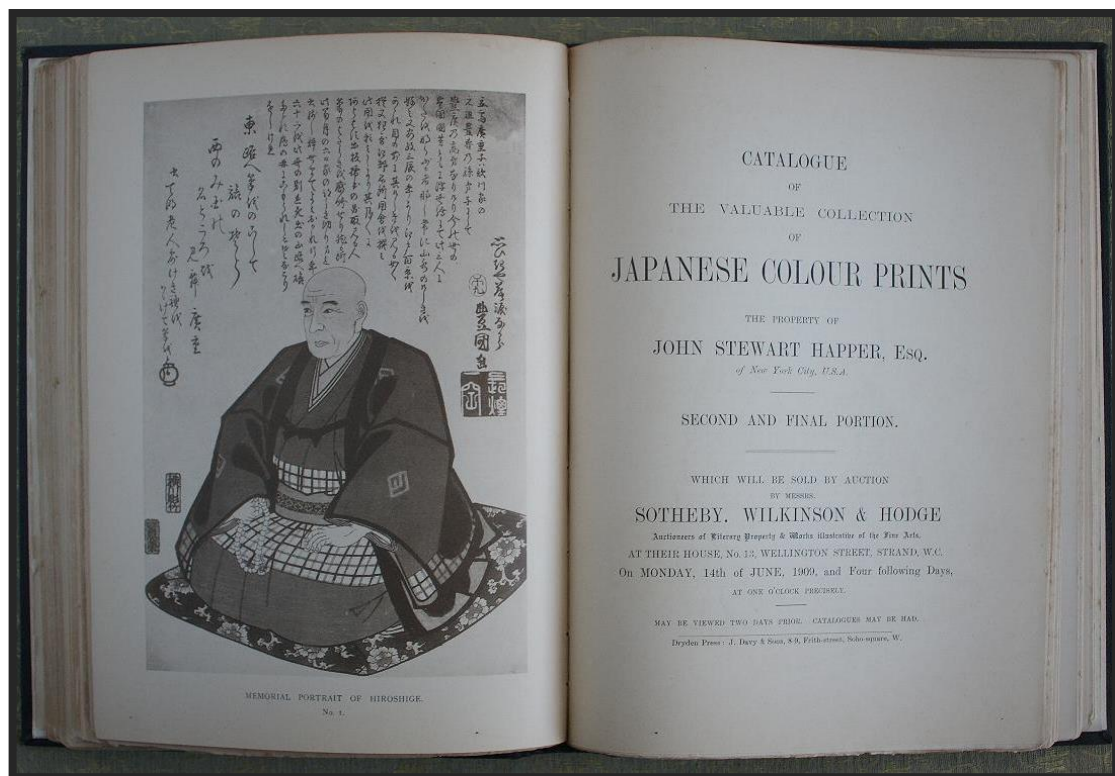


Image location: courtesy of Brian Page Antiques

## Plate 31.

### Vase

Edward William Godwin (1833-1886); William Watt

c. 1877

Slipware

20.7 x 19 cm



Image location: London, Victoria & Albert Museum [C.2-2008]



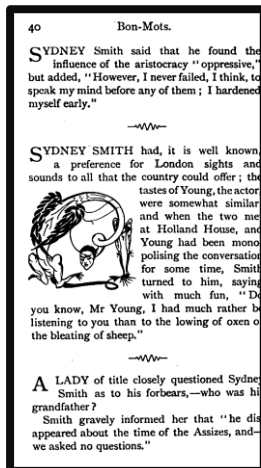
## Plate 32.

### a-f. Illustrations for *Bon-Mots of Sydney Smith and R. Brinsley Sheridan*

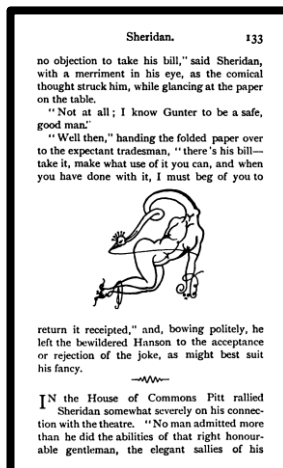
Aubrey Vincent Beardsley (1872-1898)  
1893

### g. *J'ai baisé ta bouche Iokanaan* Design for 'The Climax' for Oscar Wilde's 'Salome'

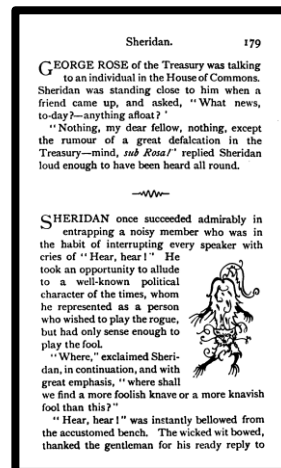
Aubrey Vincent Beardsley (1872-1898)  
1893  
line block print  
22.8 x 12.7 cm



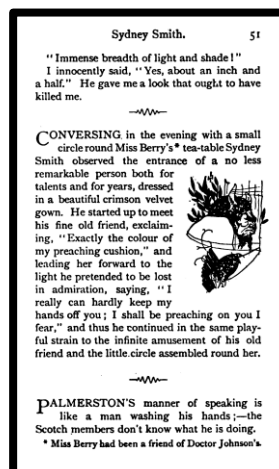
a.



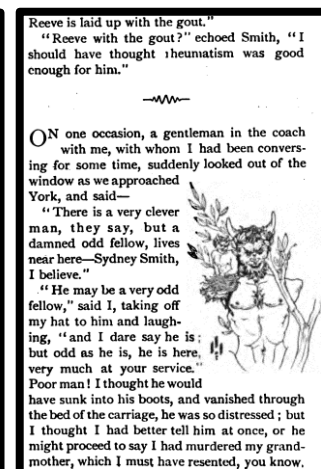
b.



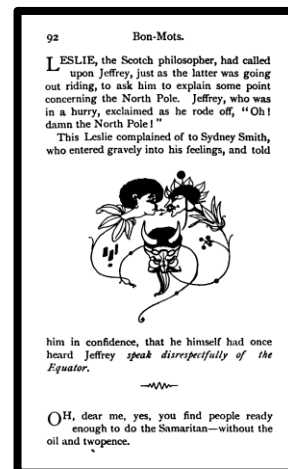
c.



d.



e.



f.



g.

Image location: a-f. Jerrold, 1893: 40; 133; 179; 51; 79; 92; g. London, © Victoria and Albert Museum [E.456-1899]

Plate 33.

Illustration accompanying *The Tongue Cut Sparrow*  
*Tales of Old Japan*

(details unknown)

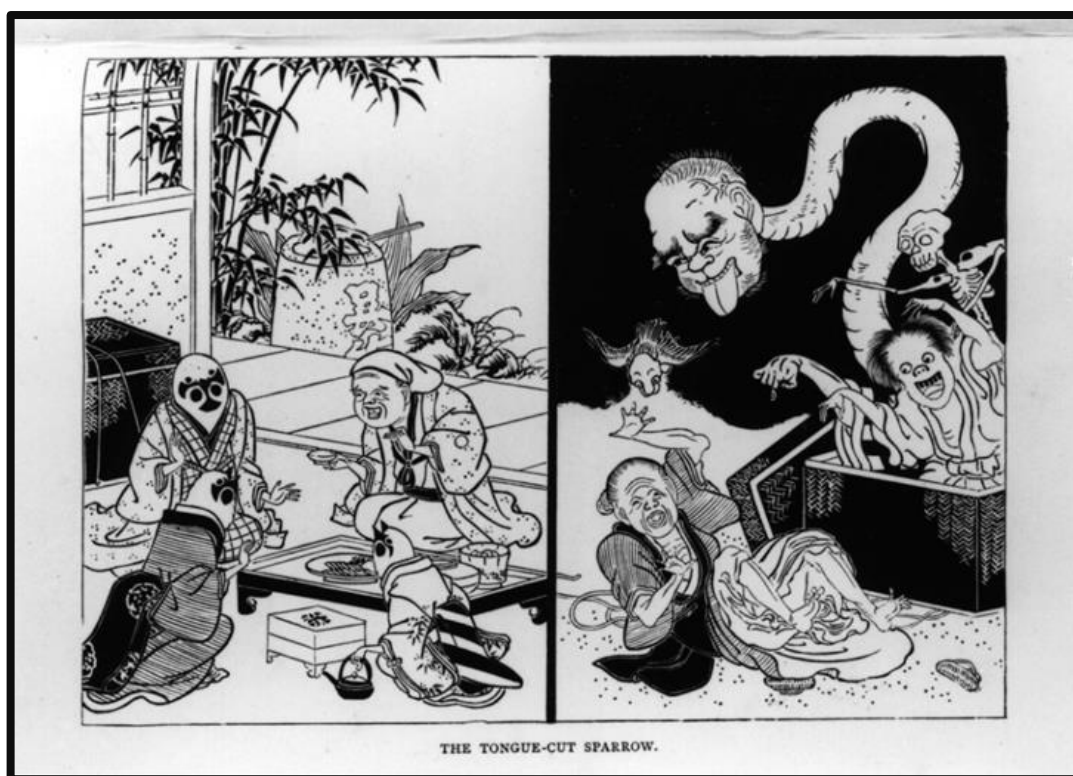
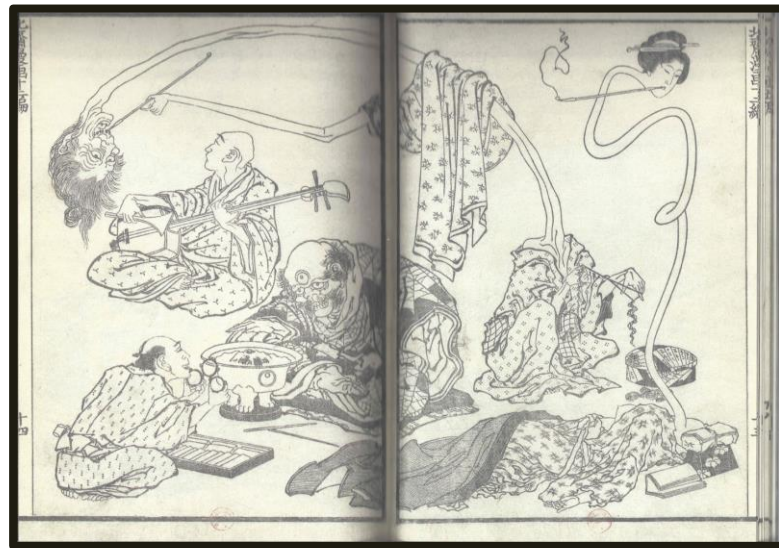


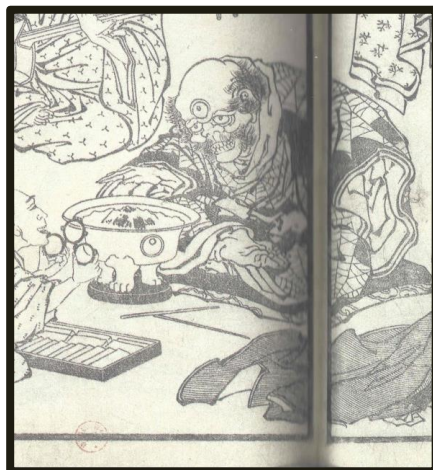
Image location: Mitford, 1871: 250

Plate 34.  
Illustration of a *rokuro-kubi*  
Hokusai *Manga*

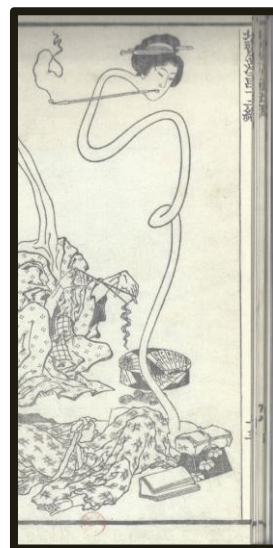
Katsushika Hokusai (1760-1849)  
woodcut on paper  
(details unknown)



a.



b.



c.

Image location: Bouquillard & Marquet, 2007: 132-133, pl. 2



Plate 35.

*Witches' Sabbath*

Hans Baldung, called 'Grien'

1510

woodcut

37.5 x 25.4 cm



Image location: London, © Trustees of the British Museum

Plate 36.  
*The Temptation of Saint Anthony,*  
*Isenheim Altarpiece*  
(detail)

Matthias Grünewald (c. 1475–80-1528)  
c. 1512-1516  
oil on panel  
(dimensions unknown)



Image location: Colmar france, Musée Unterlinden



Plate 37.

*The Ghost of a Flea*

William Blake 1757–1827

c. 1819–20

tempera and gold on mahogany

21.4 x 16.2 cm



Image location: London, Tate Britain [N05889]

Plate 38.  
Illustrations of *Oni*,  
*Japanese scroll*

(artist unknown)

emaki

(date and dimensions unknown)



Image location: Kyoto, International Research Center for Japanese Studies

Plate 39.

*The Nightmare*

Henry Fuseli (1741-1825)

1781

oil on canvas

101.6 x 126.7 cm



Image location: Detroit, Detroit Institute of Arts [55.5.]



Plate 40.

*The Blue Bower*

Dante Gabriel Rossetti (1828 - 1882)

1865

oil on canvas

84 x 70.9 cm



Image location: Bridgemanart.com



Plate 41.

*Caprice in Purple and Gold: The Golden Screen*

James Abbott McNeil Whistler (1834-1903)

1864

oil on wood panel

50.1 × 68.5 cm

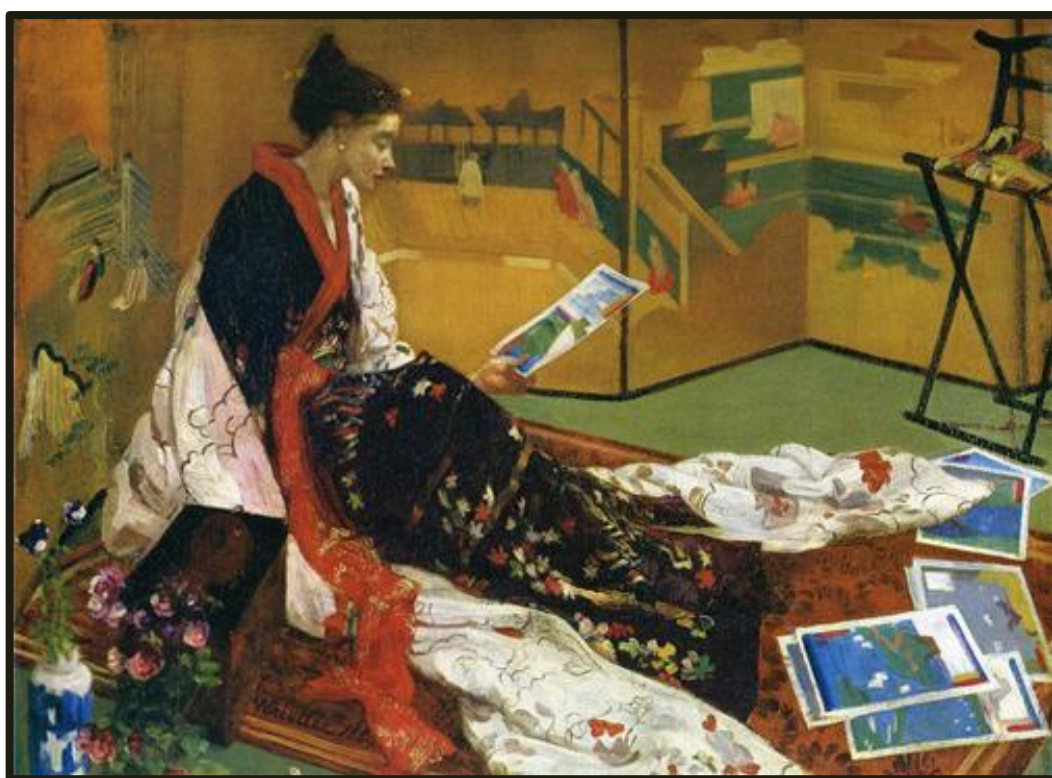


Image location: Freer Gallery of Art and Arthur M. Sackler Gallery [F1904.75a]

Plate 42.

*Still-life with Vase with Japanese Samurai Warrior*

Odilon Redon (1840-1916)

c. 1905

pastel on paper

228.6 x 184.2 cm

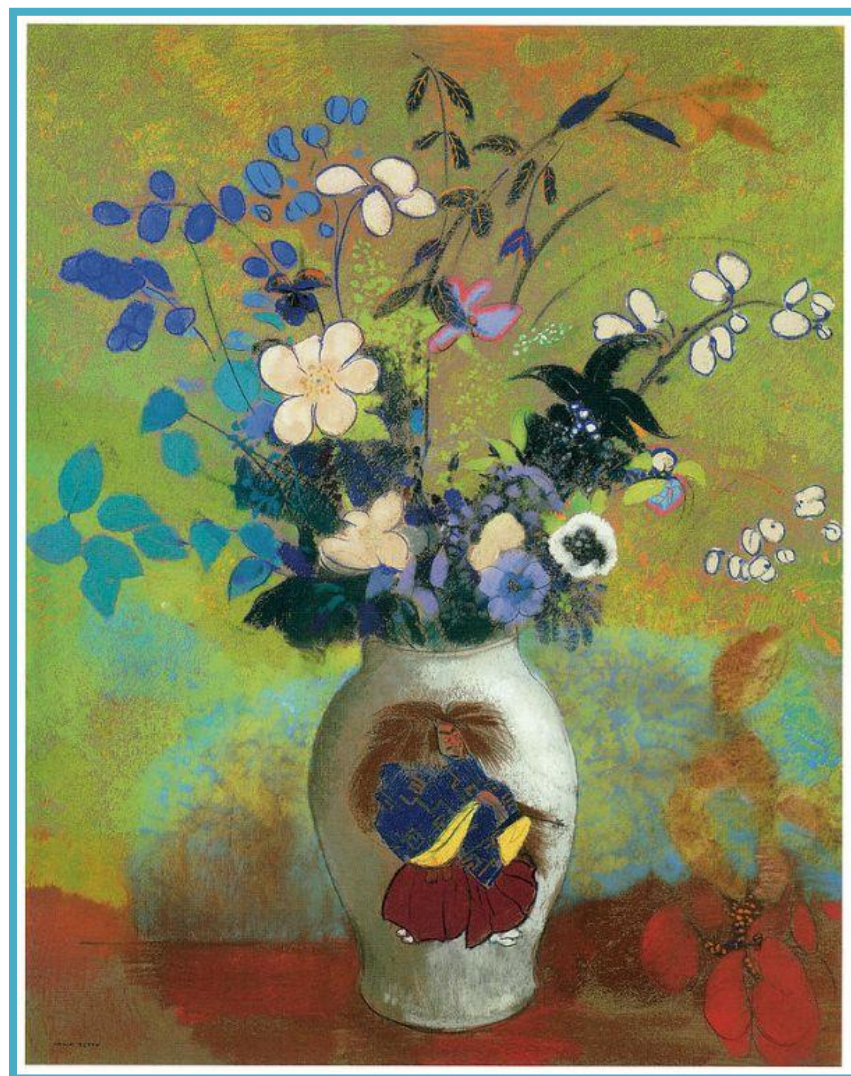


Image location: Oslo, Galleri K

Plate 43.

*The Marsh Flower, A Sad Human Head,  
No. 2, Homage to Goya*

Odilon Redon (1840-1916)

1885

lithograph on paper

27.3 x 20.4 cm



Image location: New York, Museum of Modern Art



Plate 44.

*Then There Appears a Singular Being, with the Head of a Man and  
the Body of a Fish*

*No. 5, The Temptation of St. Anthony*

Odilon Redon (1840-1916)

1888

lithograph in black on ivory China paper, laid down on ivory wove paper (chine collé)

27.6 x 17.1 cm

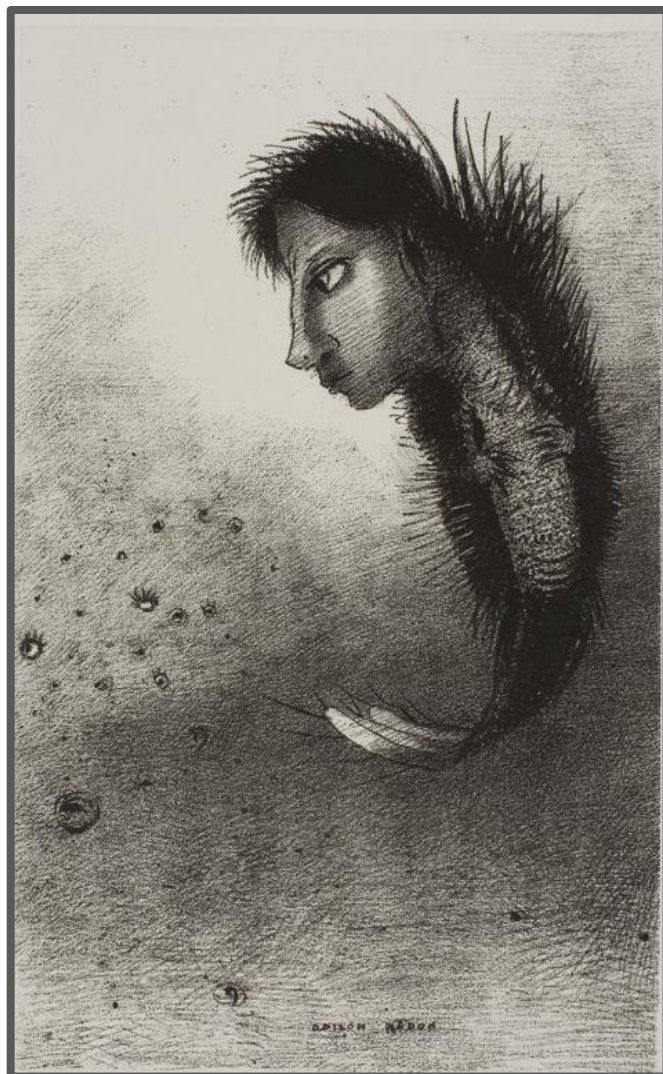


Image location: Art instituted of Chicago, The Stickney Collection [1920.1637]



Plate 45.

Japanese illustration of a *ningyo* (mermaid demon)

(artist unknown)

late Edo period

(medium and dimensions unknown)

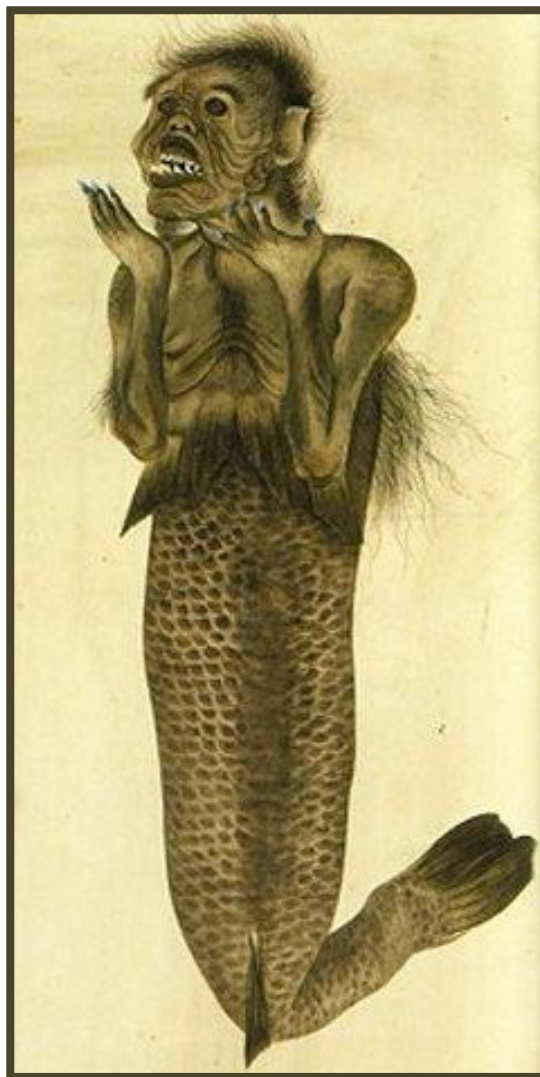


Image location: Collection of Jan Cock Blomhoff 1817-1824; now Leiden: National Museum of Ethnography (Museum Volkenkunde).

Plate 46.  
Postcard of a *ningyo* 'mummy'

(artist unknown)  
late 19th century  
postcard

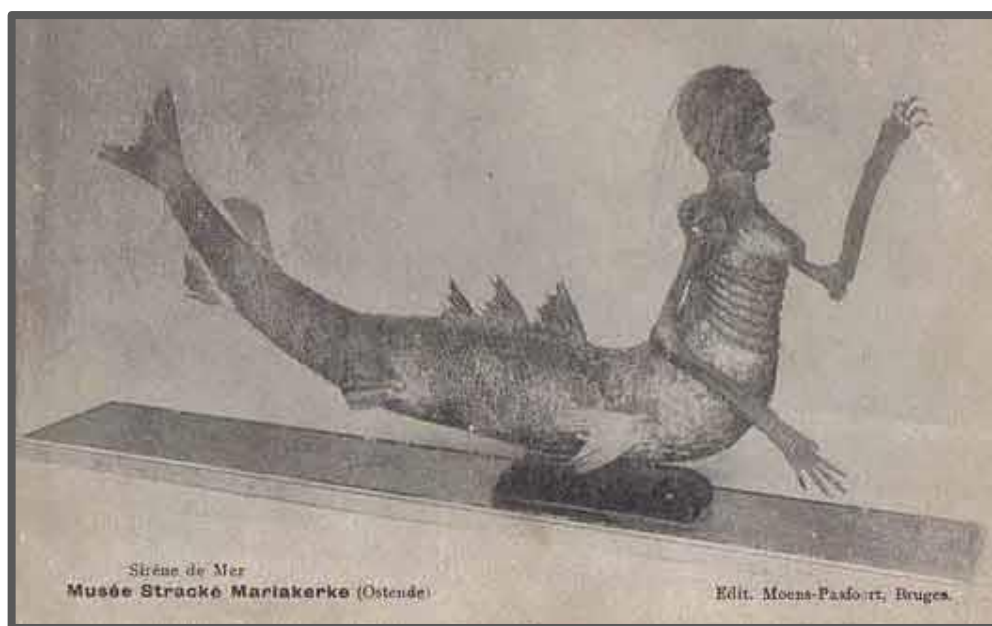


Image location: Ostend, Musée Stracké.

Plate 47.

Japanese *ningyo* 'mummy'

(artist unknown)

late Edo period

fish and animal parts held together with string and paper



Image location: Collection of Jan Cock Blomhoff 1817-1824; now Leiden: National Museum of Ethnography (Museum Volkenkunde).

Plate 48.

*Woman wearing a toque and a mermaid's tail*

Odilon Redon (1840-1916)

1898

lithograph on paper

23.7 x 22.9 cm

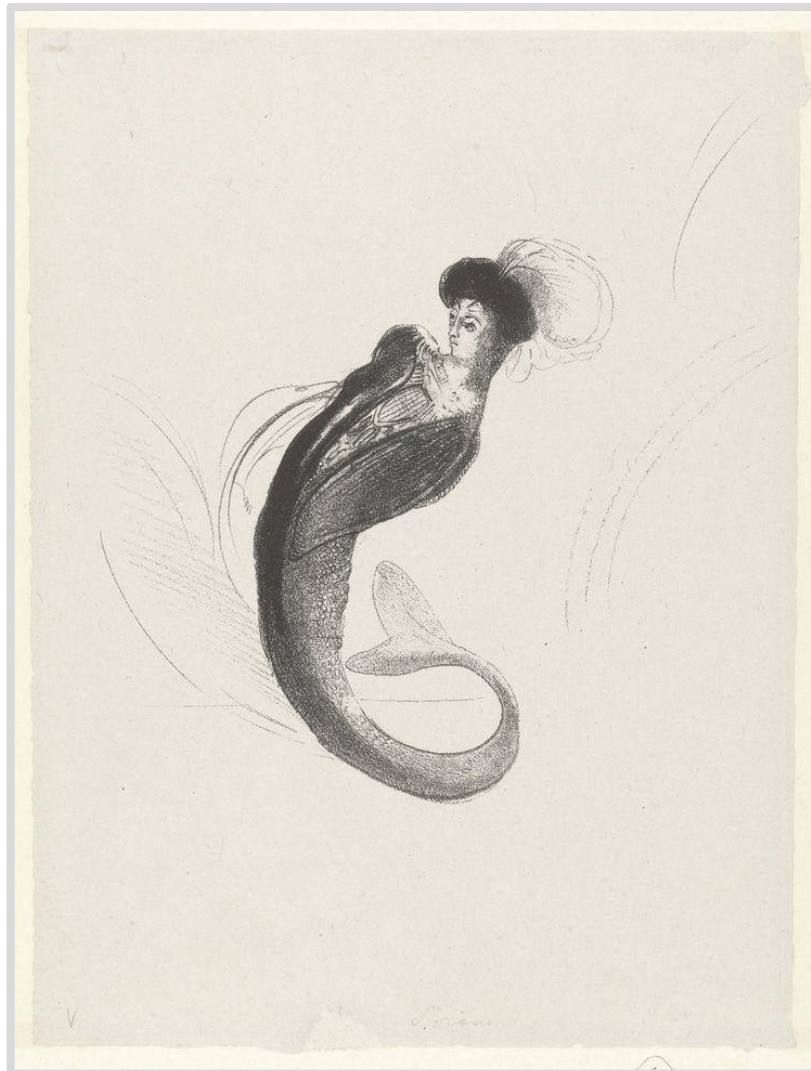


Image location: New York, Museum of Modern Art.



Plate 49.

*Skiapod*

Odilon Redon (1840-1916)

1892

etching and drypoint

20.1 x 14.9 cm

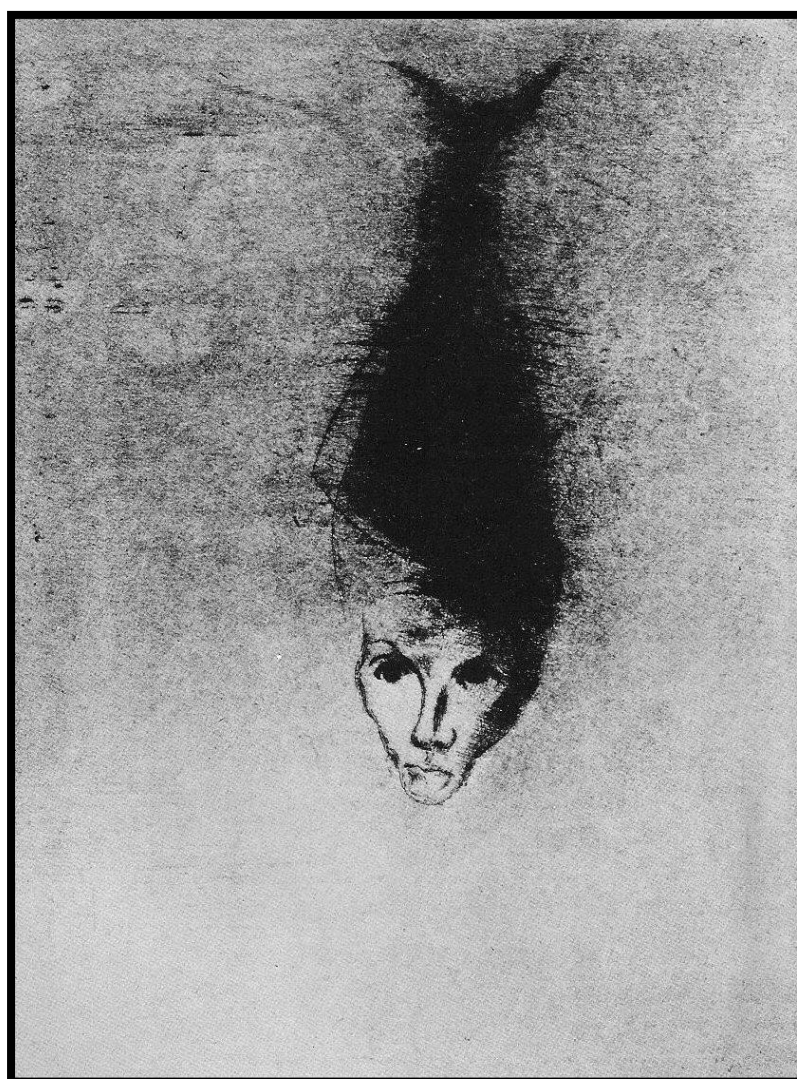


Image location: Paris, Bibliothèque Nationale

Plate 50.

*A Death's Head crowned with Roses*

*No. 6, The Temptation of St. Anthony, first serie*

Odilon Redon (1840-1916)

1888

lithograph

29.7 x 21.4 cm

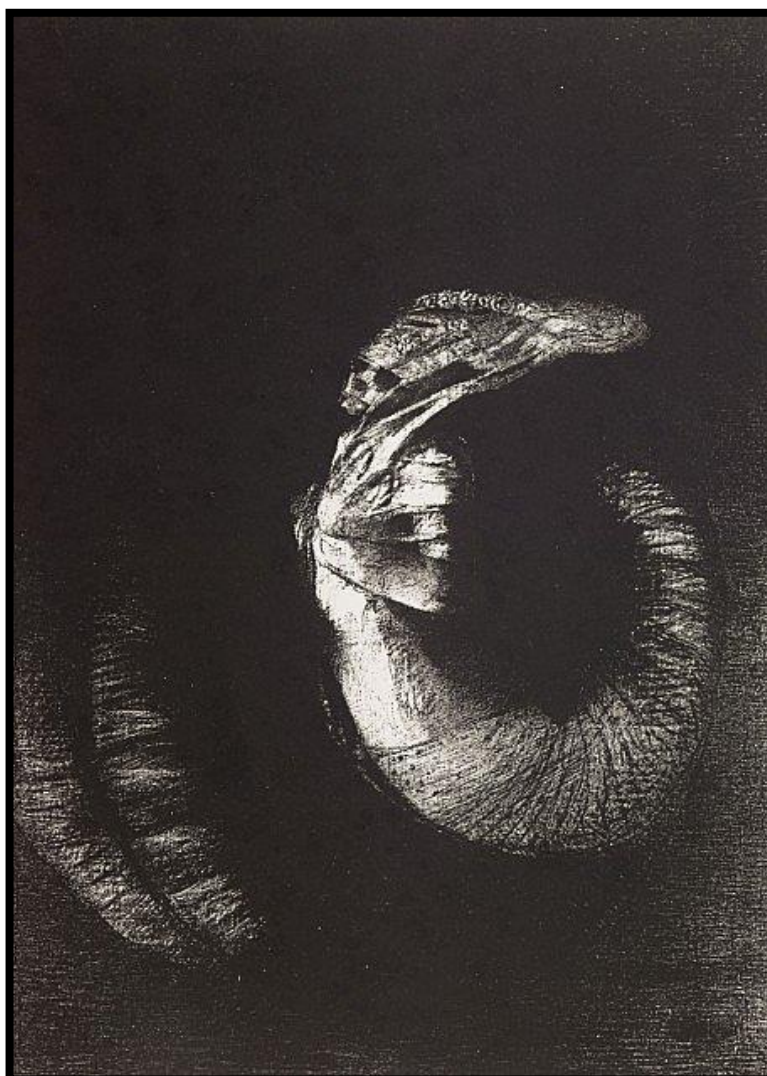


Image location: New York, Museum of Modern Art [126.1956.6]

Plate 51.  
*Cat Fish (Namazu-e)*

(artist unknown)  
1855  
woodblock print on paper  
(dimensions unknown)



Image location: Kyoto, International Research Centre for Japanese Studies

Plate 52.

*And the eyes without heads were floating like molluscs,  
No. 13, The Temptation of St. Anthony, third series*

Odilon Redon (1840-1916)

1896

lithograph

32 x 22.4 cm

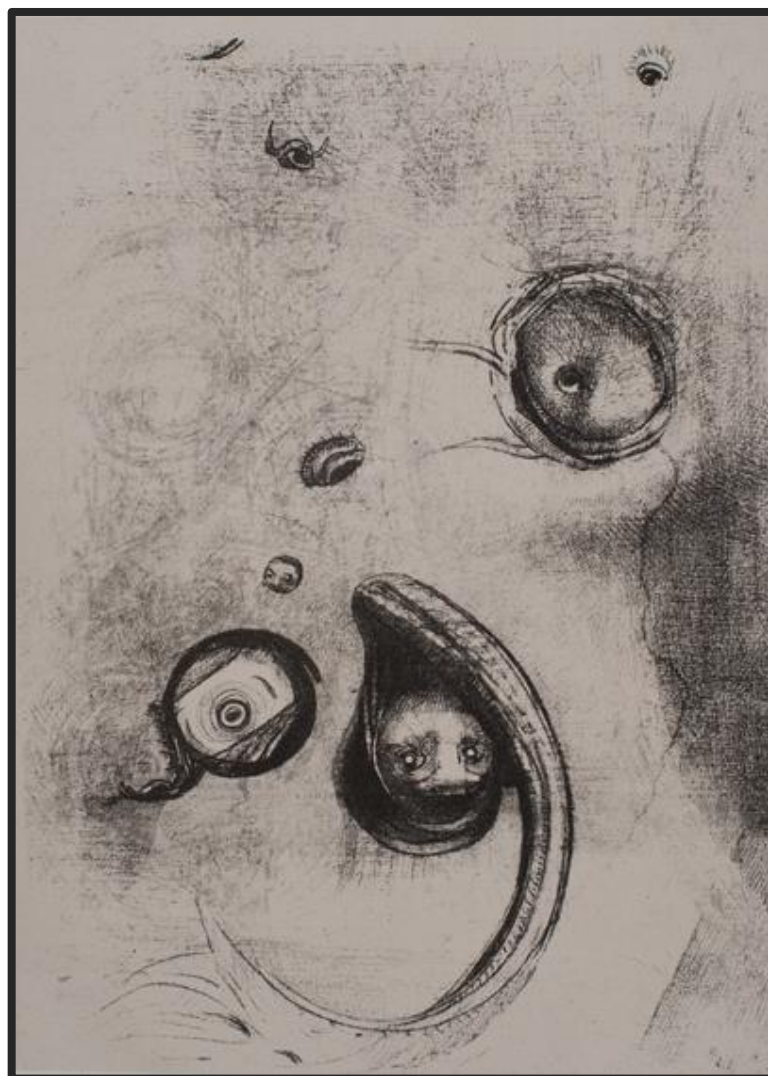


Image location: Cambridge, Fitzwilliam Museum



Plate 53.  
*Araignée (Spider)*

Odilon Redon (1840-1916)

1887

lithograph

27.8 x 21.6 cm



Image location: London, © The Trustees of the British Museum [1888,0619.153]

Plate 54.

*La Bataille de os (The Battle of the Bones)*

Odilon Redon (1840-1916)

1881

charcoal drawing

44.7 x 37.3 cm

Plate 55.

*Frolicking Skeletons*  
(detail)

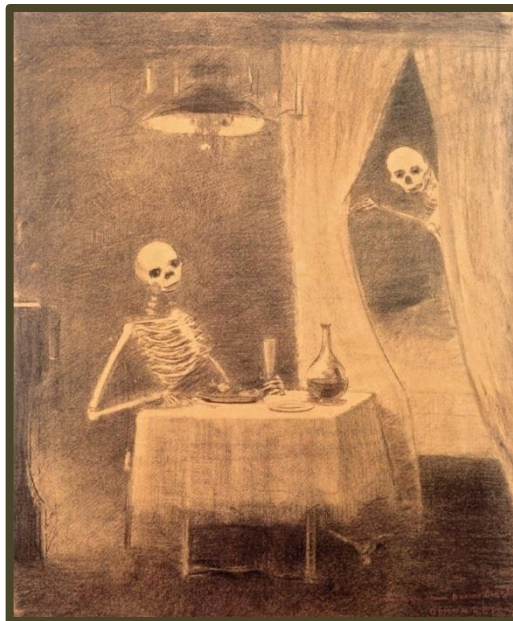
Kawanabe Kyōsai

1870s-1880s

hanging scroll, ink on silk

(dimensions unknown)

a.



b.



Image location: a. Otterlo, Kröller-Müller Museum; b. Richard Harris Collection

Plate 56.  
*Hantise (Obsession)*

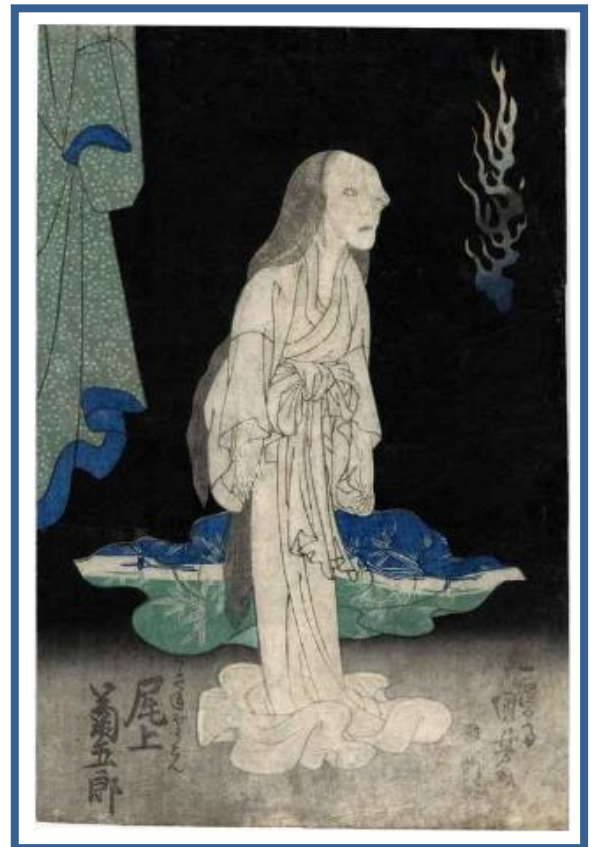
Odilon Redon (1840-1916)  
1894  
lithograph  
36.1 x 22.9 cm



56.

Plate 57.  
*Onoe Kikugorō III as the ghost of Oiwa in Irohagana Yotsuya Kaidan*

Utagawa Kuniyoshi (1797-1861)  
1833  
woodblock print on paper  
24.8 x 37.5 cm



57.

Image locatoin: 56. Washington, DC, National Gallery of Art [1951.10.456]; 57. Lyon Collection [<http://www.woodblockprints.org/>]



Plate 58.  
Illustration of a *yūrei*,  
Hokusai *Manga* Vol. 13: 59

Katsushika Hokusai (1760-1849)  
1849  
woodcut on paper  
15.9 x 22.5 cm

58.



Plate 59.  
*Blossoming (Écllosion)*,  
No. 1, *Dans le rêve (In the Dream)*

Odilon Redon (1840-1916)  
1879  
lithograph on paper  
32.8 x 25.7 cm

59.



Image location: 58. Paris, Bibliothèque Nationale, Department of Prints & Photography;  
59. New York, The Museum of Modern Art



Plate 60.

*Le Polype difforme flottait sur les rivages, sorte de cyclope souriant et hideux (The deformed polyp floated on the shores, a sort of smiling and hideous Cyclops),*  
*No. 3, Les Origines (The Origins)*

Odilon Redon (1840-1916)

1883

lithograph

21.3 x 20 cm

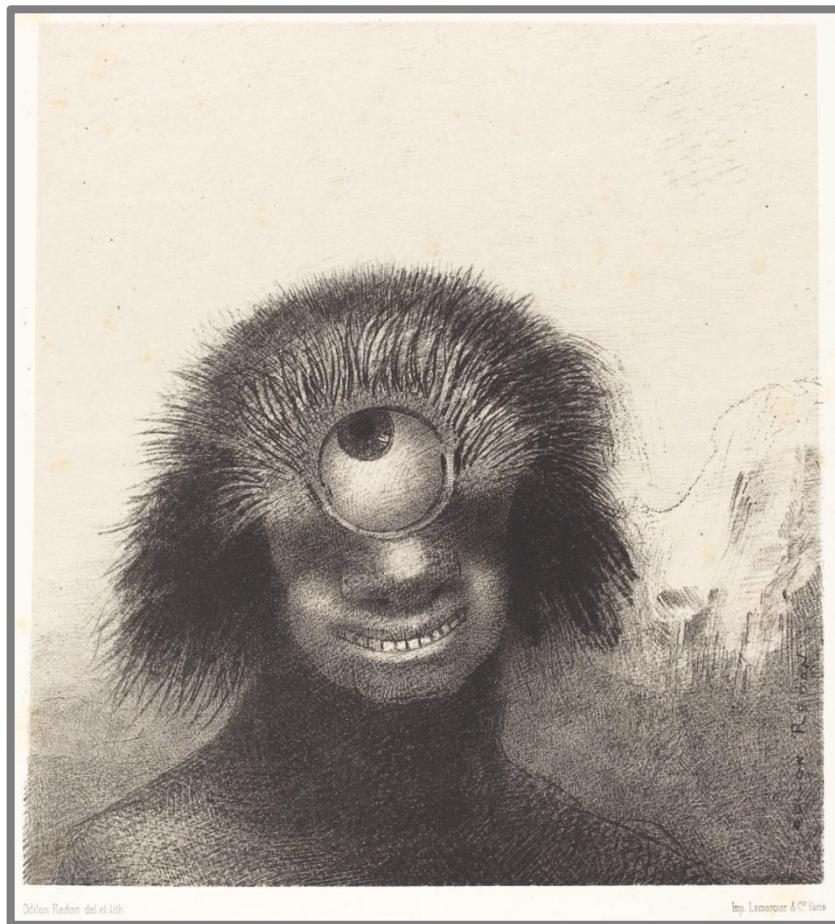


Image location: Washington, DC, National Gallery of Art [1951.10.460]

Plate 61a.

Illustration of a *hitosume-nyūdō*,  
*Hyakkai-zukan* (*The Illustrated Volume of 100 Demons*)

Sawaki Suushi

1737

emaki (picture scroll)

(dimensions unknown)



Image location: Kyoto, International Research Center for Japanese Studies

Plate 61b.

*Kaseneno bobokon (Pussy Demon of Kasane),  
Kaidan hyakki yagyō (Ghost Stories: The Night Parade of One  
Hundred Demons)*

Utagawa Kuniyoshi (1797-1861)

1836

woodcut on paper

13 x 9 cm



Image location: Kuniyoshi Project

Plate 62.

*After Reading a story by Edgar Poe / The Eye*

Odilon Redon (1840-1916)

1883

charcoal on paper

40.2 x 33.3 cm



Image location: Santa Barbara, Santa Barbara Museum of Art



Plate 63.

*L'Oeuf (The Egg)*

Odilon Redon (1840-1916)

1885

lithograph

29.3 x 22.5 cm

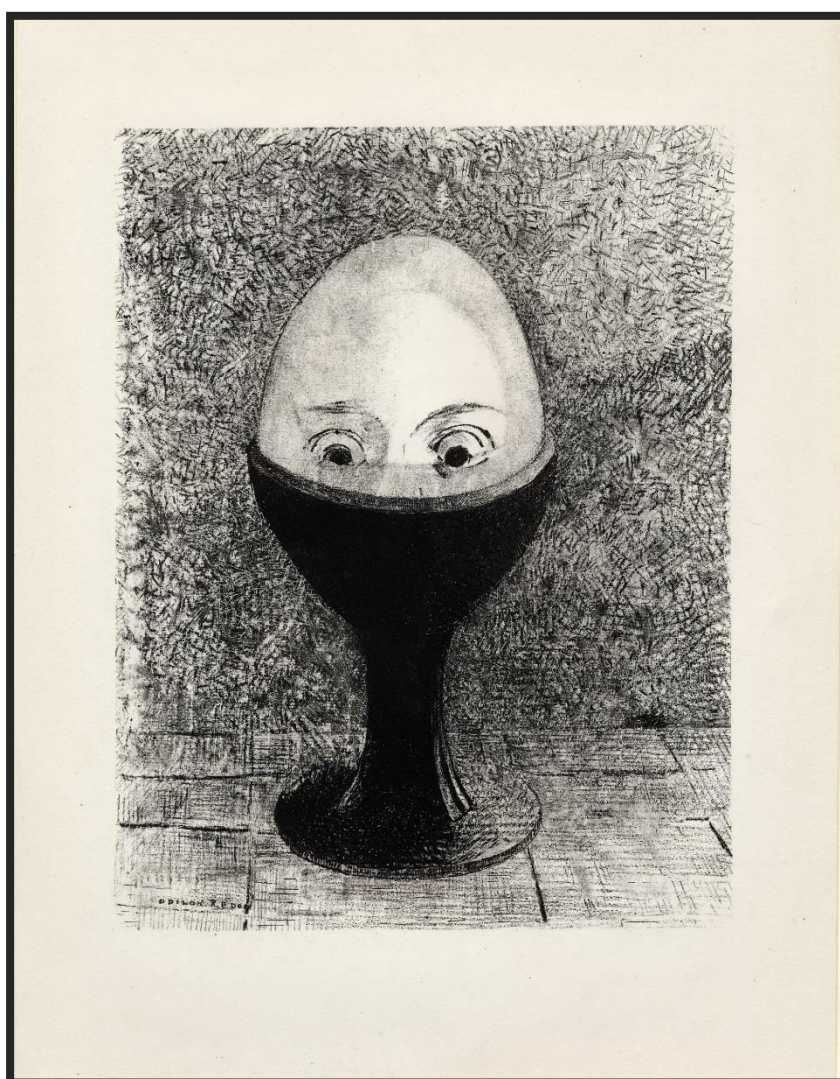


Image location: London, © Trustees of the British Museum [1949,0411.3488]

Plate 64.

a. *Sagifuchi ni Ippon'ashi*,  
detail of square seventeen from *Mukashi banashi Bakemono*  
*Sugoroku* (Old Monster Yarns Backgammon)

Utagawa Yoshikazu

1858

woodcut printed board game, ink and color on paper

52 x 81.3 cm

b. *Kasa Ippon-ashi* (One Legged Umbrella Demon)

Gosotei Hirosada (c. 1810-1864)

1855

Chūban



a.



b.

Image location: a. Oregon, USA, Jordan Schnitzer Museum of Art [1969:37.92]; b. Private Collection. Formerly: Somerset, UK, Toshidama Gallery



Plate 65.

*Cactus Man*

Odilon Redon (1840-1916)

1881

charcoal

49.5 x 37.5 cm



Location: USA, The Ian Woodner Family Collection

Plate 66.

*Neko no ateji (Cat Homophones)*

Utagawa Kuniyoshi (1797-1861)

1842

woodblock print on paper

36 x 25 cm



Image location: Kuniyoshi Project



Plate 67.

*Different peoples inhabit the countries of the ocean,  
La Tentation de Saint-Antoine, Paris*

Odilon Redon (1840-1916)

1896

lithograph on paper

30.8 x 23 cm

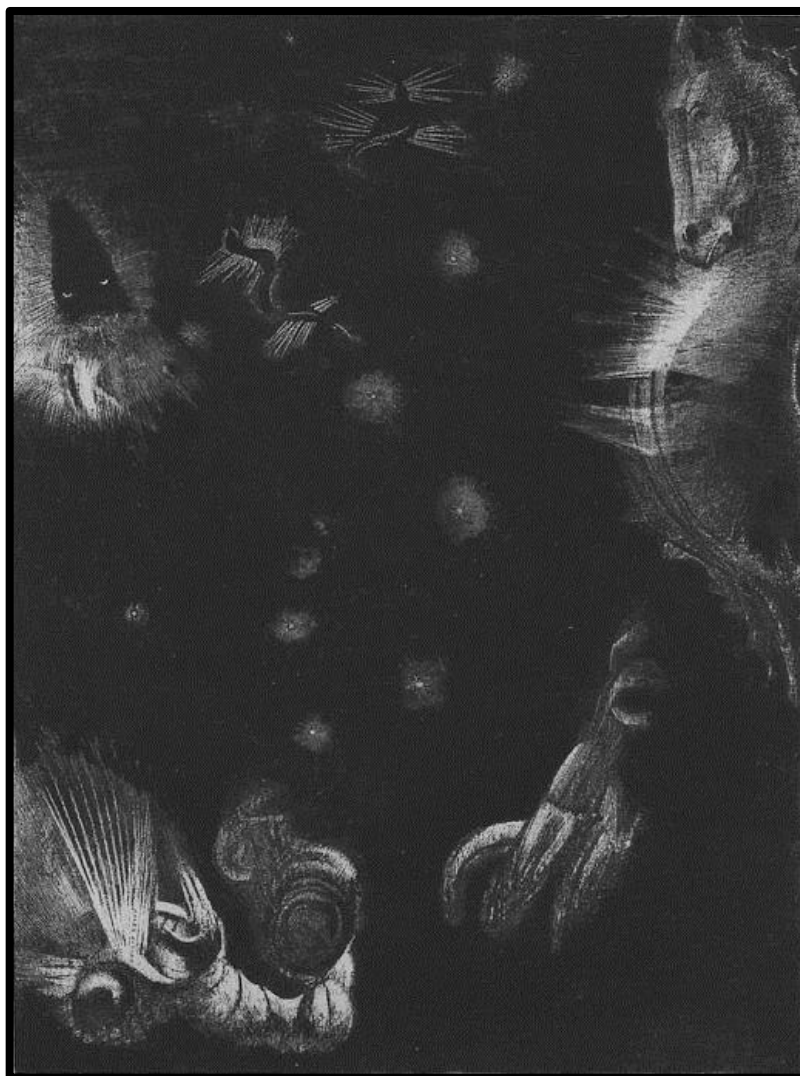


Image location: Cambridge, Fitzwilliam Museum

Plate 68.

*The Little One Is Dreaming, Étude*  
(study)

Paul Gauguin (1848–1903)

1881

oil on canvas

60 x 74 cm



Image location: Copenhagen, Ordrupgaard

Plate 69.

*The Yellow Christ*

Paul Gauguin (1848-1903)

1889

oil on canvas

92.1 x 73.3 cm

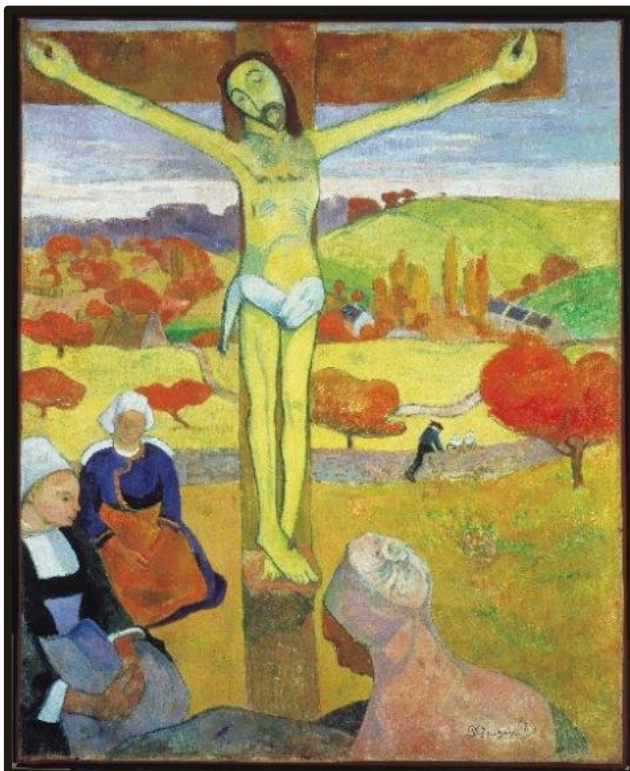
Plate 70.

*Christ from the Trémalo chapel, Pont Aven*

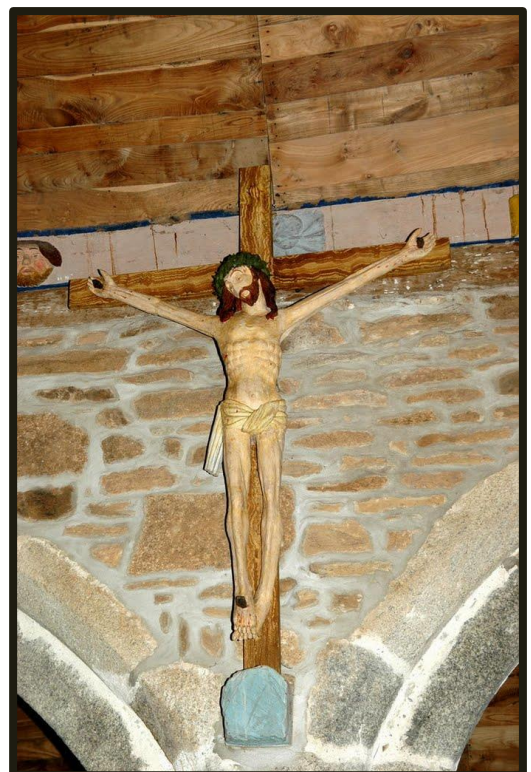
(artist unknown)

painted wood carving

(details unknown)



69.



70.

Image location: 69. New York, Albright-Knox Art Gallery; 70. Pont Aven, Trémalo chapel



Plate 71.  
*Soyez mystérieuses (Be Mysterious)*

Paul Gauguin (1848-1903)  
1890  
bas-relief, oil on wood  
73 x 95 cm



Image location: Paris, Musée d'Orsay [RF 3405]



Plate 72.  
Still Life with Horse's Head

Paul Gauguin (1848-1903)

1886

oil on canvas

49 x 38.5 cm

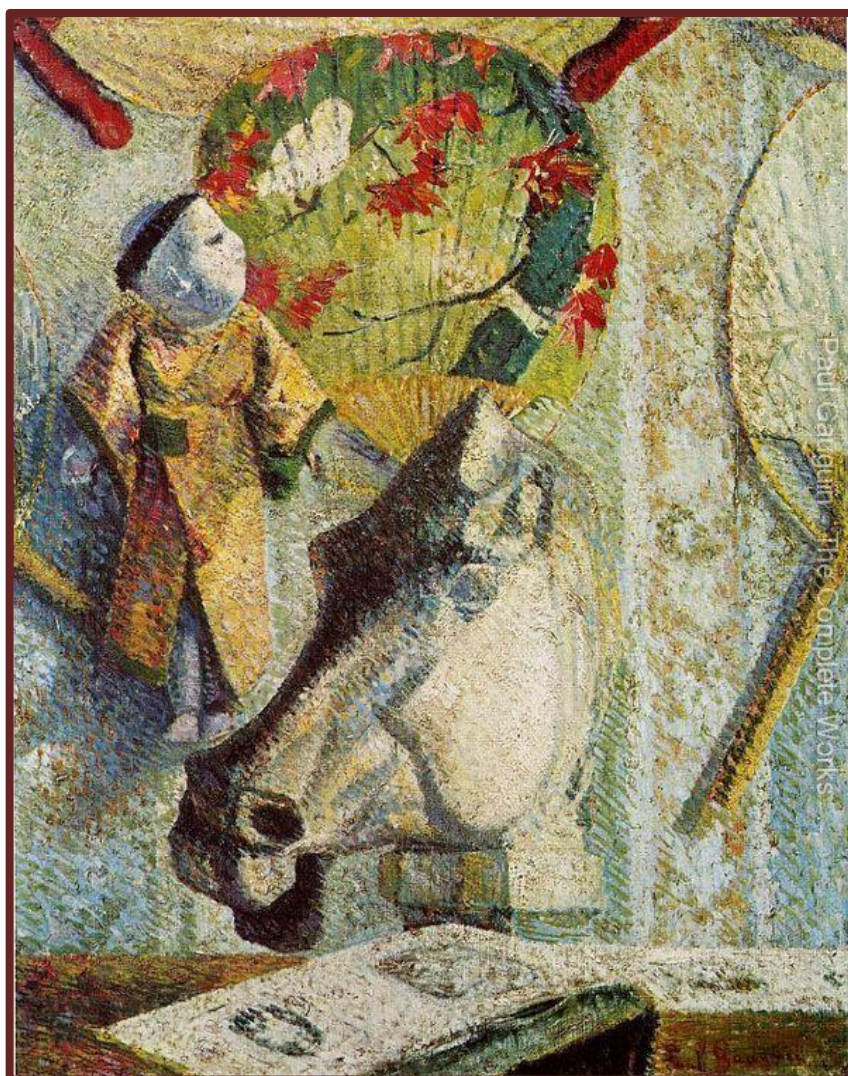


Image location: Tokyo, Bridgestone Museum of Art, Ishibashi Foundation

Plate 73.

*Nature morte à l'estampe japonaise (Still Life with Japanese Print)*

Paul Gauguin (1848-1903)

1888

oil on canvas

31.7 x 55.5 cm

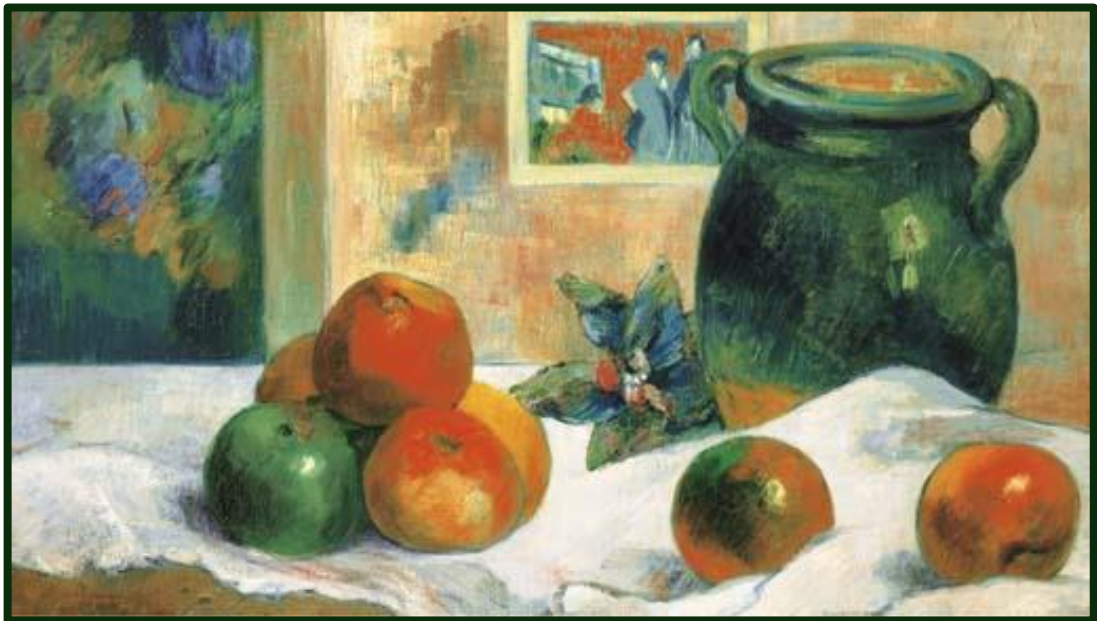


Image location: New York, Christie's Impressionist and Modern Art (Evening Sale), 7<sup>th</sup> May 2003

Plate 74.

*Nature morte à l'estampe japonaise (Still Life with Japanese Print)*

Paul Gauguin (1848–1903)

1889

oil on canvas

72.4 x 93.7 cm



Image location: Tehran, Museum of Contemporary Art



Plate 75.

*Ichikawa Kodanji playing the Hunter Nagohe*

Utagawa Yoshiiku (1833-1904)

1864

woodblock print on paper

(dimensions unknown)



Image location: Frome, Toshidama Gallery



Plate 76.

*The Schuffenecker Family / Schuffenecker's Studio*

Paul Gauguin (1848-1903)

1889

oil on canvas

73 x 92 cm

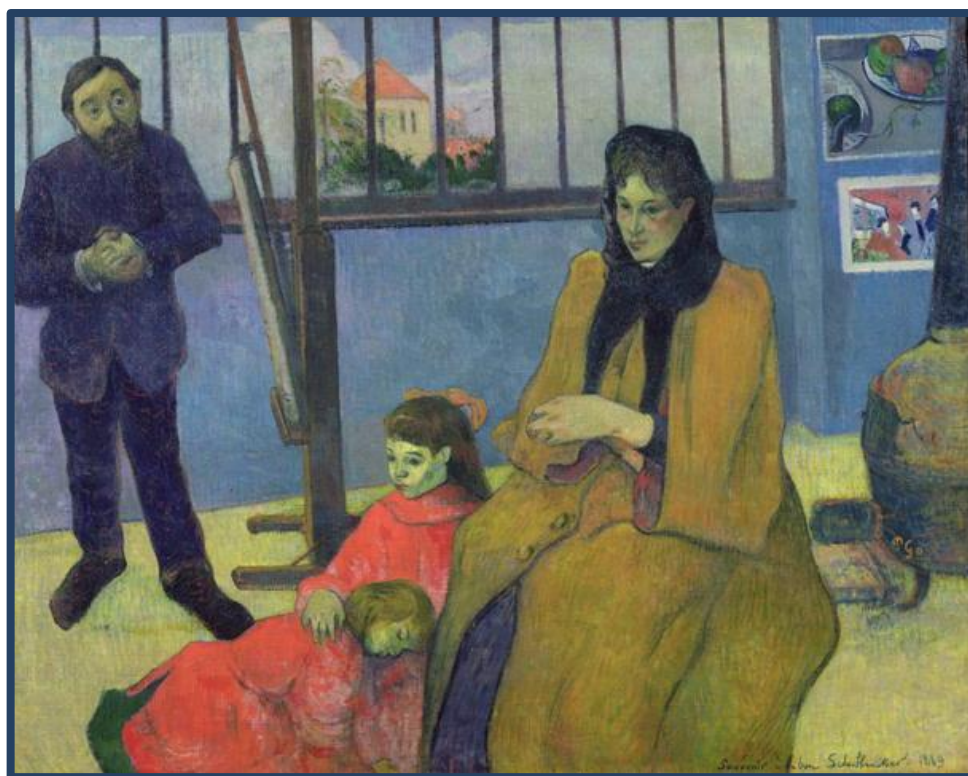


Image location: Paris, Musée d'Orsay [RF 1959 8]

Plate 77.

*Vision After the Sermon: Jacob Wrestling with the Angel*

Paul Gauguin (1848-1903)

1888

oil on canvas

74.4 x 93.1 cm

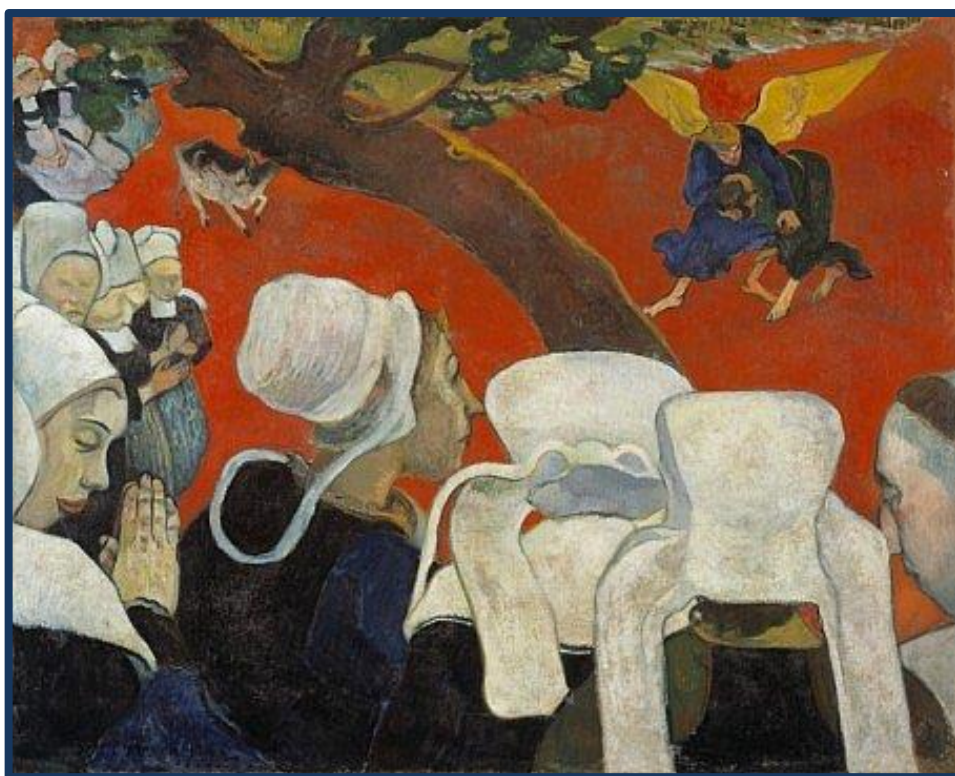


Image location: Edinburgh, National Galleries of Scotland

Plate 78.

*Hodogaya, Totsuka, Fujisawa and Hiratsuka,  
Tokaido gojisan-eki yon shuku meisho (Fifty-three Stations of the  
Tōkaidō Road)*

Utagawa Kuniyoshi (1797-1861)

c. 1835

ōban yoko-e

25.5 x 37.2 cm



Image location: London, © Trustees of the British Museum [2008,3037.03304]



Plate 79.  
Still Life with Onions, Beetroot and a Japanese Print

Paul Gauguin (1848-1903)  
1889  
oil on canvas  
40.6 x 52.1 cm

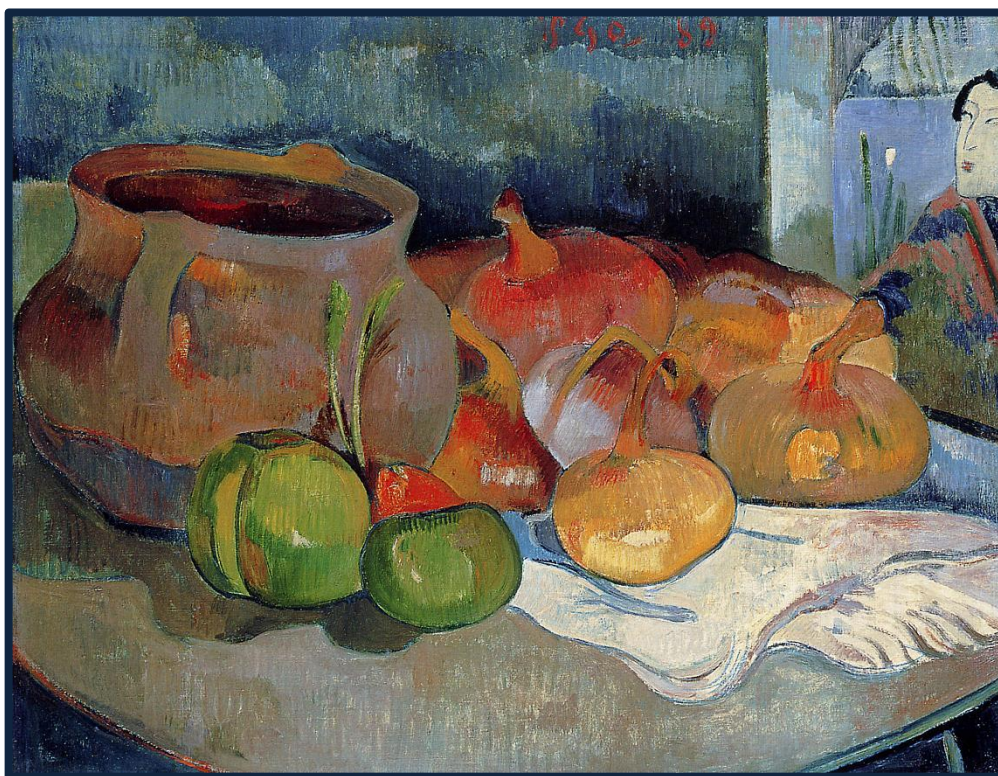


Image location: Private collection



Plate 80.  
*Warai Hannya,*  
*Hyaku Monogatari*

Katsushika Hokusai (1760-1849)  
c. 1830  
woodblock print on paper  
(dimensions unknown)



Image location: London, © Trustees of the British Museum [1921,0511,0.14]

Plate 81.  
Self-Portrait

Paul Gauguin (1848-1903)  
1889  
oil on wood  
79.2 x 51.3 cm

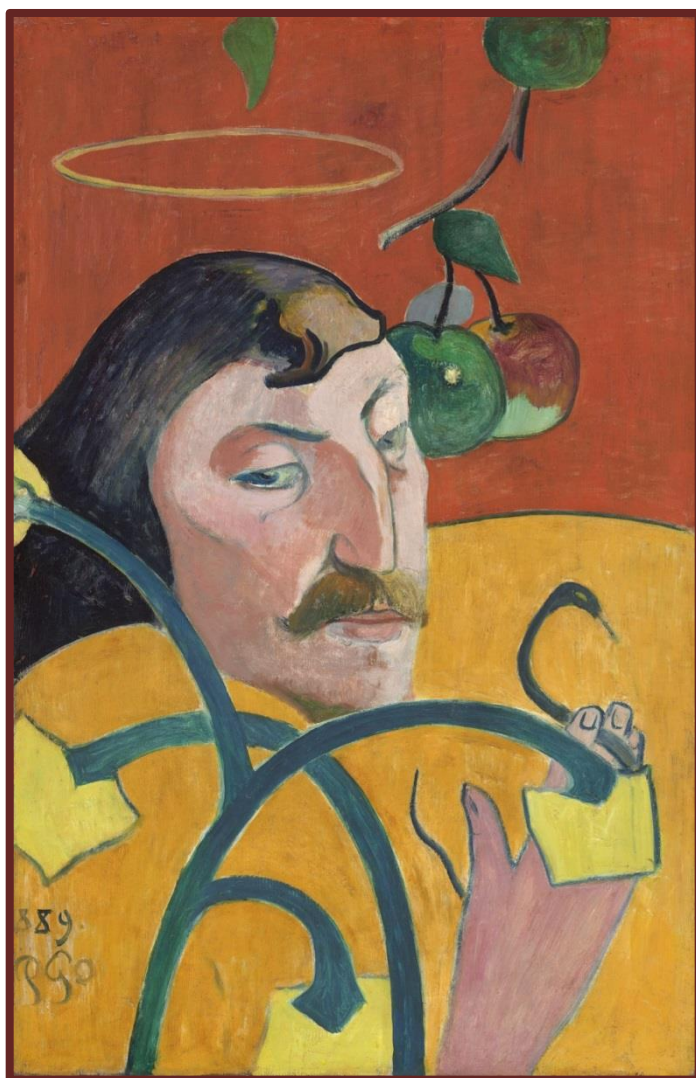


Image location: Washington DC, The National Gallery of Art

Plate 82.

*Soyez amoureuses vous serez heureuses (Be In Love and You Will Be Happy)*

Paul Gauguin (1848-1903)

1889

carved and painted linden wood

95 x 72 x 6.4 cm

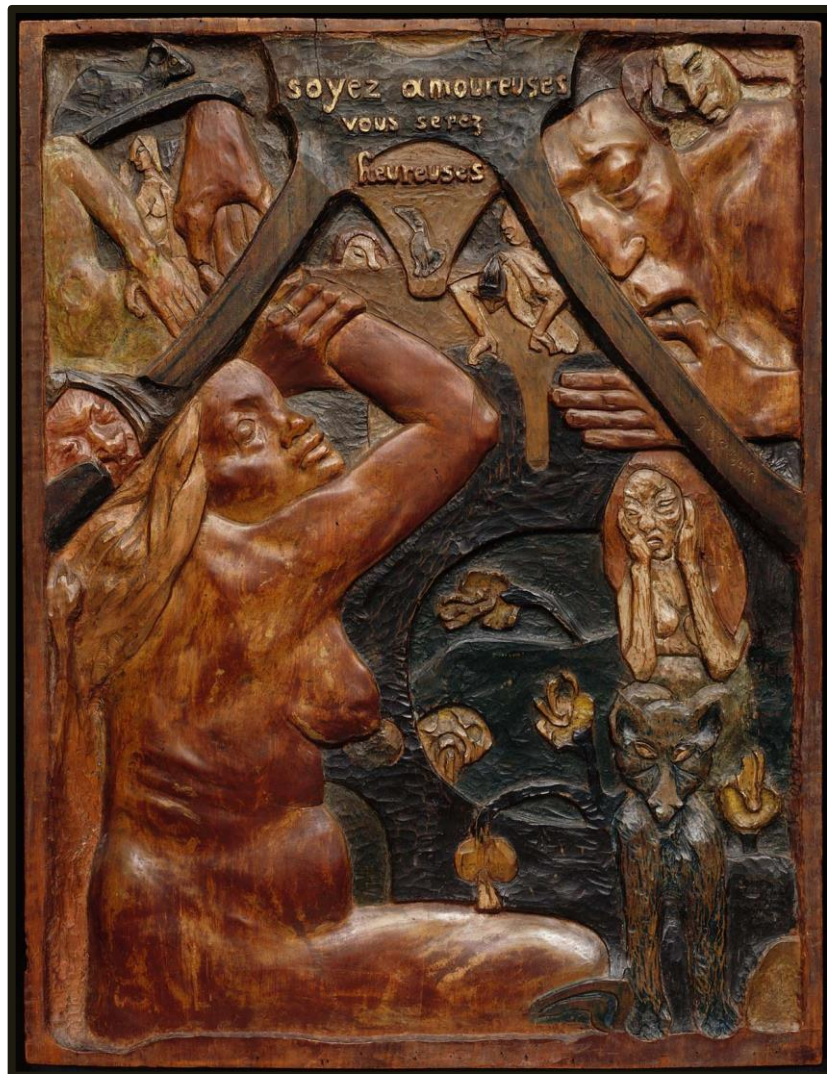


Image location: Boston, Museum of Fine Arts Boston [57.582]



Plate 83.

*Soyez mystérieuses (Be Mysterious),*  
*Maison du jour (House of Pleasure)*

a. bottom left panel

b. all panels

Paul Gauguin (1848-1903)

1901-1902

bas-relief, polychromed sequoia wood

32 x 153 x 3 cm



a.



b.

Image location: Paris, Musée d'Orsay [RF 4290]



Plate 84.

*Head of a Young Girl*

Paul Gauguin (1848-1903)

1893-1894

Clay, varnished and heightened in places with dark red pigment

15.2 x 26 x 18 cm



Image location: Carmen Thyssen-Bornemisza Collection on deposit at Madrid, Museo Thyssen-Bornemisza [CTB.DEC99.36]

Plate 85.  
*The Loss of Virginity*

Paul Gauguin (1848–1903)  
1890-1891  
oil on canvas  
90.2 x 130.2 cm



Image location: Norfolk (VA), Chrysler Museum of Art [71.510]

Plate 86.

*The actor Nakamura Shikan as Minamoto (no) Kurō Kitsune*

Kinusada

1867

ōban nishiki-e

37.2 x 25.3 cm



Image location: van Rappard-Boon, van Gulik & van Bremen-Ito, 2006: 227, pl. 315



Plate 87.

*Kusunoha-gitsune doji ni wakaruru no zu* (The Fox-Woman  
Kusunoha Leaving Her Child),  
*Shinkei sanjurokkaisen* (New forms of thirty-six ghosts)

Tsukioka Yoshitoshi (1839-1892)

1890

woodblock print on paper

36.9 x 25.1 cm



Image location: Claremont, California, Ruth Chandler Williamson Gallery, Scripps College  
[93.3.41]



Plate 88.  
*Princess Yaegaki*

Utagawa Kuniyoshi (1797–1861)  
19th century  
woodblock print on paper  
36.8 x 25.4 cm



Image location: New York, Metropolitan Museum of Art

Plate 89.

*Otome (Maiden)*

*Waken nazorae Genji (Japanese and Chinese Comparisons for the Chapters of the Genji)*

Utagawa Kuniyoshi (1797-1861)

1855

ōban tate-e

36.9 x 25.9 cm



Image location: London, © Trustees of the British Museum [2008,3037.06303]

Plate 90.

a. *Tahitian Woman with Evil Spirit*  
(recto)

Paul Gauguin (1848-1903)  
c. 1900  
oil transfer drawing.  
(dimensions unknown)

*Tahitian Woman with Evil Spirit*  
(verso)

Paul Gauguin (1848-1903)  
c. 1900  
graphite and colored pencil  
(dimensions unknown)

b. *Head with Horns & Tongan Young Woman Living in Fiji*

Paul Gauguin (1848-1903)  
1895-97.  
wood with traces of paint  
(dimensions unknown)

(photographer unknown)  
c. 1900.  
photograph  
(dimensions unknown)

a.



b.



Image location: a. New York, The Museum of Modern Art; b. New York, The Museum of Modern Art; Los Angeles, The J. Paul Getty Museum; London, The British Museum



Plate 91.

*Sadanobu-ko yoru kyuchu ni kai o osoreshimu no zu* (*Sadanobu Threatening a Demon in the Palace at Night*),  
*Shinkei sanjurokkaisen* (*New forms of thirty-six ghosts*)

Tsukioka Yoshitoshi (1839-1892)

1889

woodblock print on paper

36.8 x 25.2 cm



Image location: Indiana, Indianapolis Museum of Art



Plate 92.

*Spectres (Ghosts)* [Musée du Louvre title]

*Noa Noa* (sketchbook)

Paul Gauguin (1848-1903)

c. 1890s

page from a sketchbook

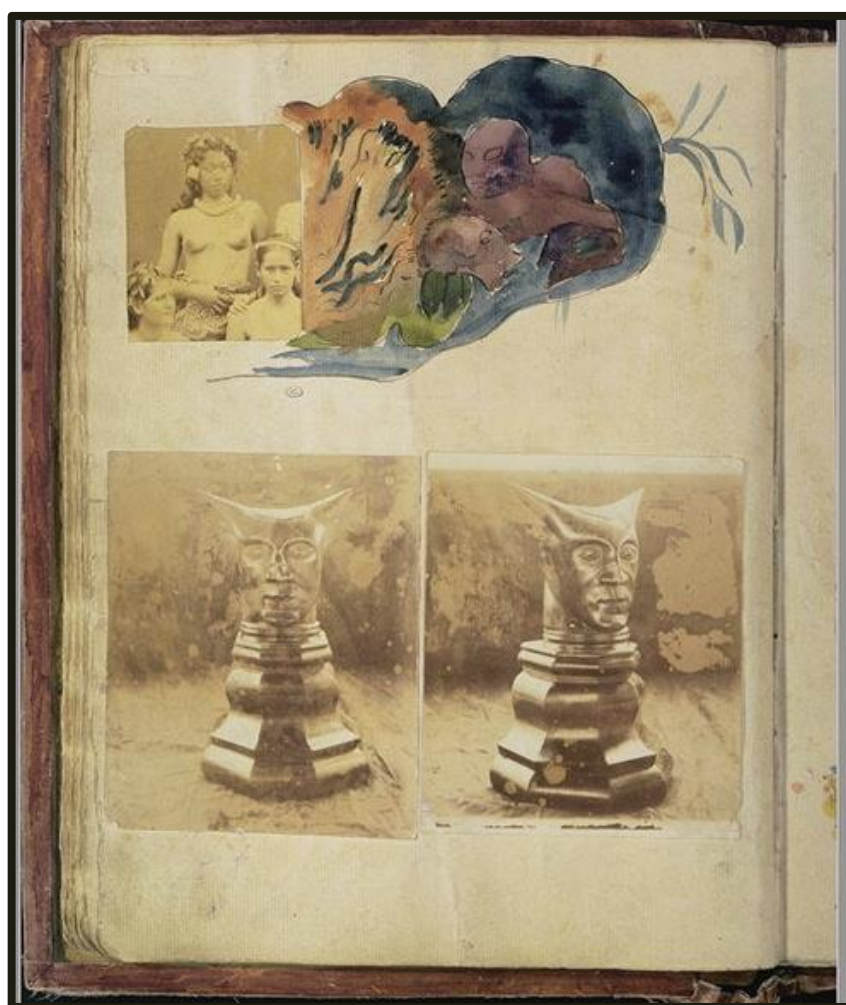


Image location: Paris, Département des Arts graphiques, Musée du Louvre [RF 7259, 60]

Plate 93.

a. *Notes manuscrites (Handwritten notes)* [Musée du Louvre title]  
*Noa Noa* (sketchbook)

b. *Personnage japonais (Japanese character)* [Musée du Louvre title]  
*Noa Noa* (sketchbook)

Paul Gauguin (1848-1903)

c. 1890s

pages from a sketchbook



a.

b.

Image location: Paris, Département des Arts graphiques, Musée du Louvre [RF 7259, 230; RF 7259.71]

Plate 94.

a. *Notes manuscrites et copies d'après Delacroix (Handwritten notes and copies after Delacroix)* [Musée du Louvre title],  
*Noa Noa*

Paul Gauguin (1848-1903)

c. 1890s

page from a sketchbook

b. *Fujiwara no Sanekata and Sparrows*,  
*Manga*

Katsushika Hokusai (1760-1849)

1815-1865

20.3 x 14 cm

woodcut on paper



a.



b.

Image location: a. Paris, Département des Arts graphiques, Musée du Louvre [RF 7259, 235] Image location: b. New York, Ronin Gallery



Plate 95.

*Noa Noa & Nanso Satomi hakken den*

a. Paul Gauguin (1848-1903)

c. 1890s

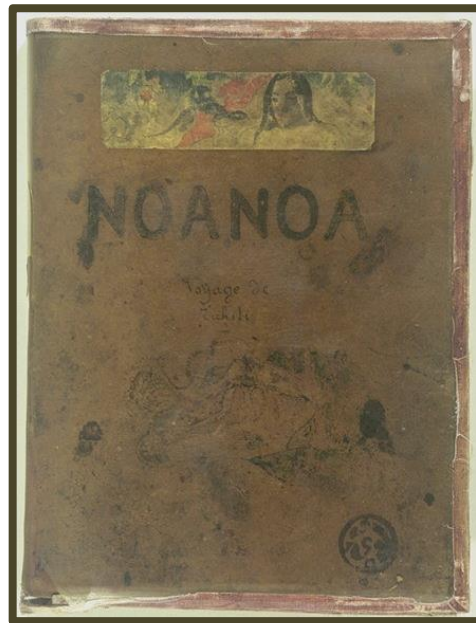
front cover from a sketchbook

b. Kyokutei Bakin, Yanagawa Shigenobu, et al.

1814 to 1841

22.8 x 16 cm

front cover



a.



b.

Image location a.: Paris, Département des Arts graphiques, Musée du Louvre [RF 7259, 1]; b.: Japan, National Diet Library



Plate 96.  
Portrait of Jacob Meyer de Haan

Paul Gauguin (1848-1903)

1889

oil on wood

79.6 x 51.7 cm

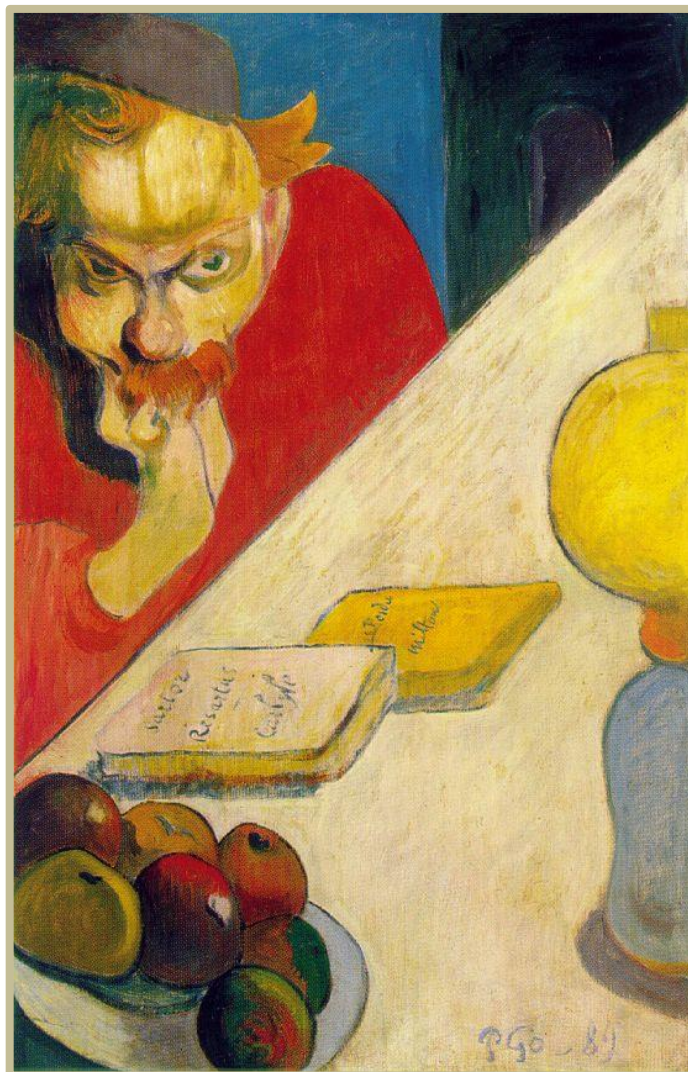
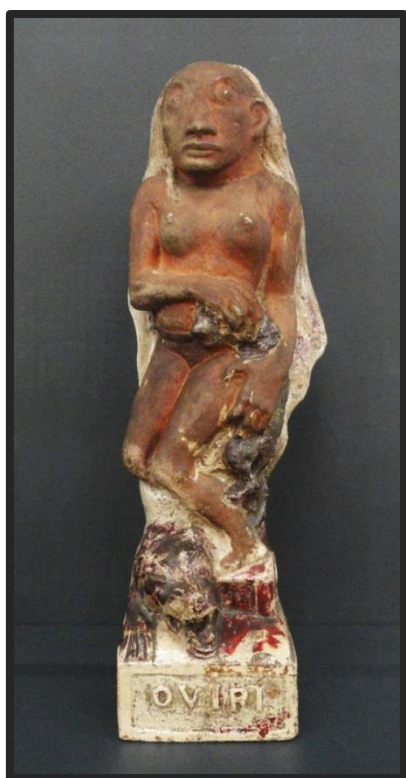


Image location: New York, Museum of Modern Art

Plate 97.  
*Oviri*  
(front & back)

Paul Gauguin (1848-1903)  
c. 1894  
Medium: Stoneware  
75 x 19 x 27 cm



a.



b.

Image location: Paris, © RMN-Grand Palais (Musée d'Orsay)

Plate 98.

*Manao Tupapau (The Spirit of the Dead Watches)*

Paul Gauguin (1848 - 1903)

1892

oil on canvas

73 x 92 cm

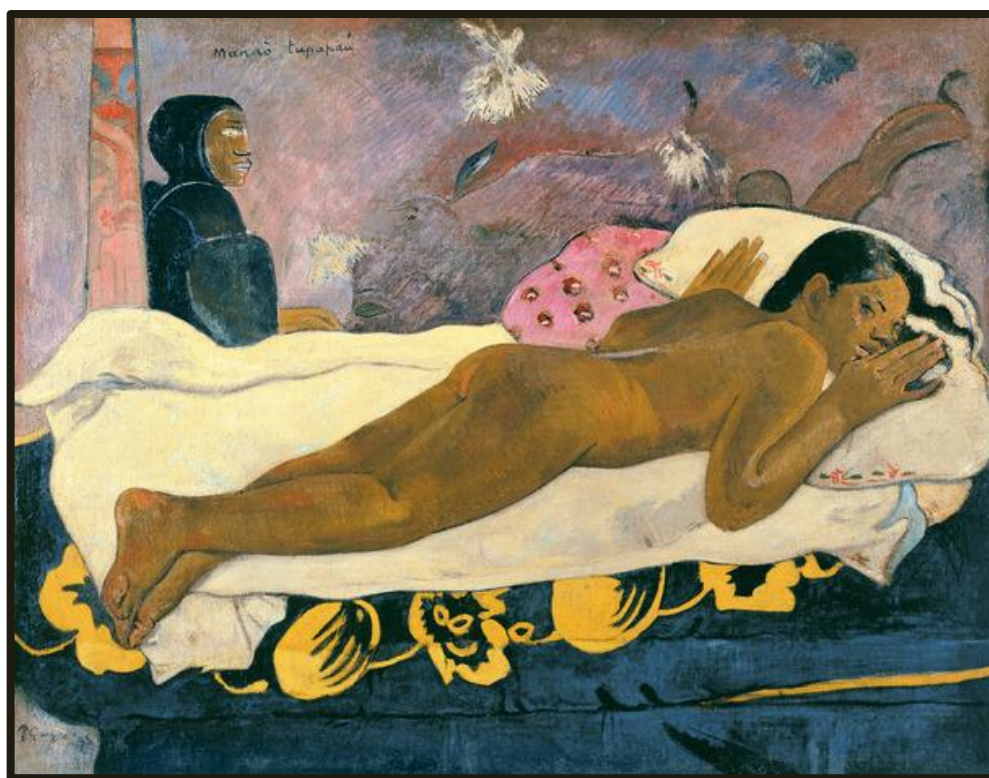


Image location: New York, Albright-Knox Art Gallery

Plate 99.

Poster for Bing Exhibition in London (1889)

Frank Brangwyn (1867-1956)

1899 (printed)

colour lithograph on paper

(dimensions unknown)

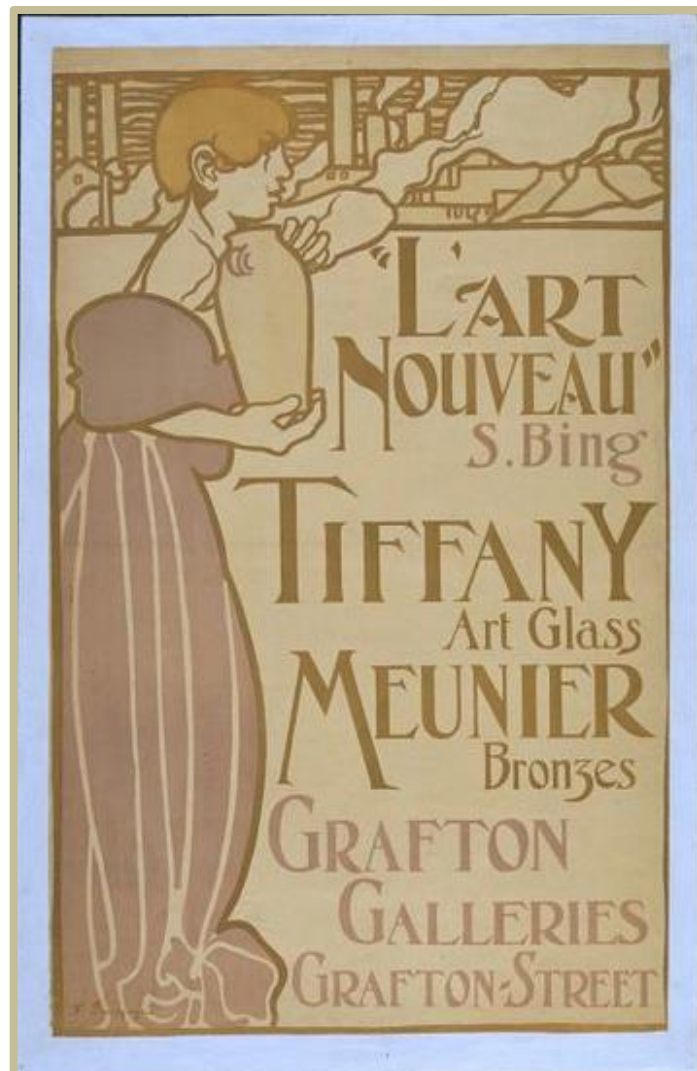


Image location: London, Victoria & Albert Museum [E.450-1965]



Plate 100.  
Belt buckle, with lily pads and blossom

Henri Vever  
gold, enamel and diamond  
c.1900  
(dimensions unknown)



Image location: Boston, Museum of Fine Arts Boston

## Plate 101.

### a. *Assyrienne* (comb)

Henri and Paul Vever; Eugène Grasset (1845-1917)

c. 1900

carved tortoiseshell, gold, enamel and sapphires  
(dimensions unknown)

### b. *Apparitions* (brooch)

Henri and Paul Vever; Eugène Grasset (1845-1917)

1900

Repoussé gold; translucent and opaque cloisonné enamel; ivory; topaz cabochons  
6.2 x 3.9 x 1.3 cm

a.



b.



Image location: b. Paris, © RMN-Grand Palais (Musée d'Orsay)

Plate 102.  
*Un Autre Monde*  
(frontispiece)

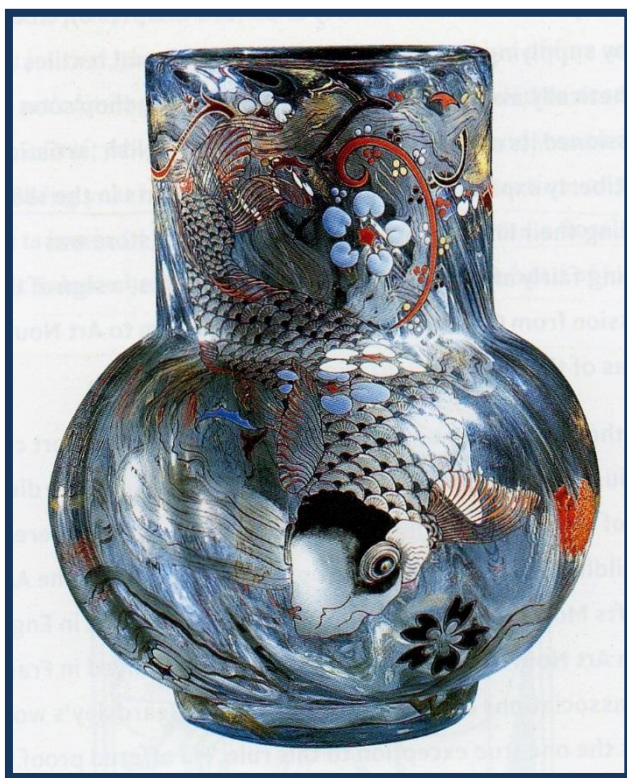
J. J. Grandville (1803-1847)  
1843-1844  
(details unknown)



Image location: Paris, Bibliothèque Nationale

Plate 103.  
*Vase La Carpe*

Émile Gallé (1846-1904)  
1878  
glass  
(dimensions unknown)



view a.



view b.



Plate 104.

*Saito Oniwakamaru, "Young Devil Child" (Benkei) fighting the giant carp in the waterfall of Bishamon ga taki, Ikkai zuihitsu (Essays by Yoshitoshi)*

Tsukioka Yoshitoshi (1839-1892)

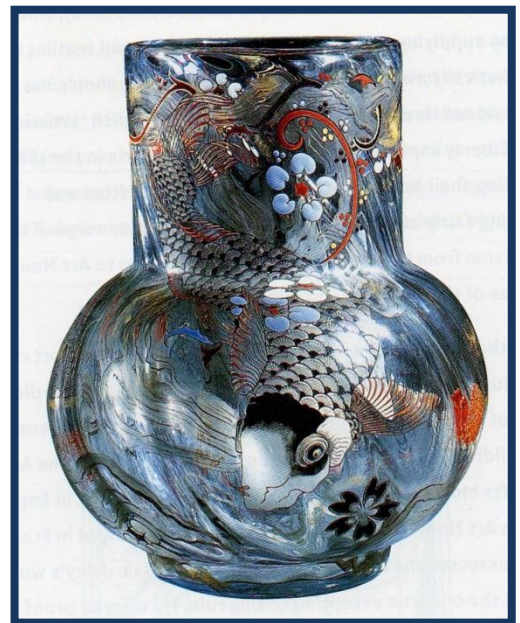
c. 1872

woodblock print on paper

dimensions unknown



104.



103a.

Plate 105.  
*Gyoran Kannon*

Katsushika Hokusai (1760-1849)

1849

ink and paper

63.5 x 36.2 cm



105.



103b.

Plate 106.  
Carp Vase

Eugène Rousseau (1827-1891)  
1878-1884  
layered and engraved glass



Image location: Baltimore, The Walters Art Museum [47.384]



Plate 107.

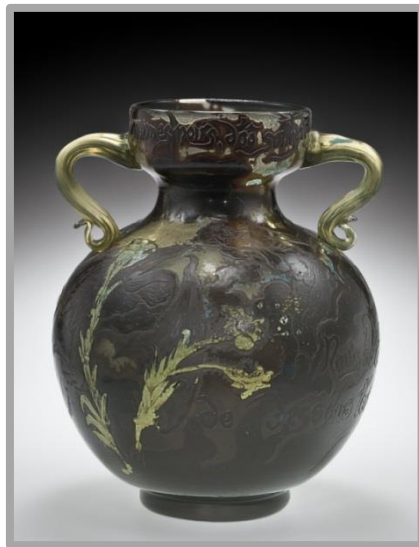
*Les Hommes Noirs (The Dark Men)*

Émile Gallé (1846-1904) & Victor Prouvé (1858-1943)

c. 1900

blown and cased glass, cut, acid-etched, engraved, polished, applied silver stain

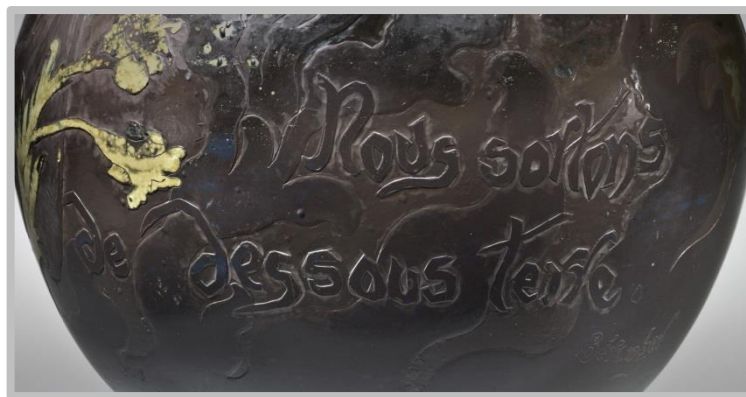
38.1 x 32.1 cm



a.



b.



c.

Image location: Corning, The Corning Museum of Glass [2011.3.1]



Plate 108.  
*Gaki Zoshi (Stories of Hungry Ghosts)*

(artist unknown)  
 12<sup>th</sup> century  
 emaki  
 26.8 x 138.4 cm

a.



b.



c.



Image location: Kyoto, Kyoto National Museum [AK229]

Plate 109.

a. *Gaki Zoshi* (*Stories of Hungry Ghosts*)  
(detail)

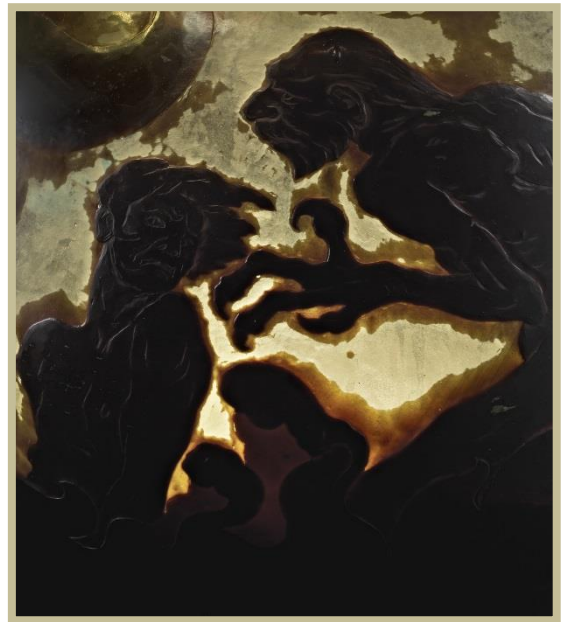
(artist unknown)  
12<sup>th</sup> century  
emaki  
26.8 x 138.4 cm



a.

b. *Les Hommes Noirs* (*The Dark Men*)  
(detail)

Émile Gallé (1846-1904) & Victor  
Prouvé (1858-1943)  
c. 1900  
blown and cased glass, cut, acid-etched,  
engraved, polished, applied silver stain  
38.1 x 32.1 cm



b.

Image location: a. Corning, The Corning Museum of Glass [2011.3.1]; b. Kyoto, Kyoto National Museum [AK229]

Plate 110.

a. *Vase with face*

Pierre-Adrien Dalpayrat (1844-1910)  
Alphonse Voisin-Delacroix (1857-1893)  
(maker)  
1892-93  
Stoneware  
64.8 x 42.9 x 40.6 cm

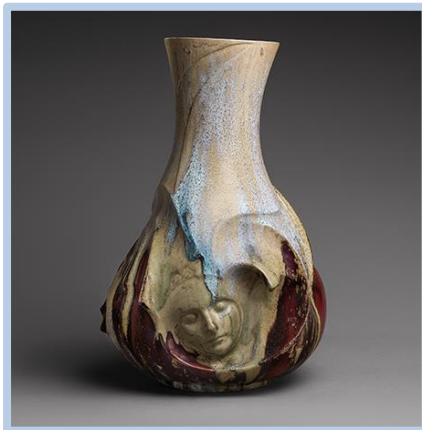
b. *The Opera of the Sea*

Margaret Macdonald Mackintosh (1864-1933)  
c. 1902  
inlaid gesso panel

c. *The Opera of the Sea*

Margaret Macdonald Mackintosh (1864-1933)  
c. 1910  
oil and tempera on sized paper  
144 x 160 cm

a.



b.



c.



Image location: a. New York, The Metropolitan Museum of Art; b. London, © The Fine Art Society [FAS71068]; c. New York, Museum of Modern Art [SC510.1953]



Plate 111.

*O Grave, where is thy Victory?*

Jan Theodore Toorop (1858 - 1928)

1892

drawing

60.4 x 75.3 cm

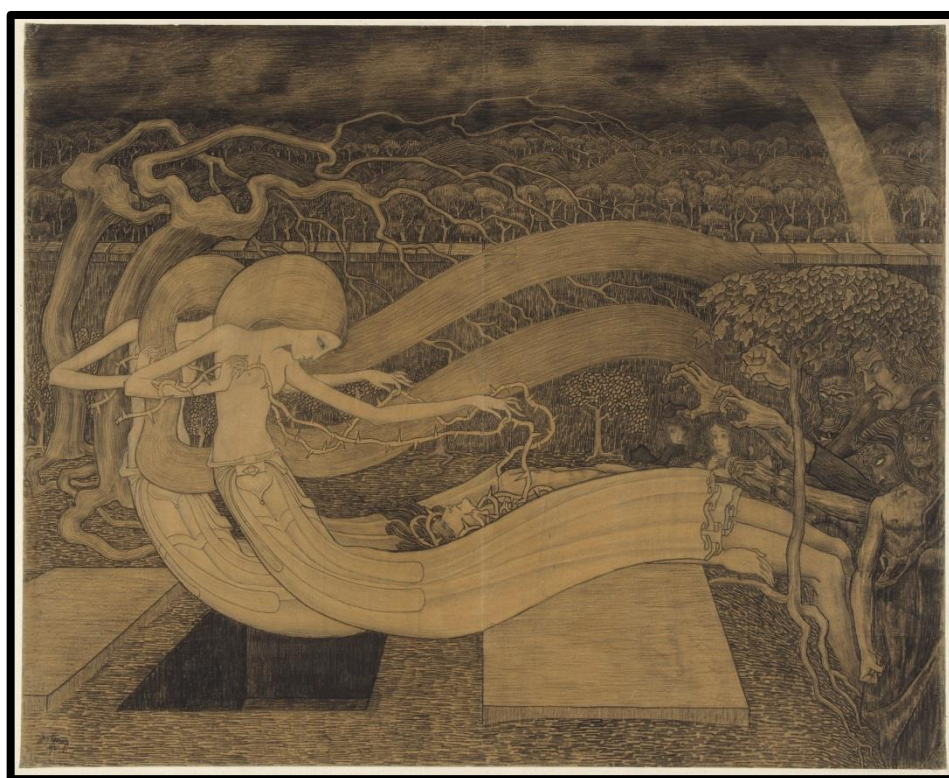


Image location: Otterlo, Rijksmuseum Kroller-Muller [RP-T-1960-243]



Plate 112.

*The Three Fiancées*

Jan Theodore Toorop (1858 - 1928)

1893

drawing on paper

78 x 98 cm



Image location: Otterlo, Kröller-Müller Museum

Plate 113.

*Fatality*

Jan Theodore Toorop (1858-1928)

1893

chalk and pencil on paper

60 x 75 cm



Image location: Otterlo, Rijksmuseum Kroller-Muller [JHG179920]

Plate 114.  
*Shipwreck*

Jan Theodore Toorop (1858-1928)  
1895  
ink and coloured chalk on paper  
17.2 x 28.5 cm

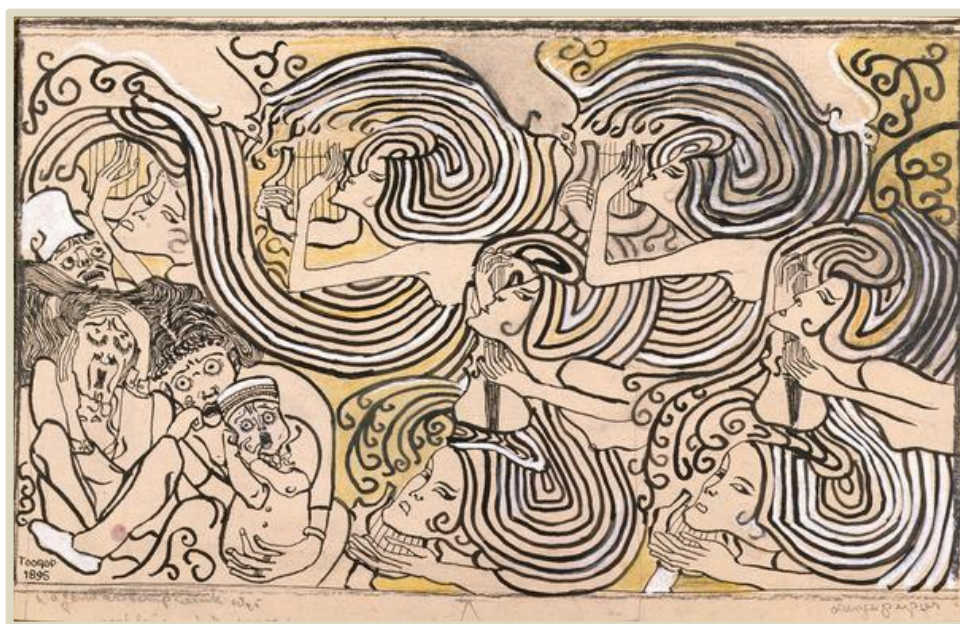


Image location: Private Collection



Plate 115.  
*Satan's Treasures*

Jean Delville (1867-1953)  
1895  
oil on canvas  
338 x 368 cm



115.

Plate 116.  
*The Dream of the Fisherman's Wife*

Katsushika Hokusai (1760-1849)  
c. 1814  
woodcut print on paper



116.

Image location: a. Brussels, Musées Royaux des Beaux Arts Belgium



Plate 117.  
*Still-life with Chinoiserie*

James Ensor  
1907  
oil on canvas  
61.5 x 75.2 cm

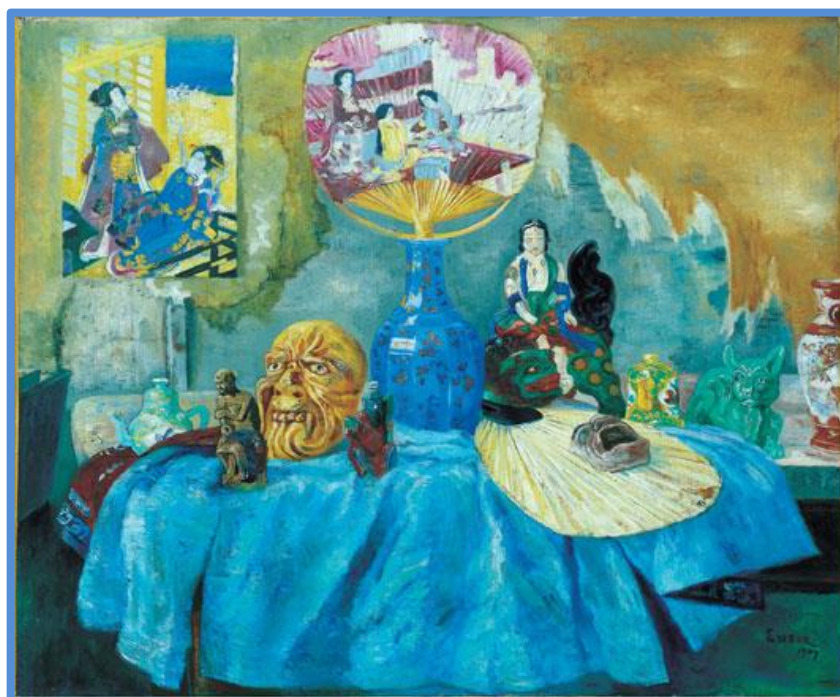


Image location: Deurie, Belgium, Museum Dhondt-Dhaenens

Plate 118.

*My Aunt Asleep Dreaming of Monsters*

James Ensor (1860-1949)

c. 1890.

pencil, conté crayon & coloured pencil on paper

21.9 x 30 cm



Image location: Brussels, Royal Museum of Fine Arts

Plate 119.

a. *The Haunted Furniture*

James Ensor (1860-1949)

1888

etching

12.4 x 17 cm

b. *The Haunted Fireplace (Mantelpiece)*

James Ensor (1860-1949)

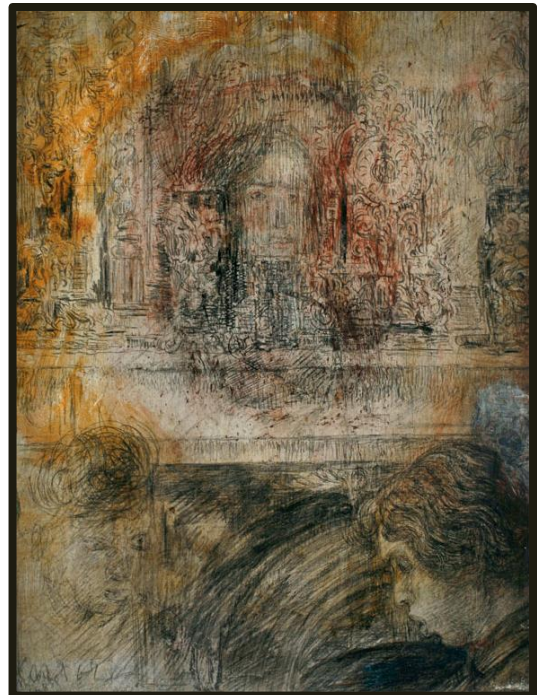
1888

crayon and coloured pencil on panel

24 x 16 cm



a.



b.

Image location: a. Antwerpen, Museum Plantin-Moretus, Print Room [PK.MP.01225]; b. Private collection; previously exhibited: New York, Museum of Modern Art

Plate 120.

*Sequelette regardant les chinoiseries (Skeleton Looking at Chinoiseries)*

James Ensor (1860-1949)

1885

oil on canvas

61 x 101 cm



Image location: Museum: Ghent, Museum of Fine Arts Ghent [1995-A]



Plate 121.

a. *Chinoiserie een, oude vrouw* (*Chinoiserie an old woman*)

James Ensor (1860-1949)

c. 1896

tekening (drawing)

17.5 x 22.3 cm

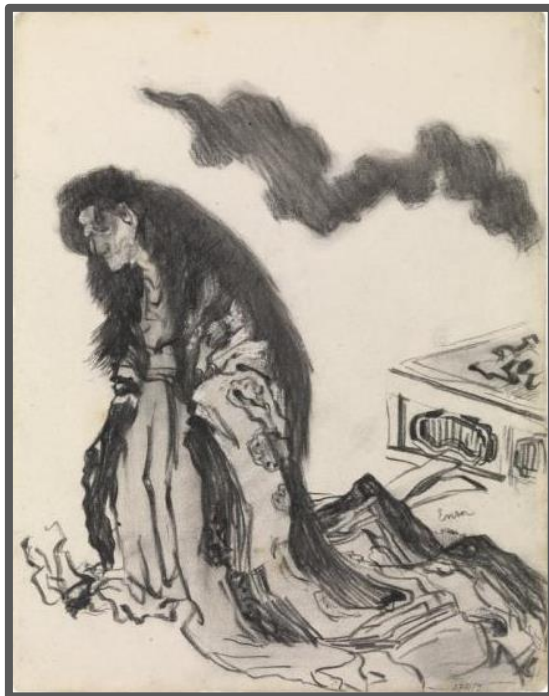
b. *Kiyohime Hidaka-gawa ni jitai to naru zu* (*Kiyome Changing into a Serpent at Hidaka River*),  
*Shinkei sanjurokkaisen* (*New forms of thirty-six ghosts*)

Tsukioka Yoshitoshi (1839-1892)

1890

woodblock print on paper

36 x 24.6 cm



a.



b.

Image location: a. Canberra, National Gallery of Australia [NGA 96.612]; b. Antwerp, Museum: Royal Museum of Fine Arts Antwerp [2710/9]

Plate 122.

*Chinoiserie, een demon (Chinoiserie, a demon)*

James Ensor (1860-1949)

1885

tekening (drawing)

17.3 x 22.3 cm



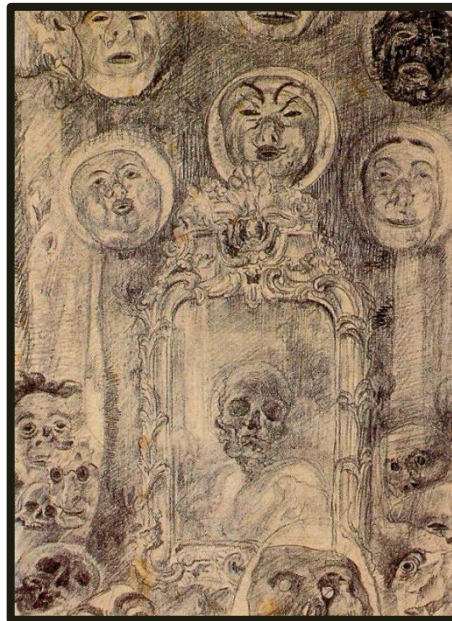
Image location: Antwerp, Royal Museum of Fine Arts Antwerp [2710/4]

## Plate 123

### a. Mirror with Skeleton

James Ensor (1860-1949)  
1890  
(details unknown)

a.



### b. Jigoku-dayu's reflection

Yoshitoshi  
1882  
woodblock print on paper  
(dimensions unknown)

b.

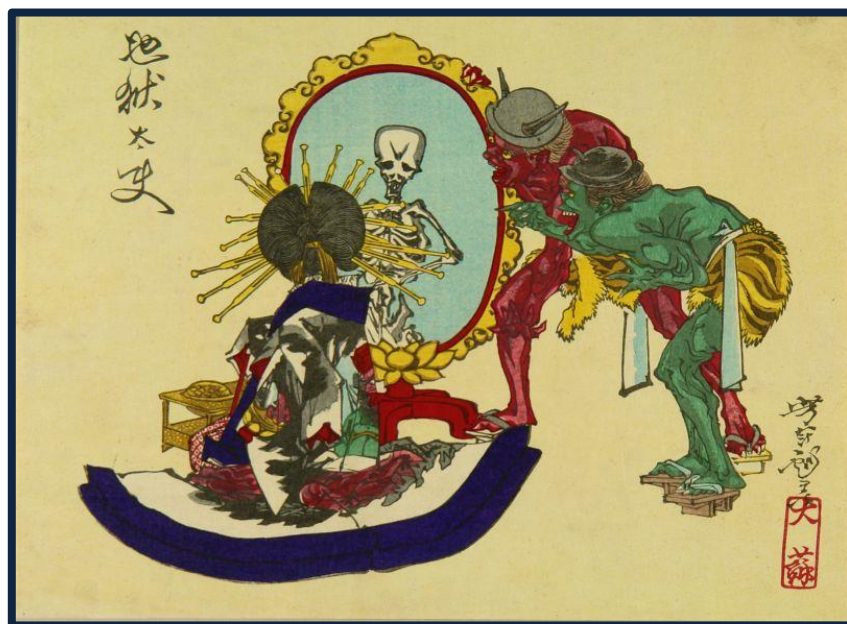


Image location: a. Private Collection; b. Stevenson, 1983: 15

Plate 124.

*Pierrot and Skeleton in a Yellow Robe*

James Ensor (1860-1949)

1893

schilderij (painting)

48 x 38 cm



Image location: Ghent, Museum of Fine Arts Ghent [2007-B]



Plate 125.

a. *Oni* masks

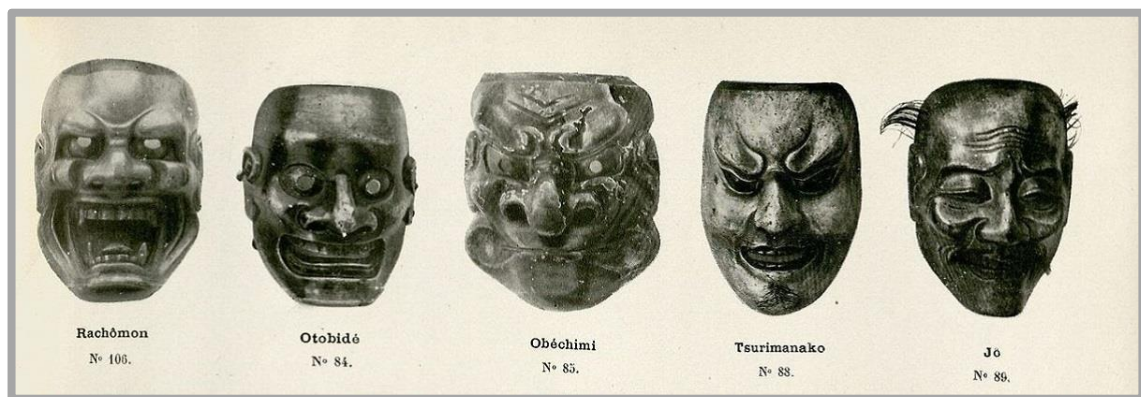
From the collection of Gillot

(details unknown)

b. Masks from the Estate of James Ensor

James Ensor (1860-1949)

(details unknown)



a.



b.

Image location: b. The Hague, Gemeente Museum

Plate 126.  
*The Sirens*

Gustave Klimt (1862-1918)  
1889  
oil on canvas  
82 x 52cm

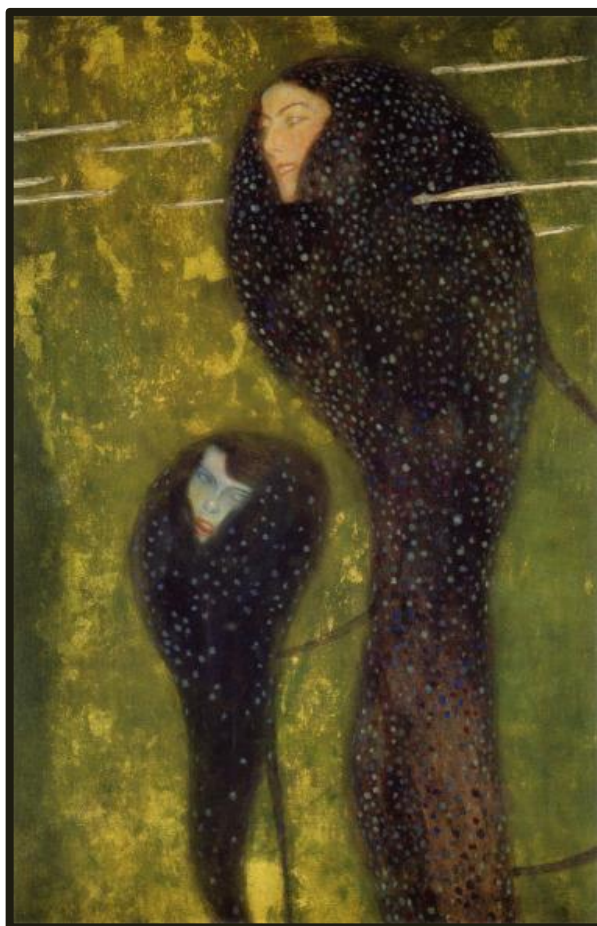


Image location: Vienna, Zentralsparkasse

Plate 127.  
*The Scream of Nature*

Edvard Munch  
1893  
oil, tempera & crayon on cardboard  
91 x 73.5 cm

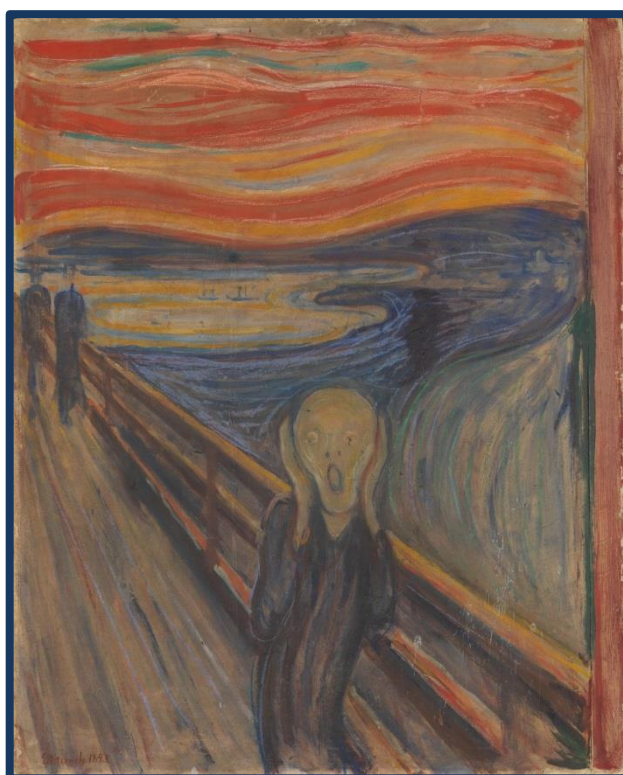


Image location: Oslo, National Gallery