

Durham E-Theses

The sculpture of Cumberland, Westmorland and Lancashire North-of-th-Sands in the Viking period

Bailey, Richard Nigel

How to cite:

Bailey, Richard Nigel (1974) *The sculpture of Cumberland, Westmorland and Lancashire North-of-th-Sands in the Viking period*, Durham theses, Durham University. Available at Durham E-Theses Online: <http://etheses.dur.ac.uk/10318/>

Use policy

The full-text may be used and/or reproduced, and given to third parties in any format or medium, without prior permission or charge, for personal research or study, educational, or not-for-profit purposes provided that:

- a full bibliographic reference is made to the original source
- a [link](#) is made to the metadata record in Durham E-Theses
- the full-text is not changed in any way

The full-text must not be sold in any format or medium without the formal permission of the copyright holders.

Please consult the [full Durham E-Theses policy](#) for further details.



1



2

ADDINGHAM I
Height - 104 cm.
1. West
2. West - detail
3. East
4. South
5. North
6. North - detail



3



4



5



6

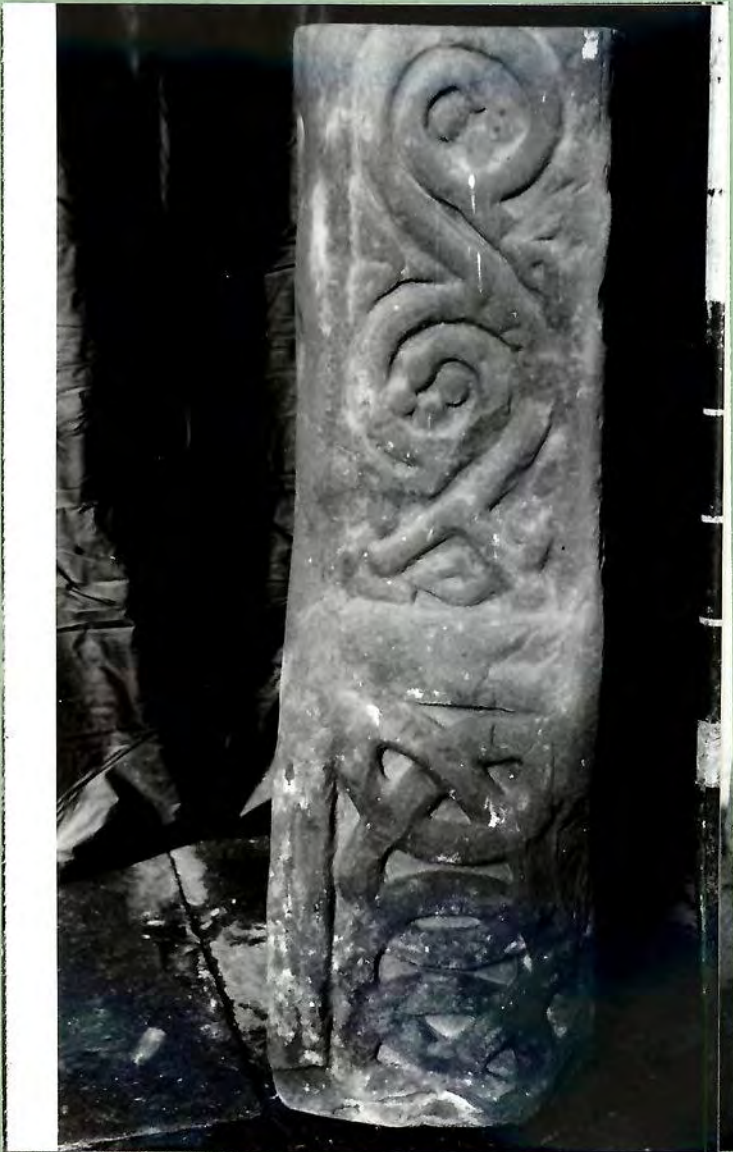


ADDINGHAM II
Height - 78.7 cm (lower)
89 cm (upper)
1. Face (lower)
2. Face (upper)
3 Dexter (lower)
4. Dexter (upper)
5. Sinister (lower)
6. Sinister (upper)

2



4



6

5

3



ADDLINGHAM III
76.2 by 70 cm.
2. Face
ADDLINGHAM IV
Height - 139.7 cm.
1. Face
ADDLINGHAM V
Length - 172.7 cm.
3. Side
4. Top of southern end



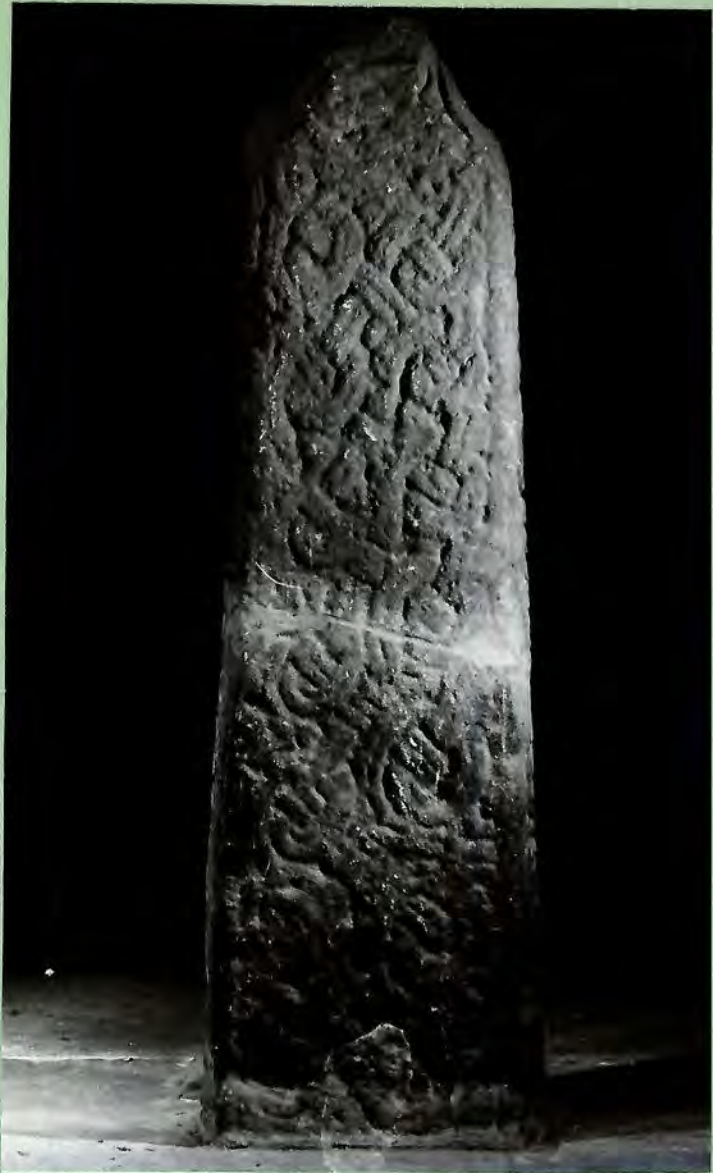
2



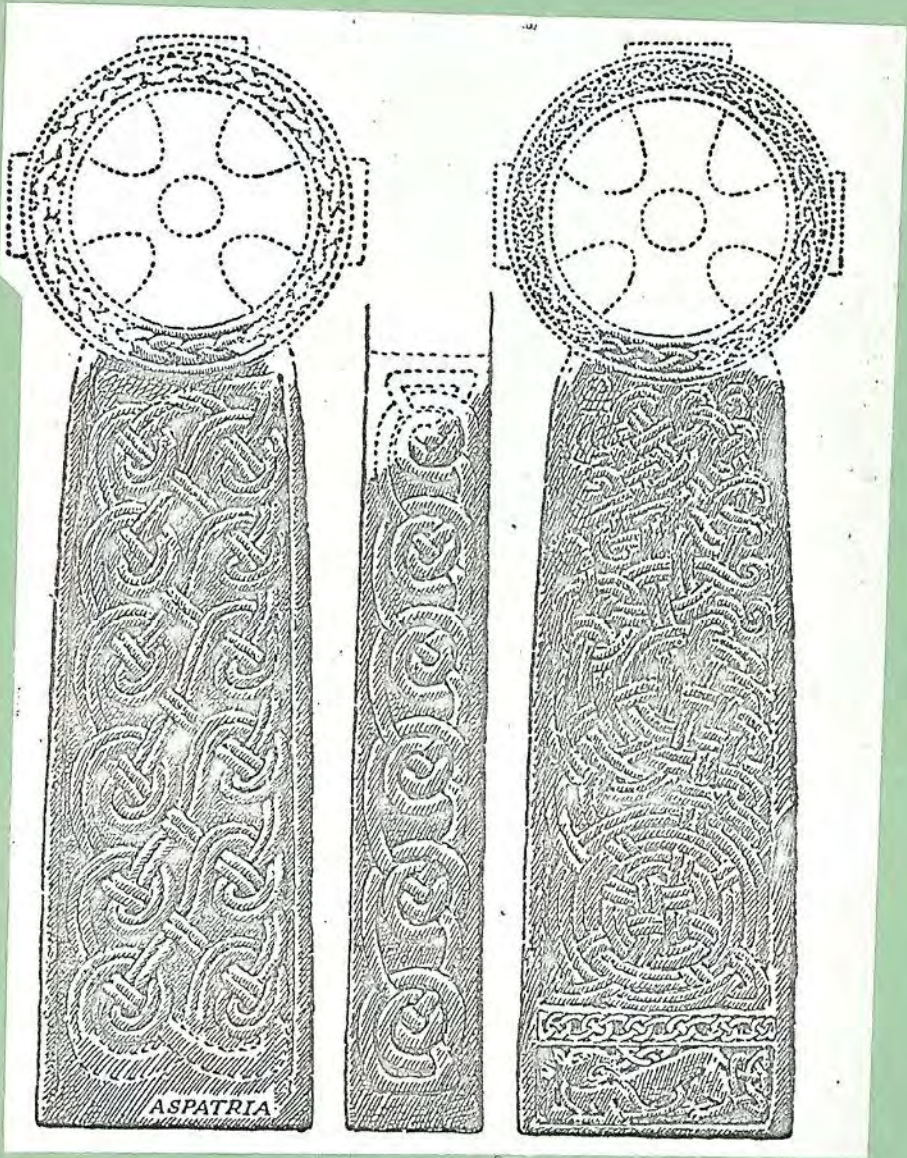
3



4



ASPATRIA I
Height - 156 cm.
1. East side
2. Drawing after W.G. Collingwood 1927.
3. West side - detail
4. West side - detail
5. North side
6. South side





1



2

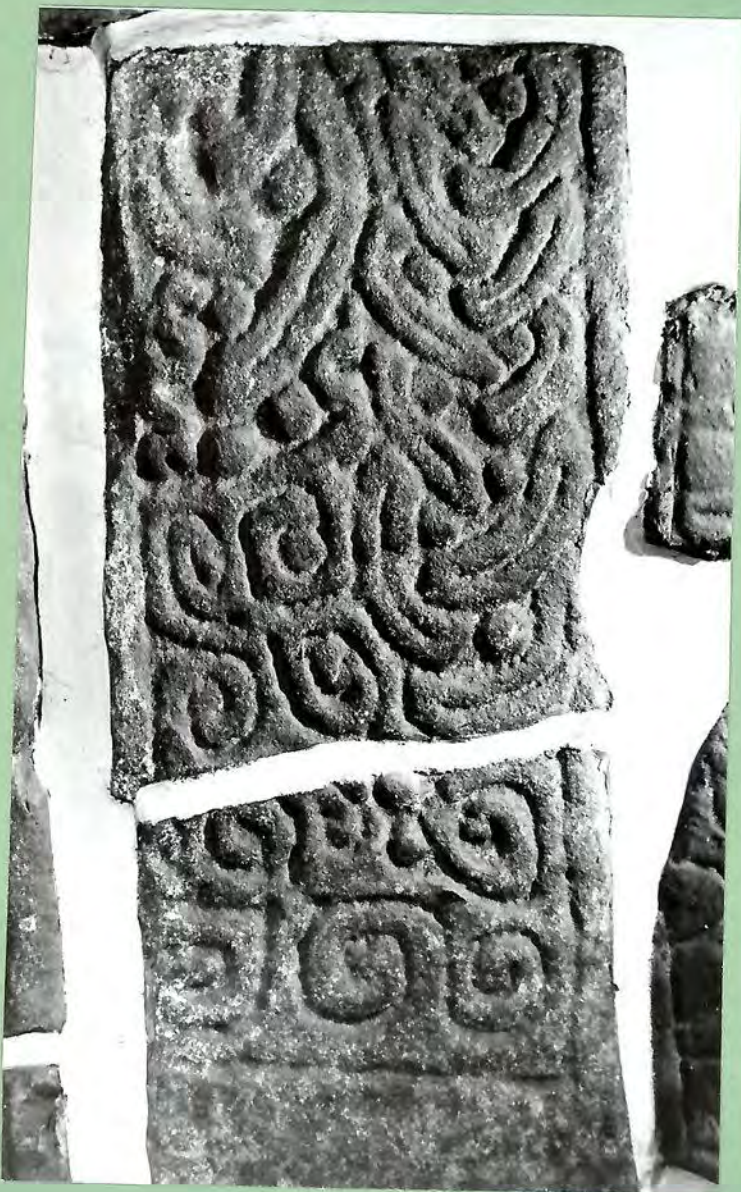
ASPATRIA II
Height - (A) 50.5 cm.
(B) 42 cm.
1. Face of A (with part of B)
2. Face of B

ASPATRIA III
Height - 17 cm.
3. Face

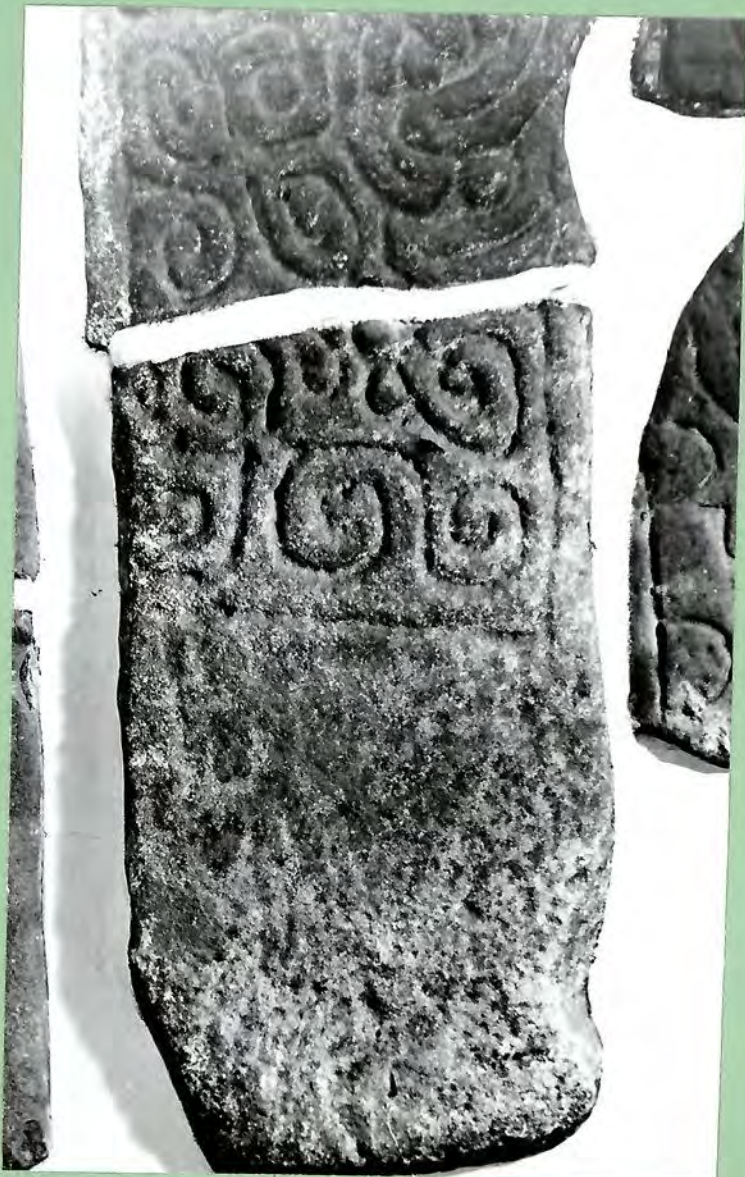
ASPATRIA IV
Height - (A) 55 cm.
(B) 64 cm.
4. Face of A (with part of B)
5. Face of B



3



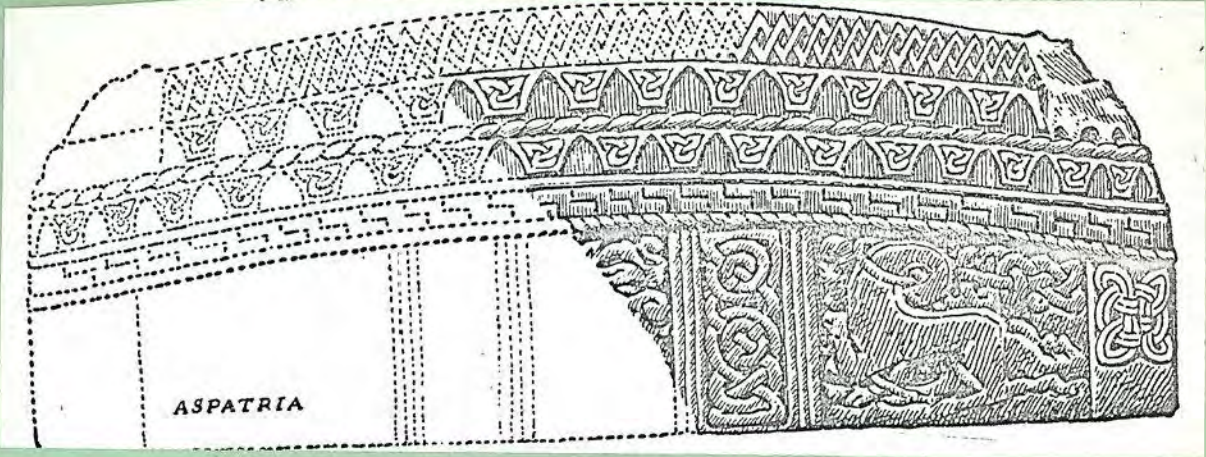
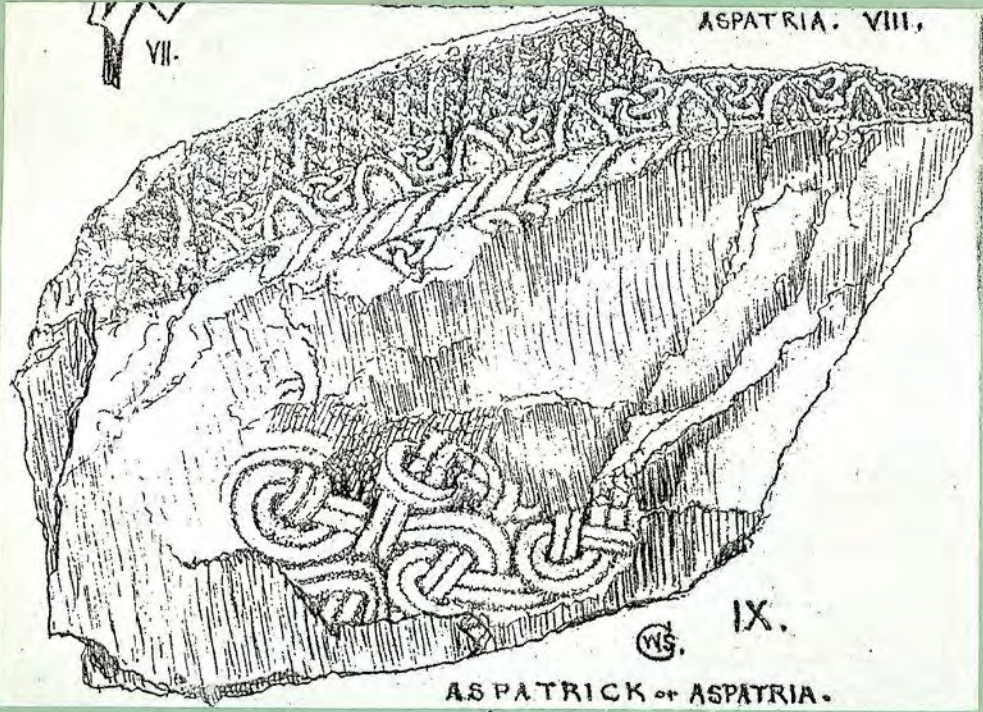
4



5



ASPATRIA V
Height - 22 cm.
1. Face
ASPATRIA VI
Height - (A) 47 cm.
(B) 20.5 cm.
2. Face of A
3. Face of B
ASPATRIA VII
Length - 116.8 cm.
4. Side B after
W.S.Calverley 1888c
5. Side A
6. Side B
7. Side A after
W.G.Collingwood 1927
8. Side A - detail

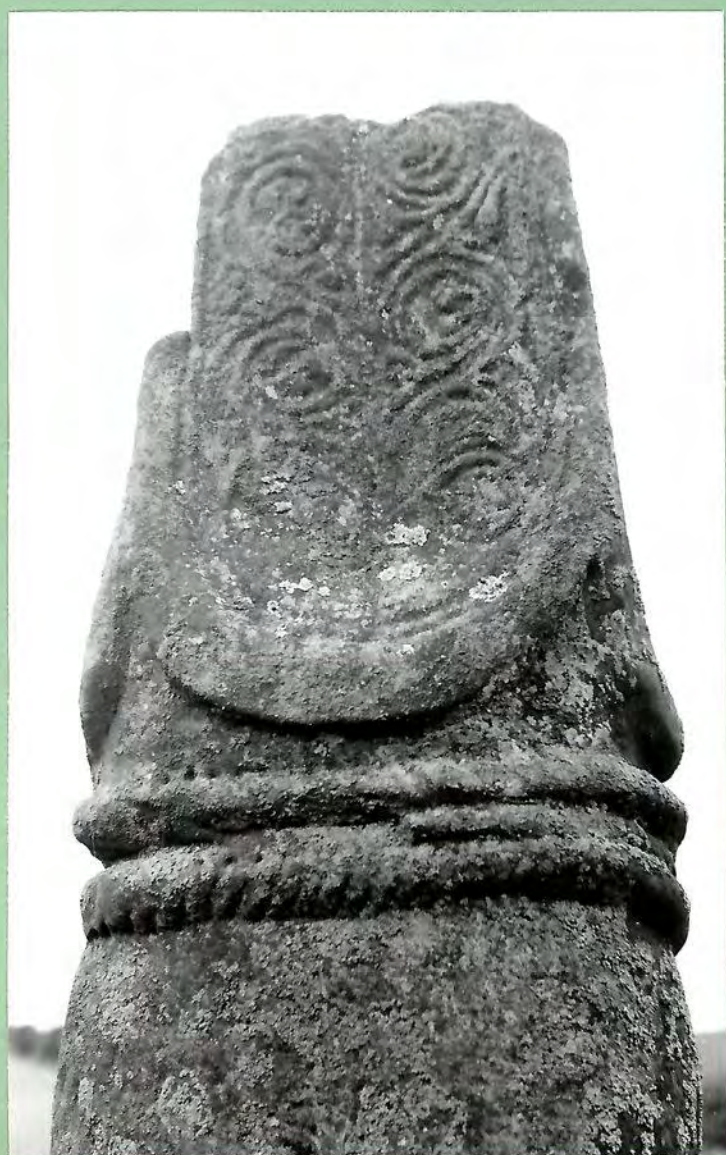




BECKERMET St. BRIDGET I

Height-132 cm.

1. General view from North-West (with no. 2)
2. West side
3. East side
4. East side - detail
5. South side



PHOTOGRAPHS

The arrangement of photographs corresponds to the order in which the sculptures are listed in Volume 2. Earlier drawings are used where a stone is now lost, inaccessible or heavily worn.



BECKERMET St BRIDGET II

Height - 172 cm.

1. General view from South-East (with no. 1)
2. South side
3. West side
4. North side
5. East side





BECKERMET St JOHN I

Height-83 cm.

1. After W.S. Calverley 1899
2. Sinister
3. Face
4. Dexter

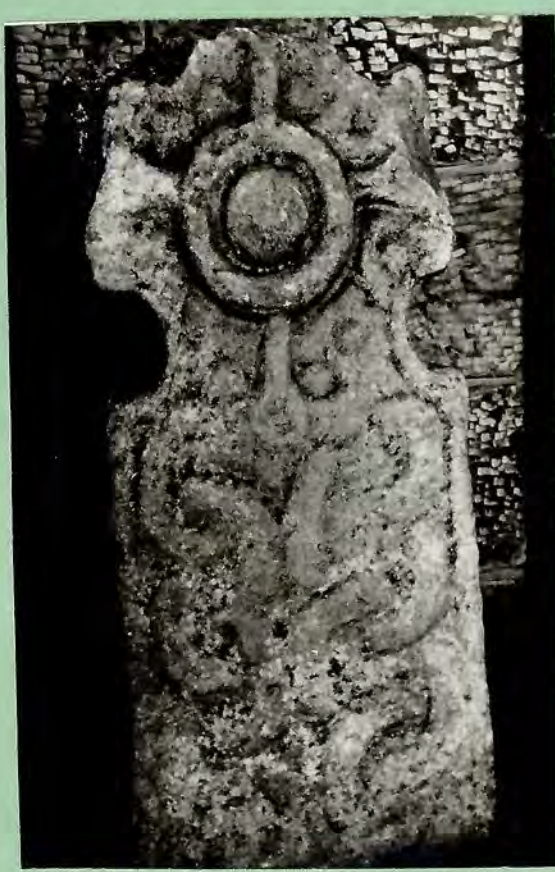
BECKERMET St JOHN II

Height-69 cm.

5. Dexter
6. After W.S. Calverley 1899
7. Face



2



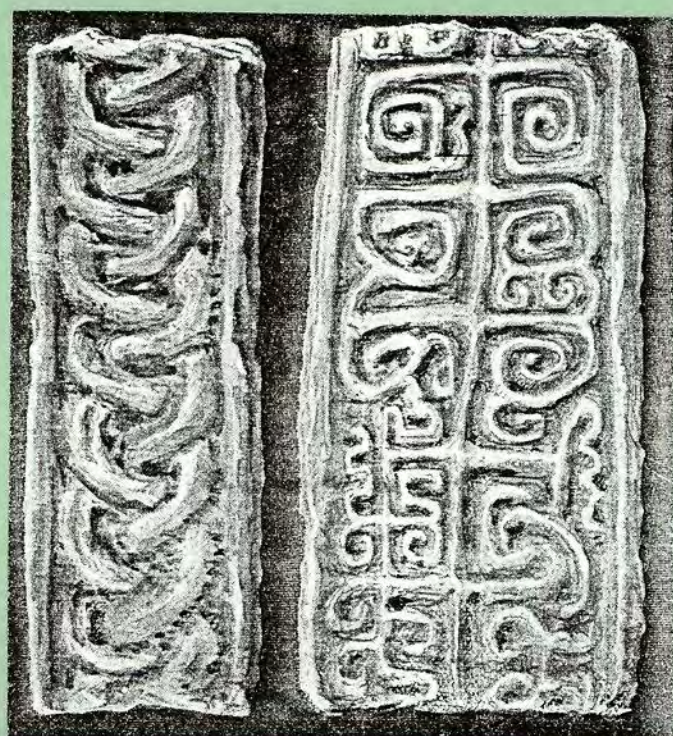
3



4



5



6



7

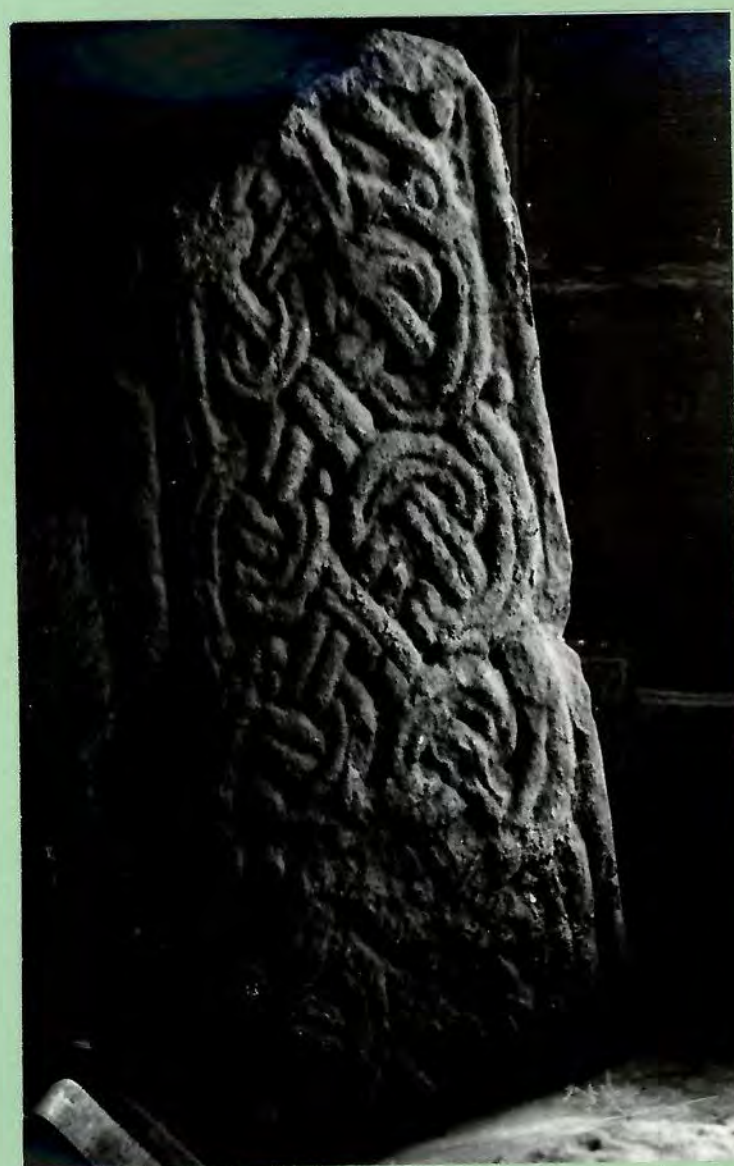


1

BECKERMET St JOHN III

Height - (A) 59 cm.
(B) 61 cm.

1. Reconstruction after
W.S. Calverley 1899
2. Face of A
3. Sinister of A
4. Dexter of A



2



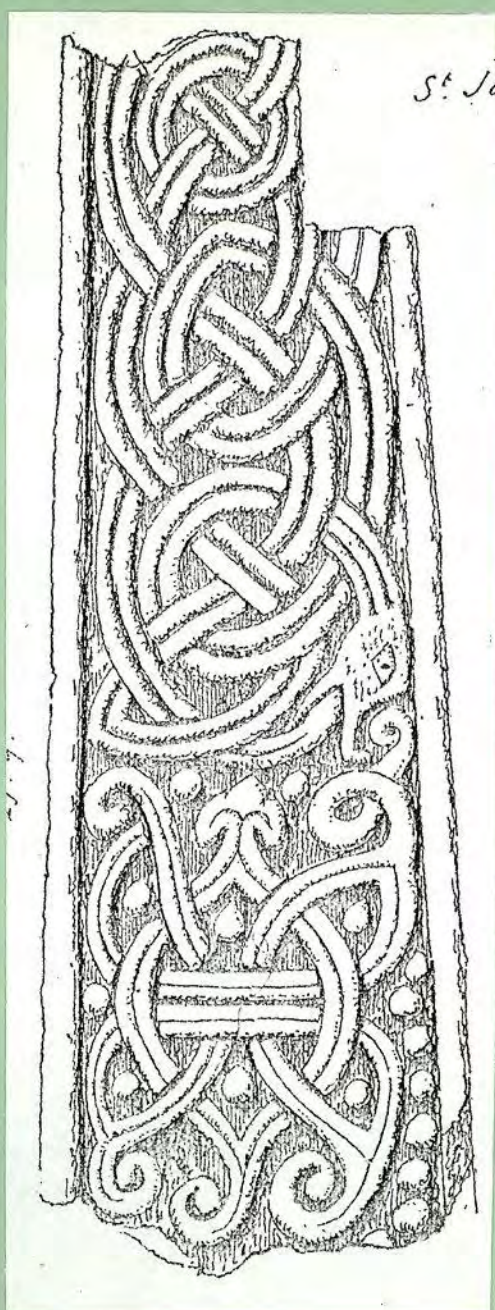
3



4

BECKERMET St JOHN III
(see also preceding sheet)
Height - (A) 59 cm.
 (B) 61 cm.
1. Face of B
2. Sinister of B
3. Reverse of B
4. Dexter of B





2

BECKERMET St JOHN IV
Height - 93 cm.

1. Face
2. Face after E.H.Knowles 1880
3. Sinister
4. After W.S.Calverley 1899

BECKERMET St JOHN V
Height - 67 cm.

5. Face
6. Reverse (inverted)
7. Dexter
8. Sinister (inverted)



3



4



5



6



7



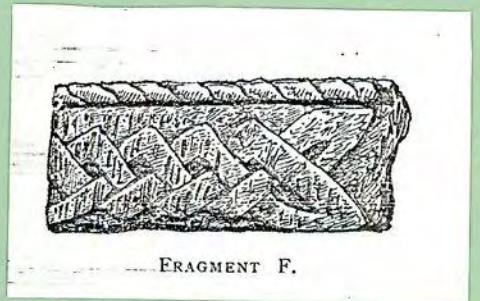
8



BECKERMET St JOHN VI
Height - 17.5 cm.
1. Face
2. Reverse
3. Sinister
4. Dexter

BECKERMET St JOHN VII
Length - 60.5 cm.
5. Front
6. Side
7. Top

BECKERMET St JOHN VIII
Height - 57 cm.
8. After W.S. Calverley 1899



NEWCASTLE I
Height - 4 m. 41.9 cm.
1. West
2. East
3. South
4. North
5. North and West



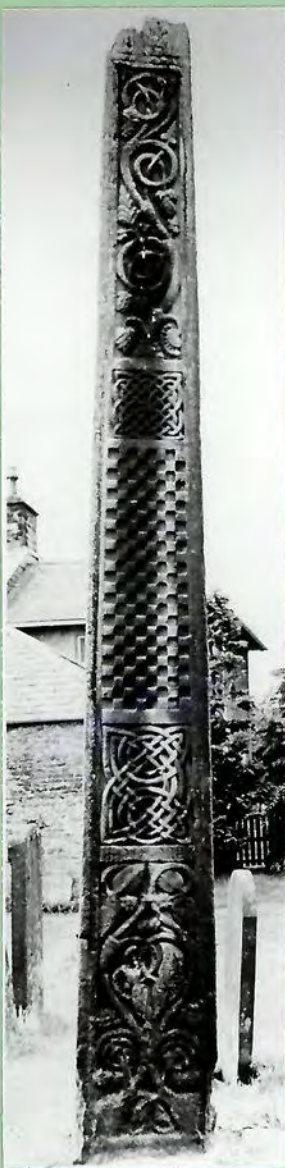
1



2



3



4



5



1

BEWCASTLE II
Height 23 cm.

1. Face

BRIDKIRK I
Height - 33 cm.

2. Face

3. Reverse

BRIDKIRK II
Height - 12.7 cm

4. Face



2



3



4



BRIGHAM I
Height - 61 cm.
1. Face

BRIGHAM II
Height - 15.9 cm.
2. Face
3. Sinister
4. Reverse
5. Dexter



2



4



3



5

1



2



BRIGHAM III
Height - 47 cm.
1. Face
2. Sinister
—
BRIGHAM IV
Height 45.5 cm.
3. Face
4. Reverse
5. Sinister
6. Dexter

3



4



5



6





1

BRIGHAM V
Height - 43.1 cm.
1. Reverse
2. Dexter
3. Face
4. Sinister



2



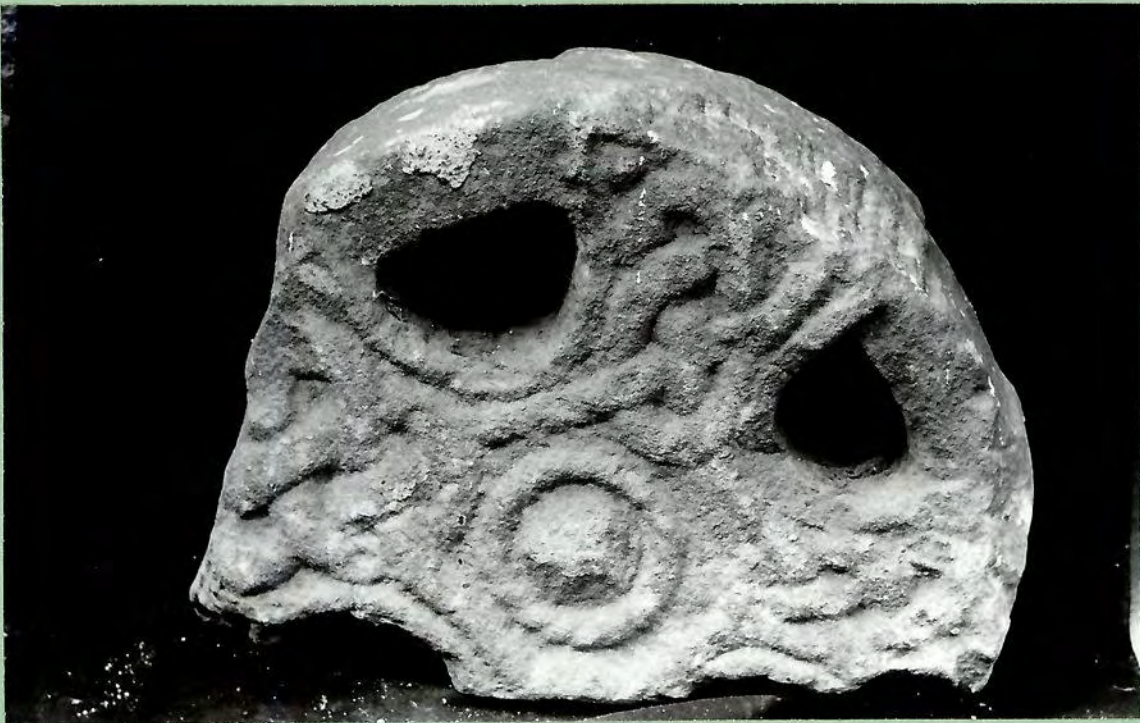
3



4



BRIGHAM VI
Height - 34.2 cm.
1. Face
2. Reverse
—
BRIGHAM VII
Height - 43.1 cm.
3. Face
4. Face - detail
5. Face - detail



2



3



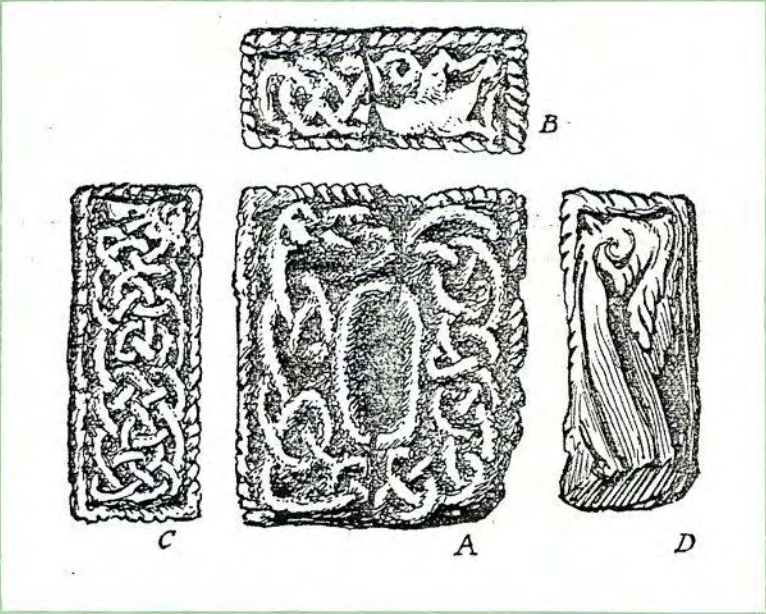
5



4



BRIGHAM VIII
Height - 17.5 cm.
1. Face
2. Reverse
BRIGHAM IX
Top : 88.9 cm.
76.2 cm.
3. Top
4. Top
5. After W.S. Calverley 1899



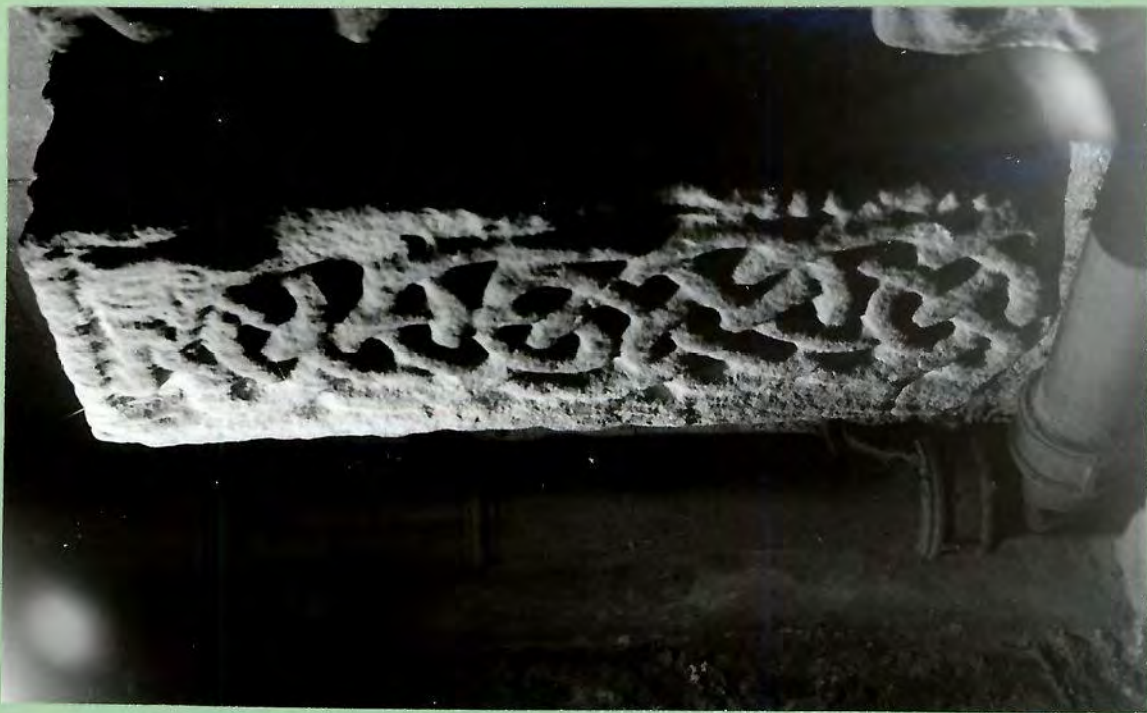
1

2

3

4

5



BRIGHAM IX
(see preceding sheet)

1. Panel A
2. Panel B
3. Panel C

BRIGHAM X

Length - 25.4 cm.

4. Side
5. Gable-end

2



3



4



5





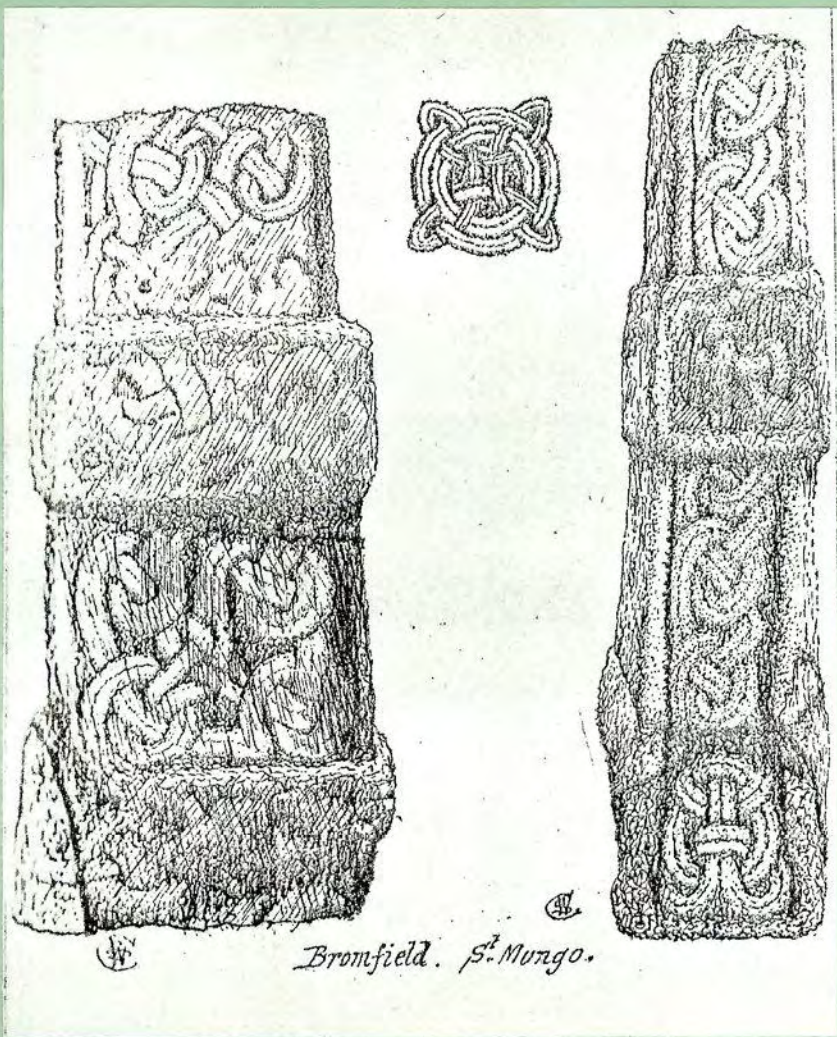
BRIGHAM XI
Height - 17.8 cm.
1. Face
2. Sinister

BROMFIELD I
Height - 76 cm.
3. Face
4. Reverse
5. After W.S. Calverley 1893

2



4



5



BROMFIELD I
Height - 76 cm.
1. Sinister
2. Dexter - detail

BROMFIELD II
Height - 76 cm.
3. Face

BROMFIELD III
Height - 53 cm.
4. Face
5. Face , oblique view

2



3



4



5



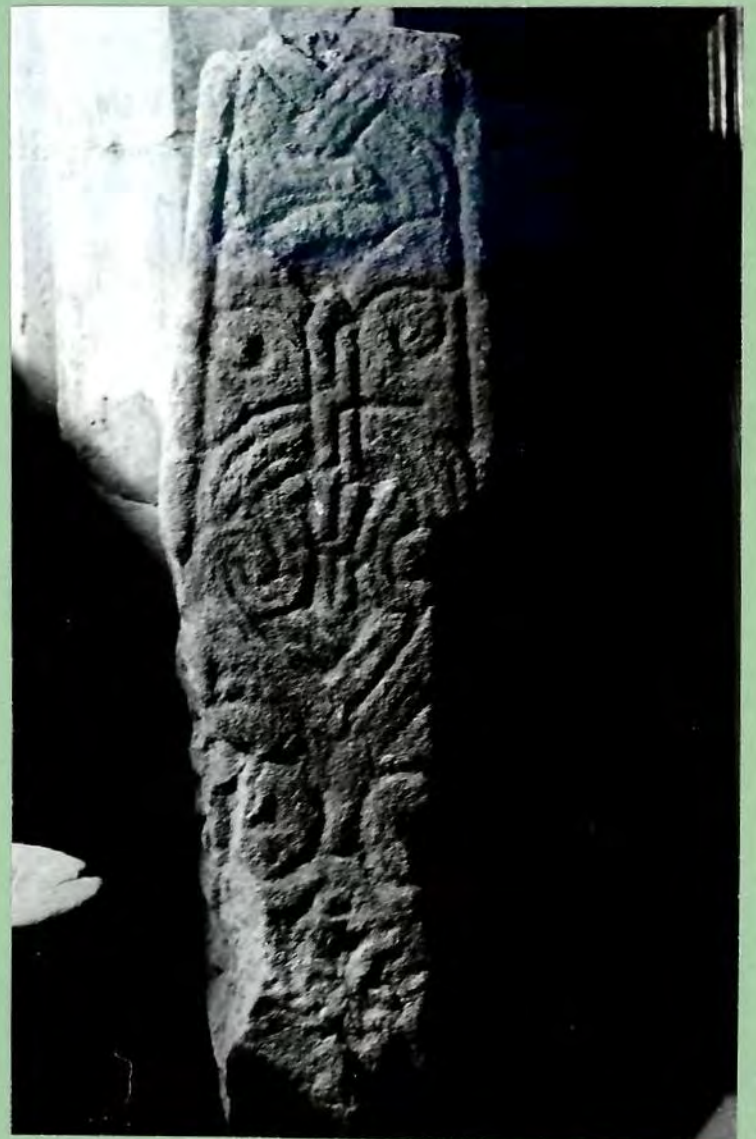
BROMFIELD IV
Length - 152.4 cm.
1. Visible side
BURTON IN KENDAL 1
Height - 96 cm.
2. Face
3. Reverse
4. Face after W.S. Calverley 1899
5. Dexter
6. Sinister

2



4

3

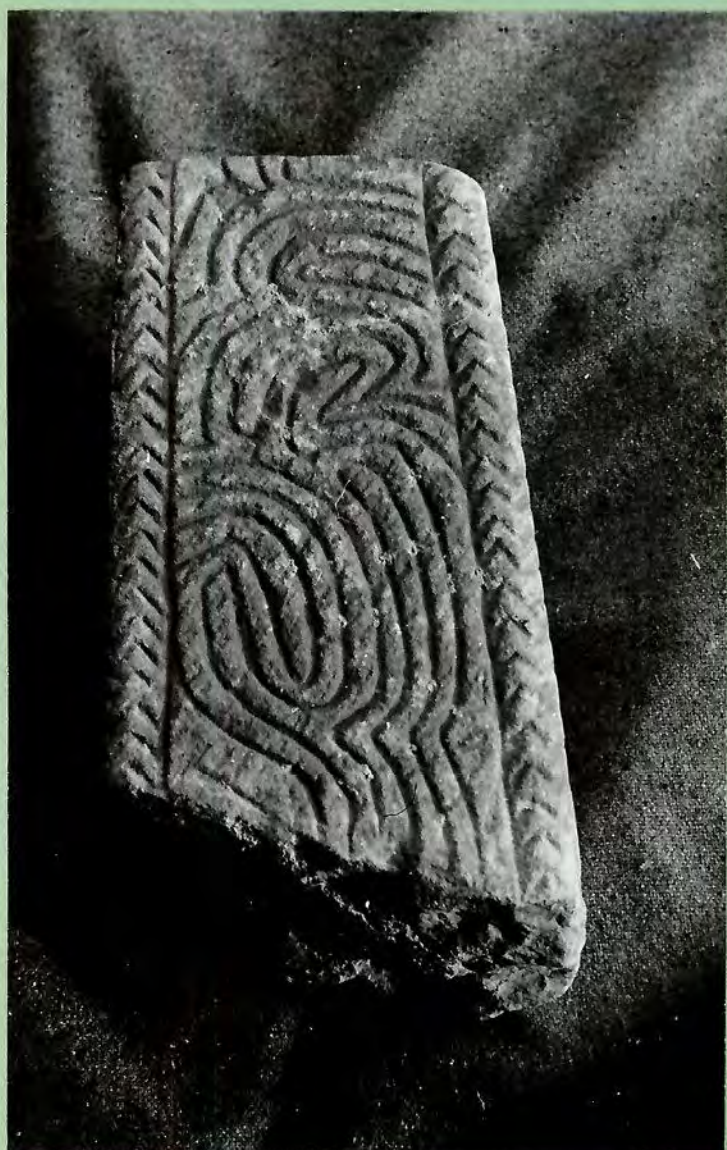


5



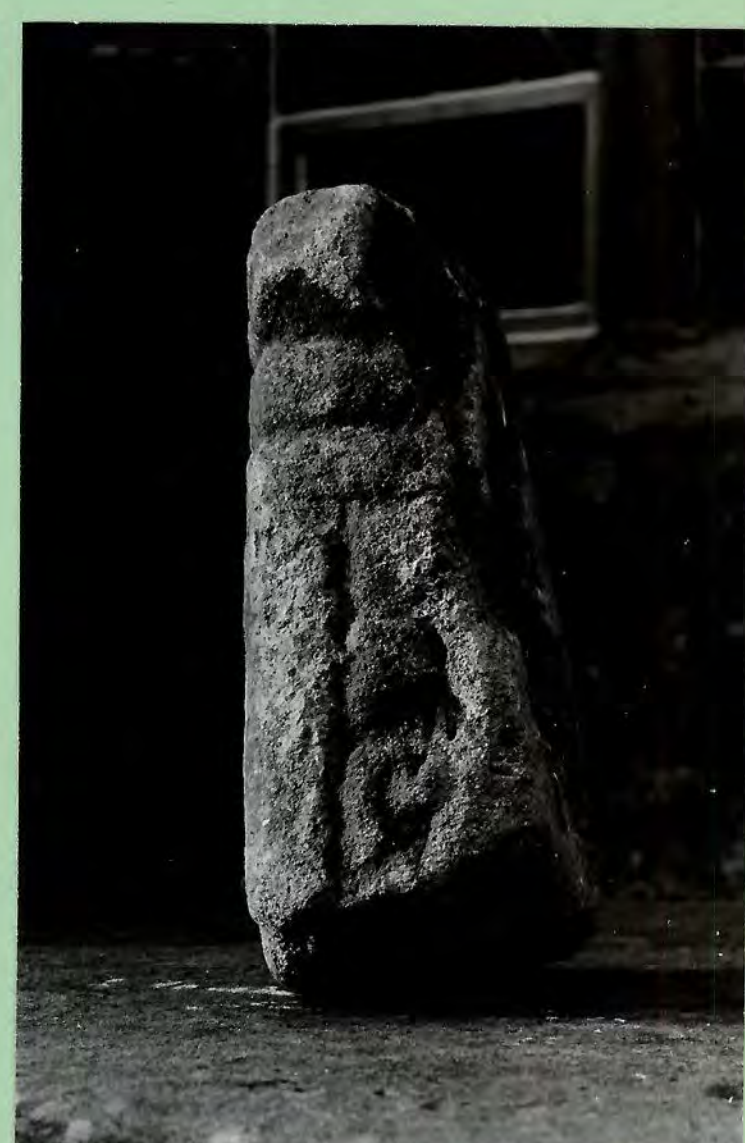
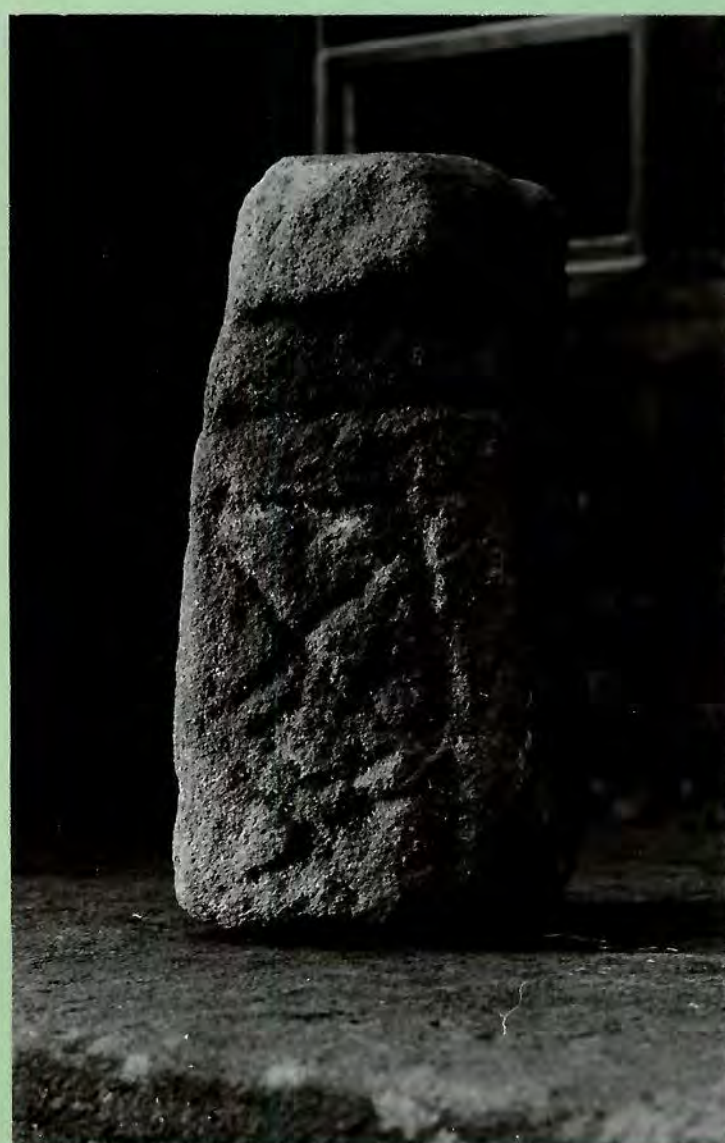
6





BURTON IN KENDAL II
Height - 40 cm.
1. Face
2. Reverse
3. Sinister
4. Dexter

BURTON ^TIN KENDAL III
Height - 33 cm.
5. Dexter
6. Face
7. Sinister



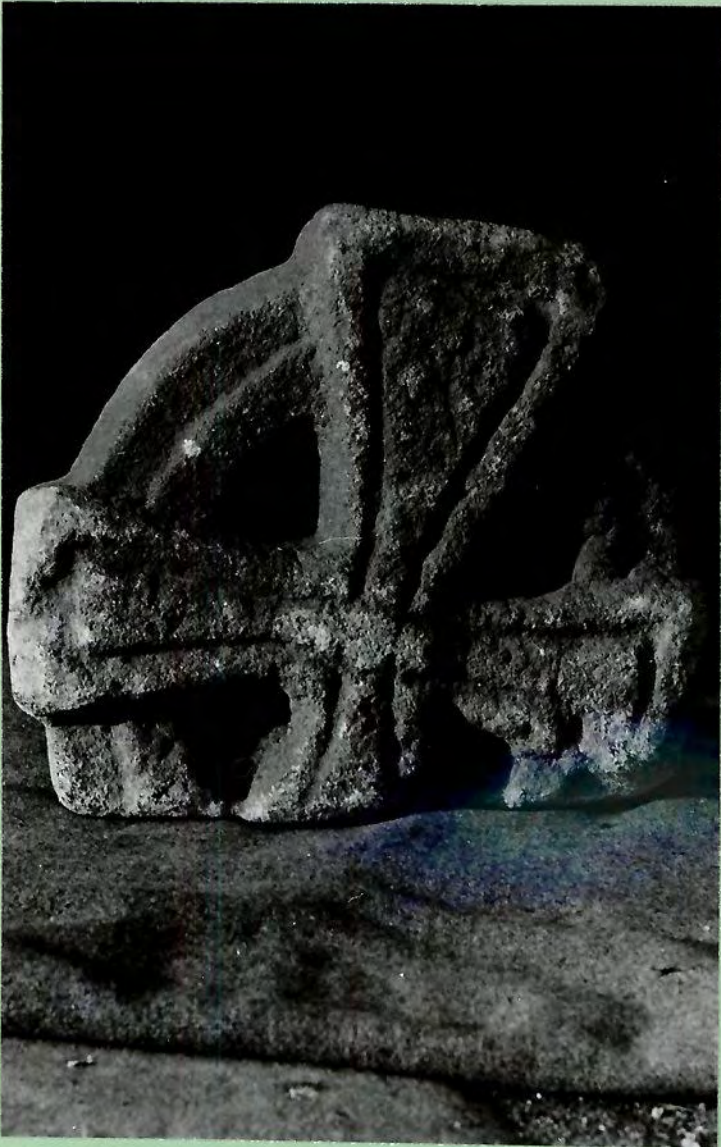
BURTON IN KENDAL IV

Height - 32 cm.

1. Face

2. Reverse

3. Side



1



2



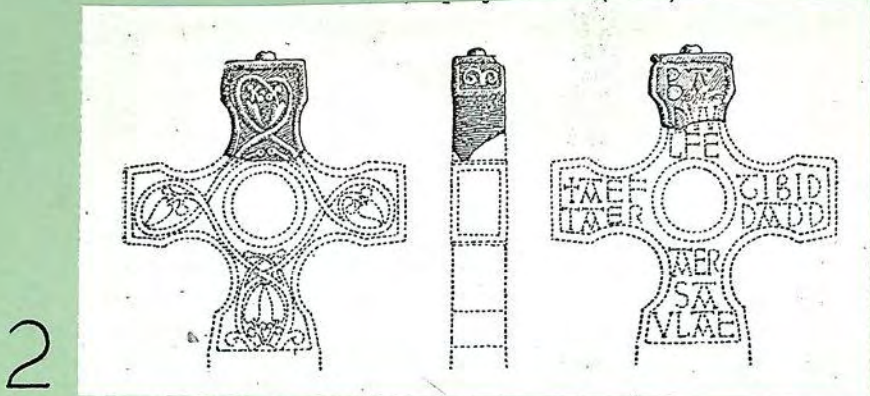
3



CARLISLE I
Height - 43.2 cm.
1. Face

CARLISLE II
Height - 17.8 cm.
2. After W.G.Collingwood 1916.

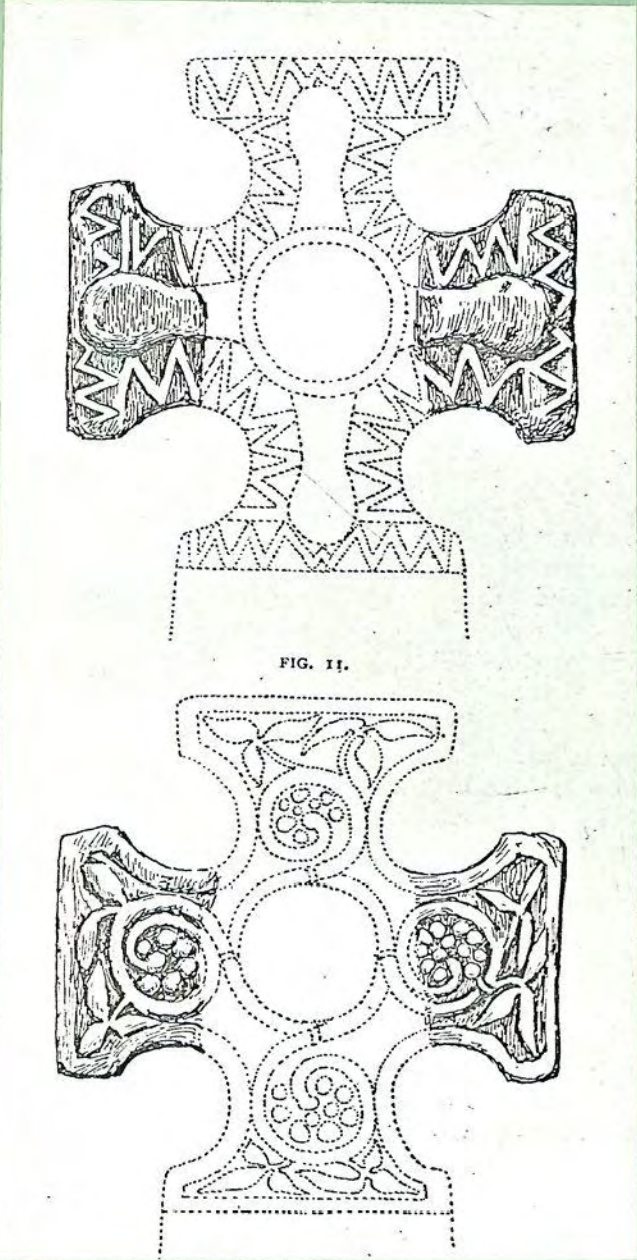
CARLISLE III
Height - 18.4 cm.
3. Face
4. Reverse
5. After W.G.Collingwood 1901a
6. Ends of arms.



3



4



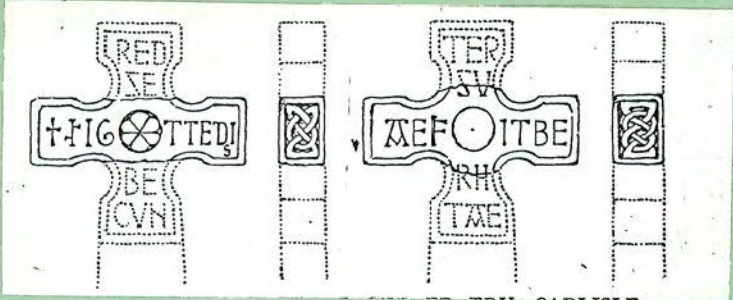
5



6



CARLISLE IV
Height - 10.8 cm.
1. Face
2. After W.G.Collingwood 1915a
3. Reverse
4. Top
5. Sinister end
6. Dexter end



2



3



4



5



6



1



2

CROSS CANONBY I
Height - 55 cm.

1. Face
2. Reverse
3. Sinister
4. Dexter

CROSS CANONBY II
Height - 22 cm.

5. Face
6. Reverse



3



4



5



6



CROSS CANONBY III

Length - 185.4 cm

Photo : H. Schmidt

1. East side
2. Top - northern end
3. From south
4. South gable-end



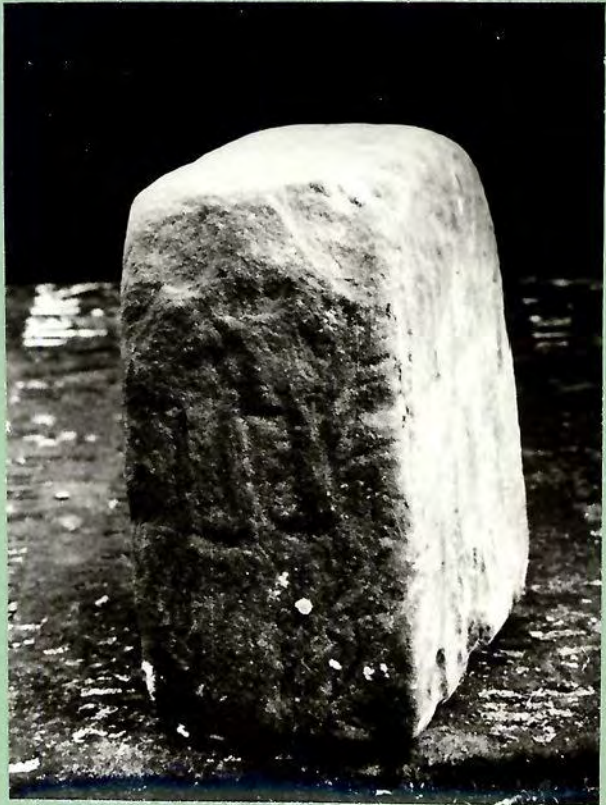


CROSS CANONBY IV
Length - 82 cm.
1. Face

CROSS CANONBY V
Height - 21.5cm.
2. Face
3. Dexter
4. Sinister



2



3



4

DACRE I

Height - 96.5 cm.

1. North side

2. West side



3



DACRE I
Height - 96.5 cm.
1. Face } transferred
2. Sinister } to preceding
sheet

DACRE II
Height - 28 cm.
3. Face
4. Reverse
5. Sinister
6. Dexter

3



4

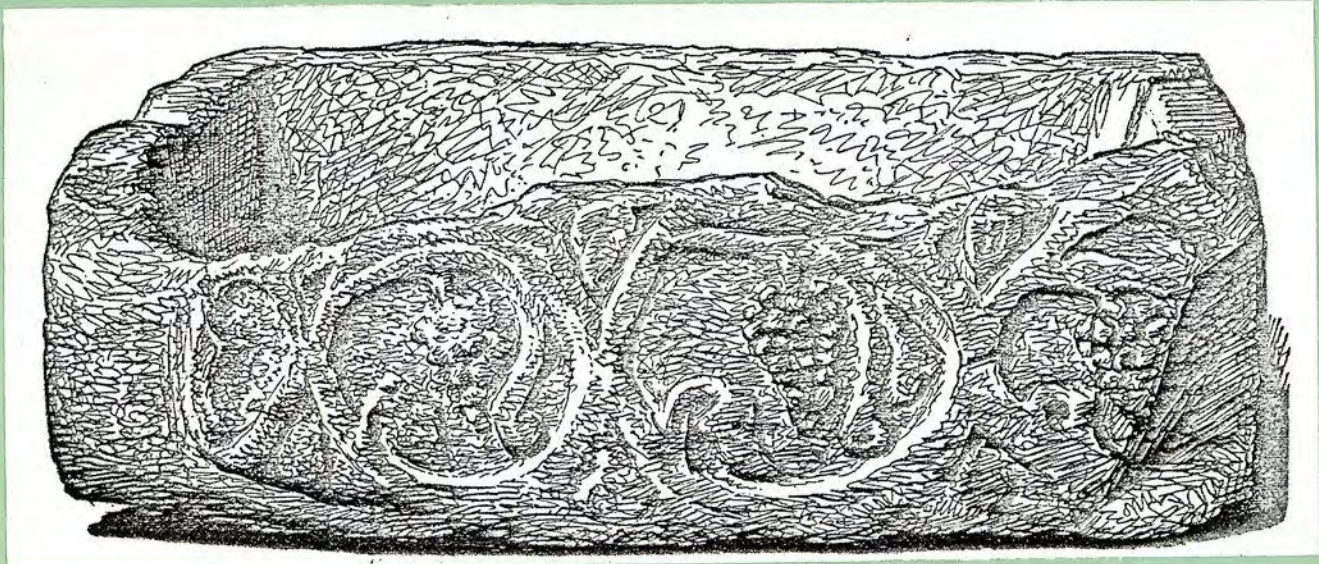


5



6





DALSTON

Length - 137.2 cm.

1. After W.G.Collingwood 1905

DEARHAM I

Height - 165 cm.

- 2. South side
- 3. South and East side
- 4. North and East side
- 5. South and West sides

2



3



4



5





DEARHAM II
Height - 83.5 cm.
1. Face
2. Reverse
3. Face after W.S. Calverley 1884.

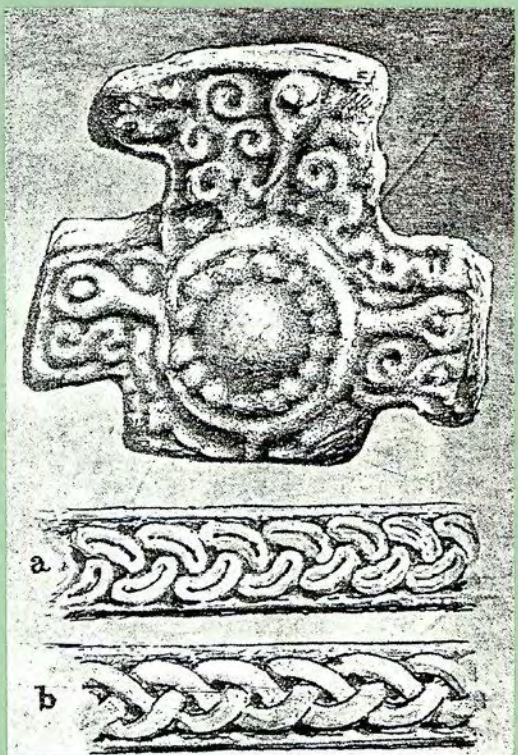
DEARHAM III
Height - 50.5 cm.
4. Face
5. Face after W.S. Calverley 1899
(with narrow sides of no. II)



3



4



5



DISTINGTON I
Height - 30.5 cm.
1. Face
2. Reverse
3. Sinister

DISTINGTON II
Height - 35.5 cm.
4. Face



2



3



4



DISTINGTON III

Height - 10 cm.

1. Face

DISTINGTON IV

Height - 23 cm.

2. Face

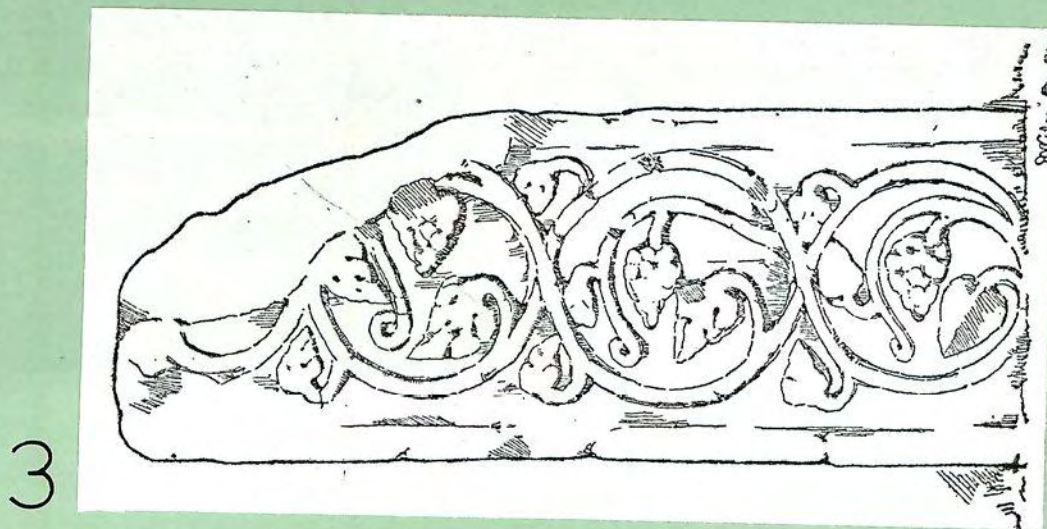
FALSTEAD

Length - 170 cm.

3. After W.G. Collingwood 1905



2



3

GILCRUX
Height - 57 cm.
1 - 2 Face
3 - 4 Reverse



2



3



4

GILCRUX
(See preceding sheet)
Height - 57 cm.
1. Edge
GLASSONBY
Height - 48 cm.
2. After W.G.Collingwood 1901



1

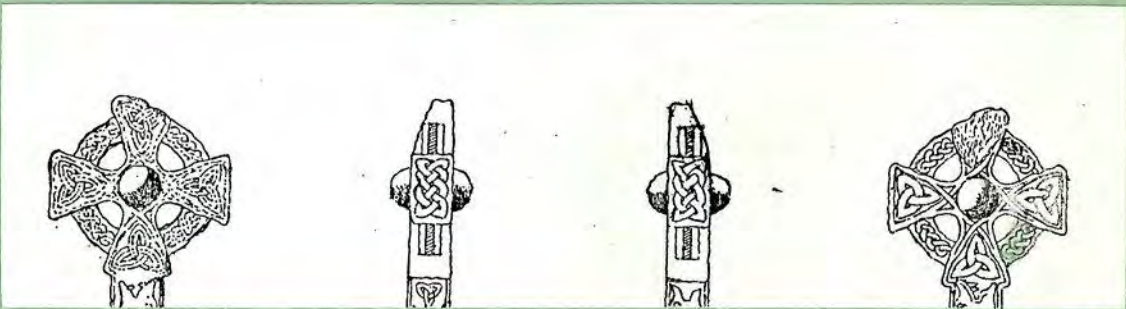
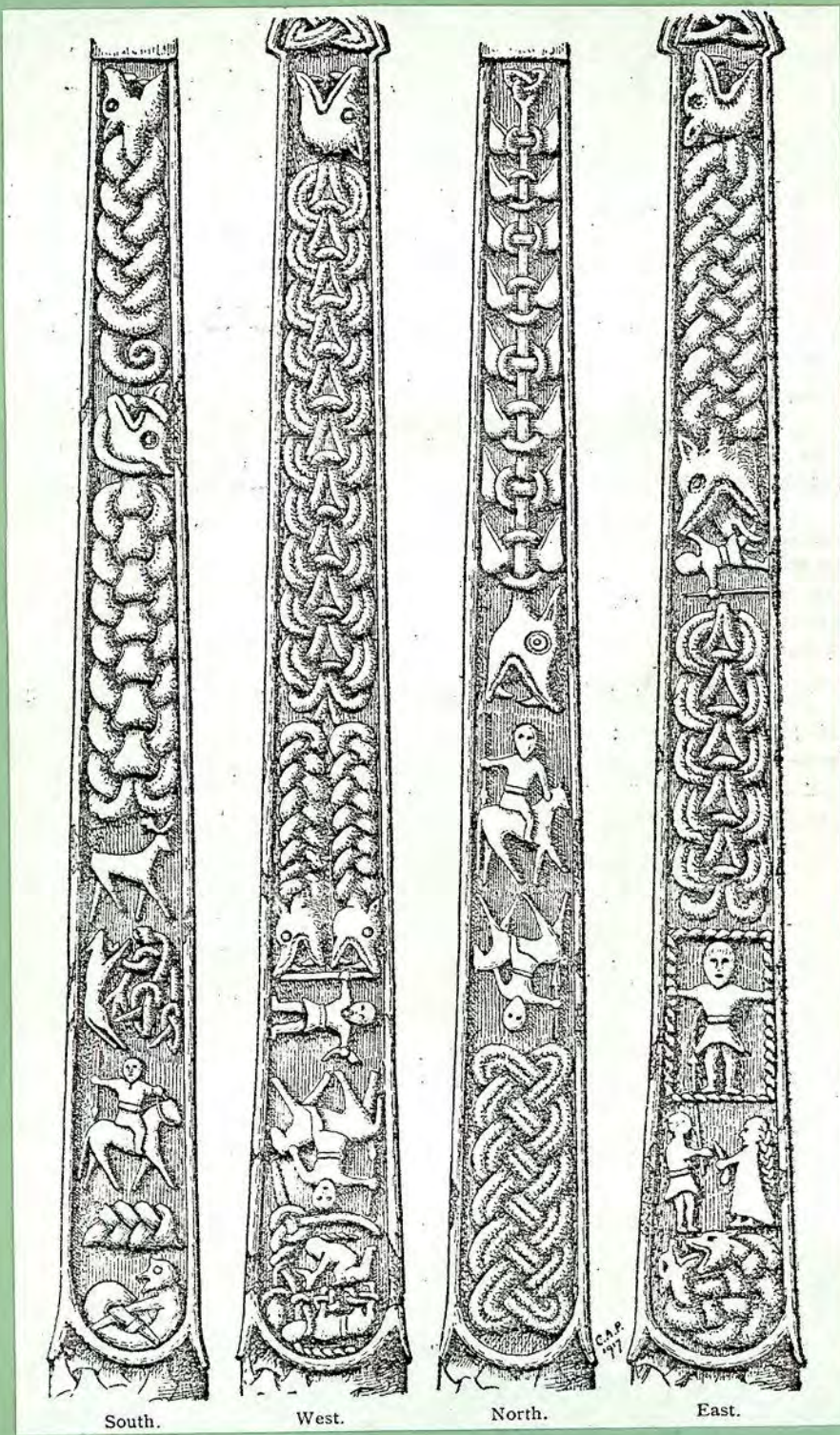


2

GOSFORTH I

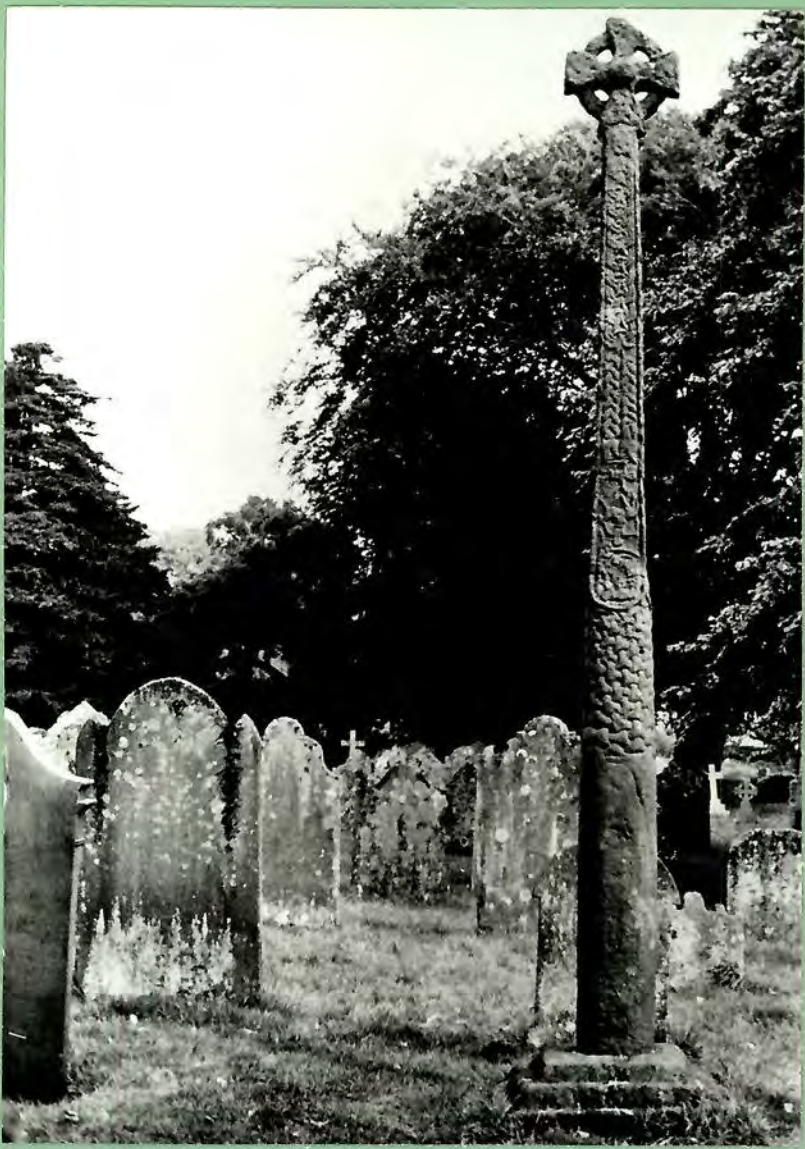
Height - 4 m. 42 cm.

- 1. After C.A. Parker and
W.G. Collingwood 1917
- 1a. After C.A. Parker 1896
- 2. West side
- 3. East side - detail



a

2



3

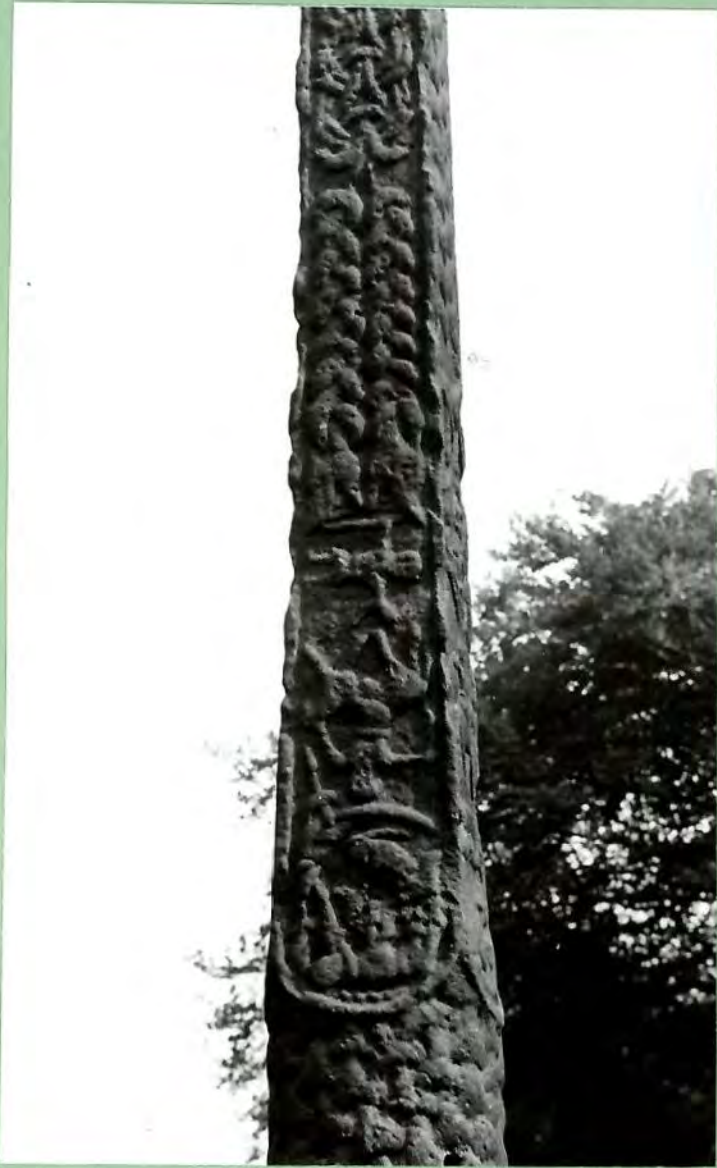


1

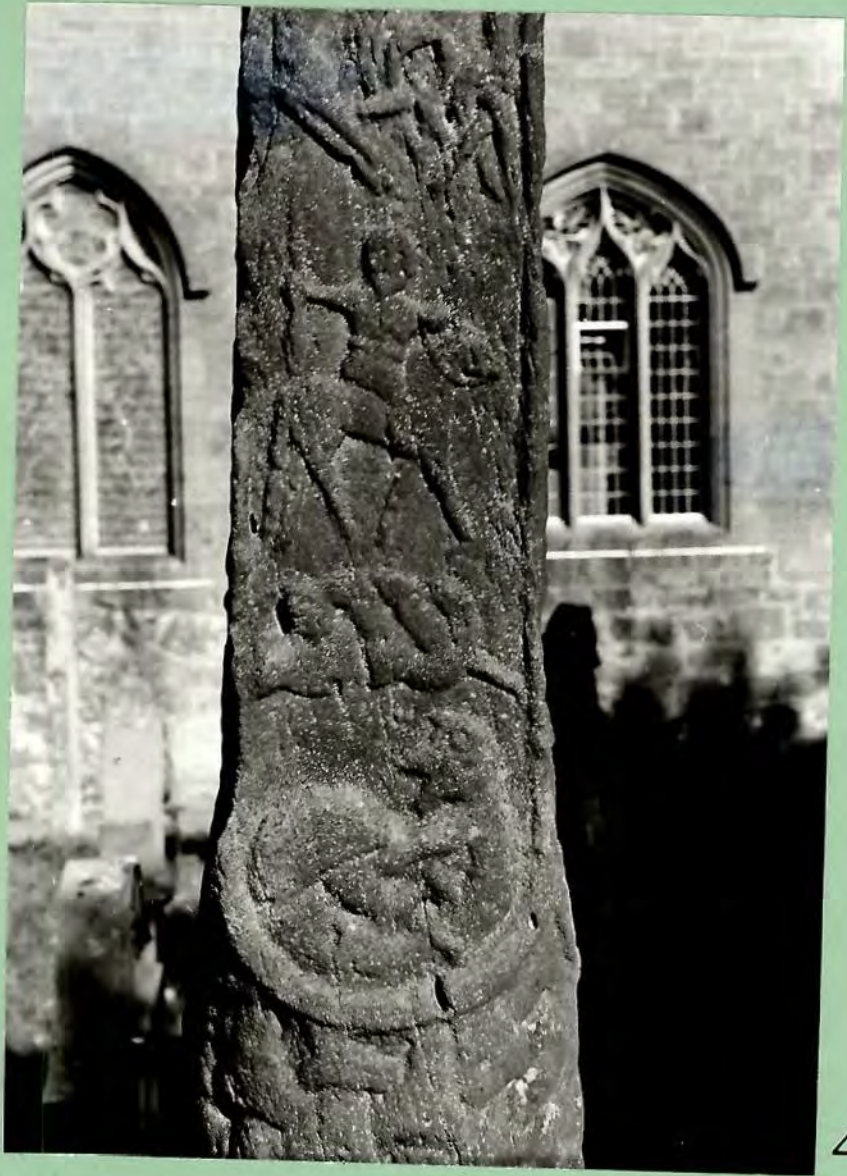


2

GOSFORTH I
Height - 4 m. 42 cm.
(see preceding sheet)
1. East side - detail
2. East side - detail
3. West side - detail
4. South side -detail
5. South side - detail
6. South side - detail



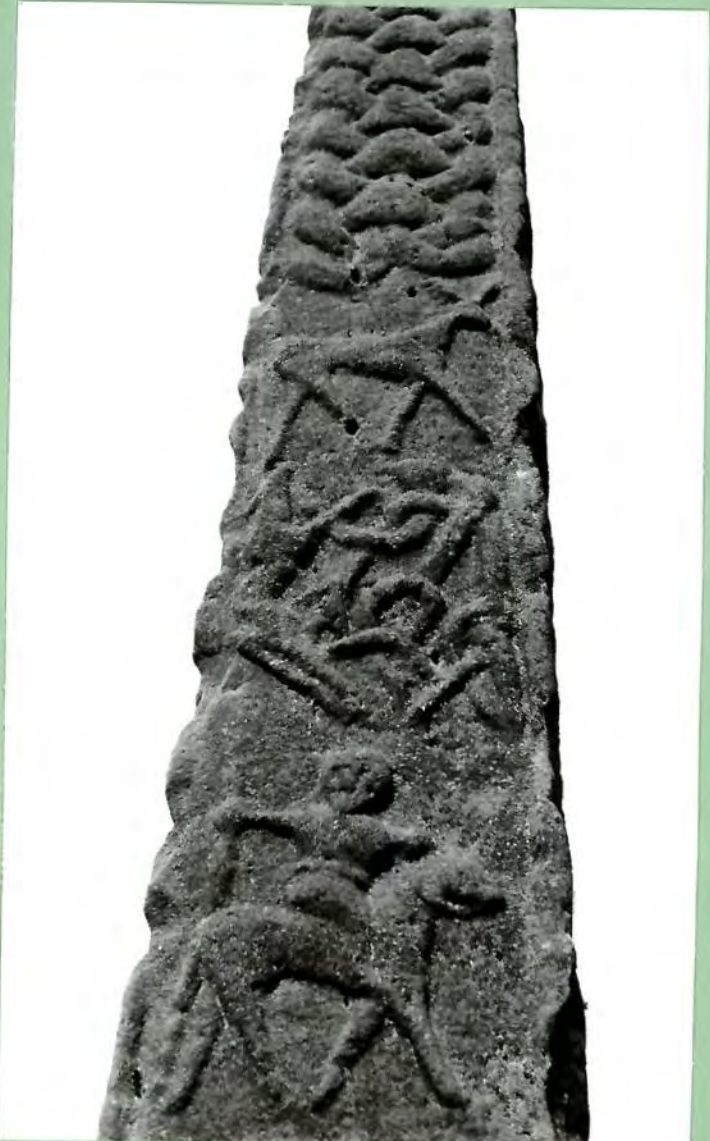
3



4



5



6

GOSFORTH I

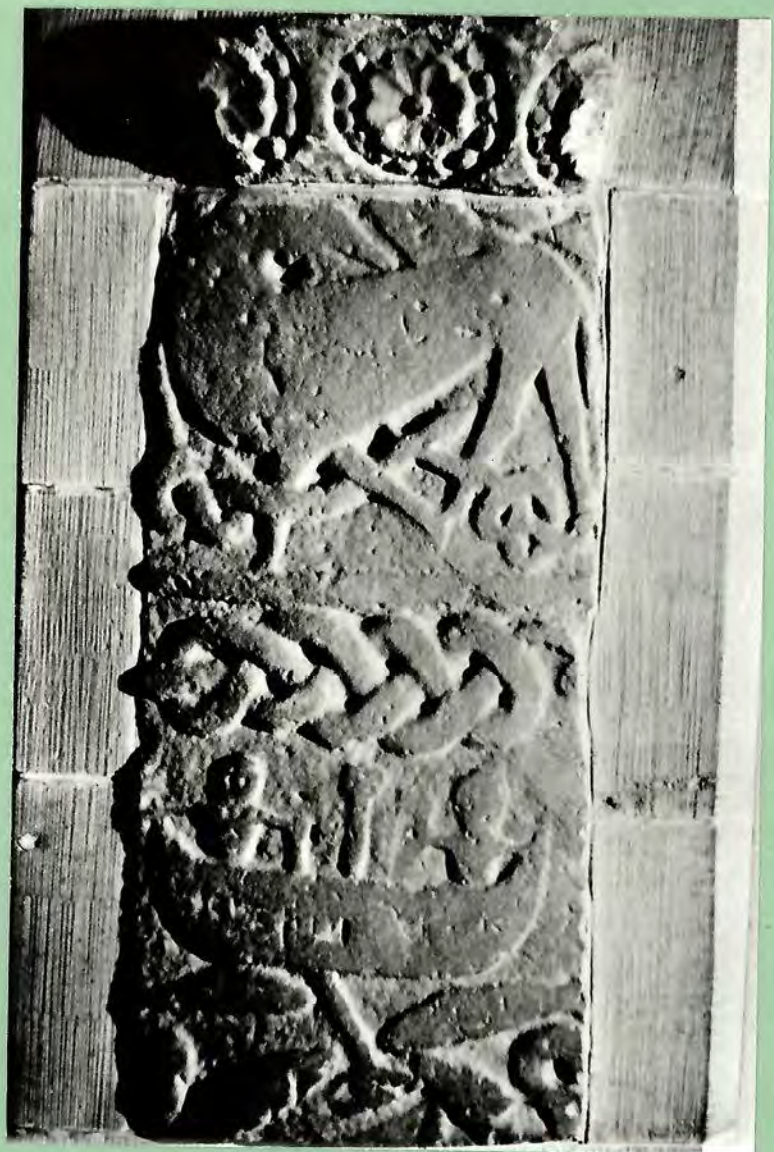
Height - 4 m. 42 cm.

(see preceding sheets)

1. North side

2. North side - detail





GOSFORTH II
Height - 69.9 cm.
1. Face
2.-4. Face - details



2



3



4



GOSFORTH III
Height - 20.3 cm.
1. Face
2. Dexter

GOSFORTH IV
Height - 63.5 cm.
3. Face
4. Face

GOSFORTH V
Height - 58.4 cm
5. Face
6. Reverse (after W.S.
Calverley)



2



3



4



5



6



GOSFORTH VI AND VII

1. West gable-ends

—————

GOSFORTH VI

length - 167.6 cm.

(Photos. from prints in
Gosforth vicarage)

2. South side

3. North side and east
gable-end

4. North side and west
gable -end

5. North side



5



3



4



2



GOSFORTH VI
 Length - 167.6 cm.
 (see preceding sheet)
 1.-2. South side
 3. South side - detail
 4. East gable-end
 5. West gable-end

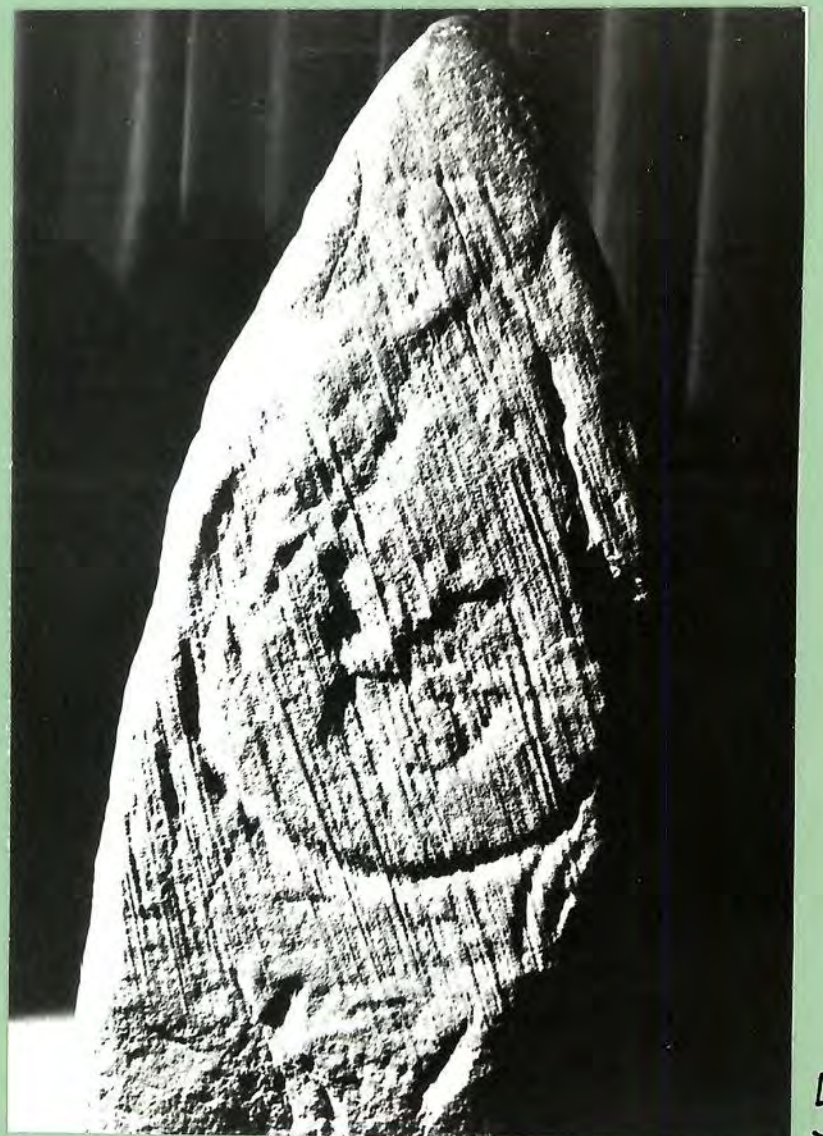
1



2



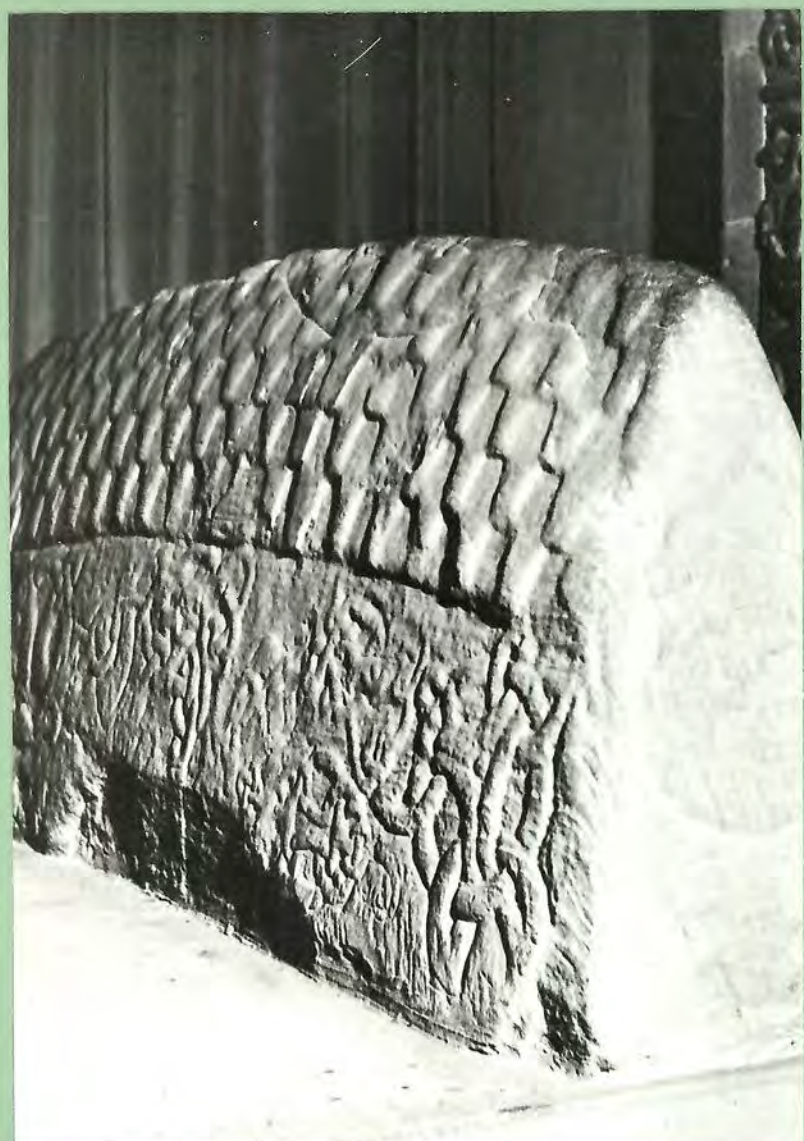
3



5



4



GOSFORTH VI

Length - 167.6 cm.

(see preceding sheets)

1. North side

2. North side

3.-5. North side -
details



2



3



4

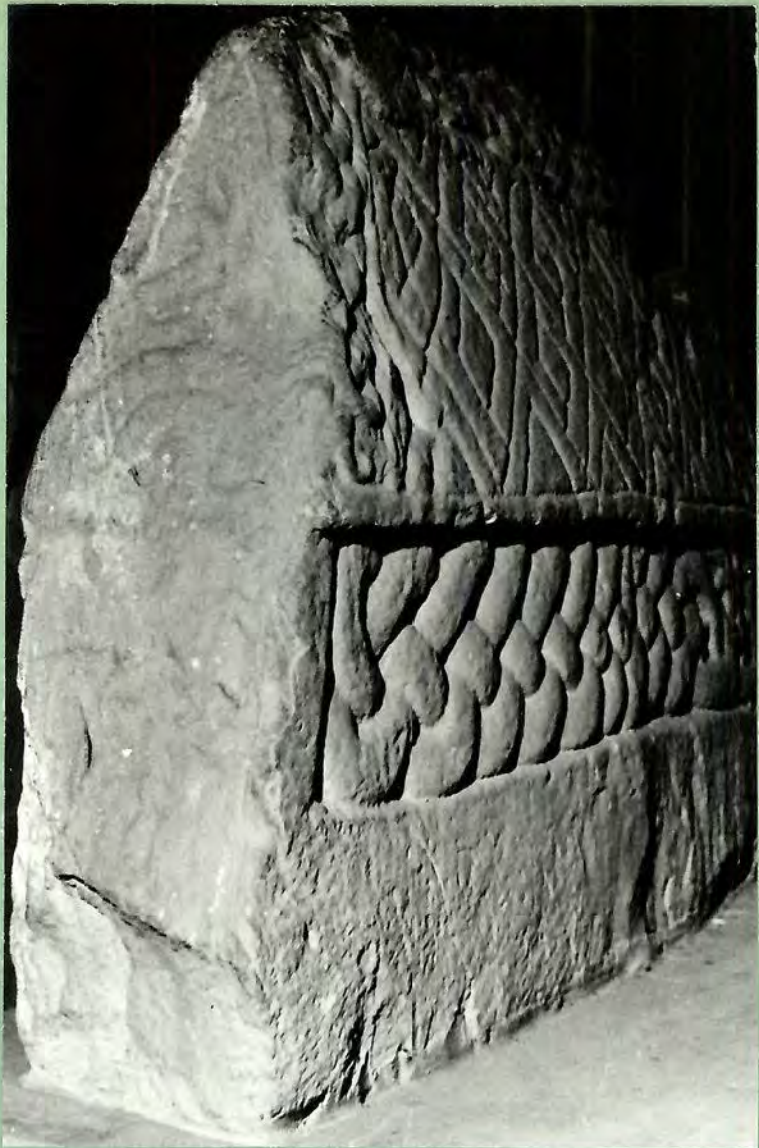


5

GOSFORTH VII

Length - 156.8 cm.

- 1. South side and west gable-end
- 2. North side and west gable-end
- 3. North side and east gable-end
- 4. West gable-end
- 5. East gable-end
- 6. West gable-end





GOSFORTH VII

Length - 156.8 cm.

(see preceding sheets)

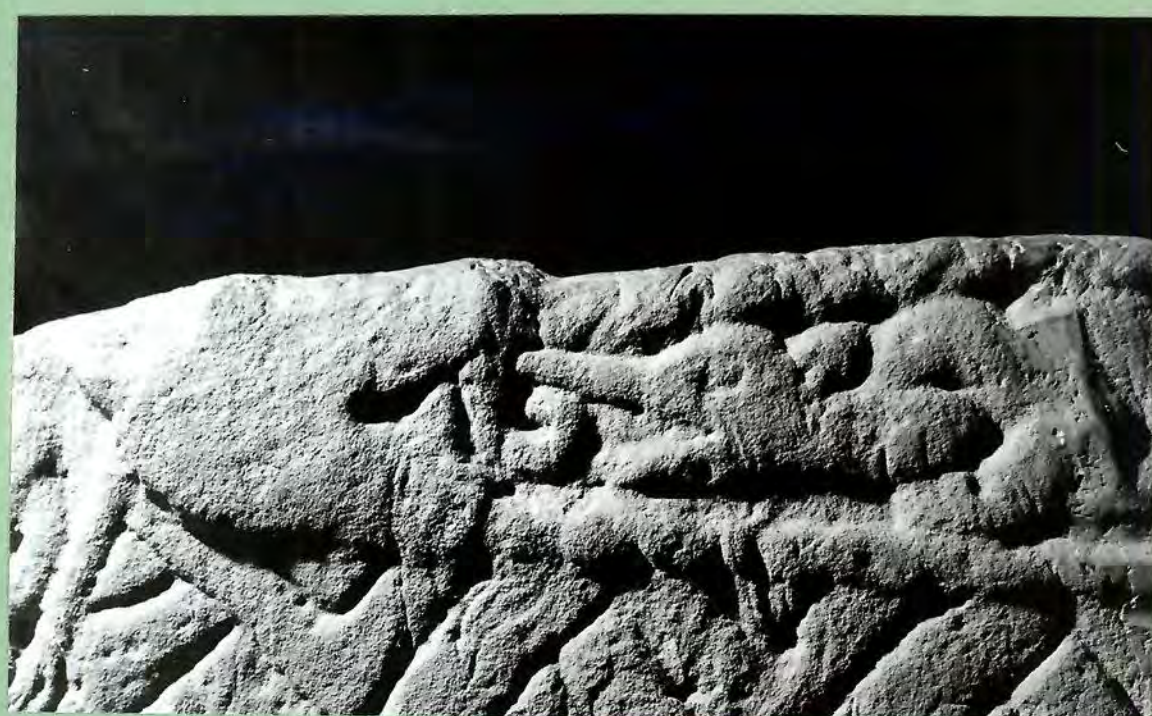
1. South side

2. South side -detail

3. North side - detail

4. - 5. South side - details

6. - 7. North side - details



GREAT CLIFTON
Height - 144 cm.
1. - 2. Face
3. Reverse
4. Sinister
5. Dexter



1



2



3



4



5

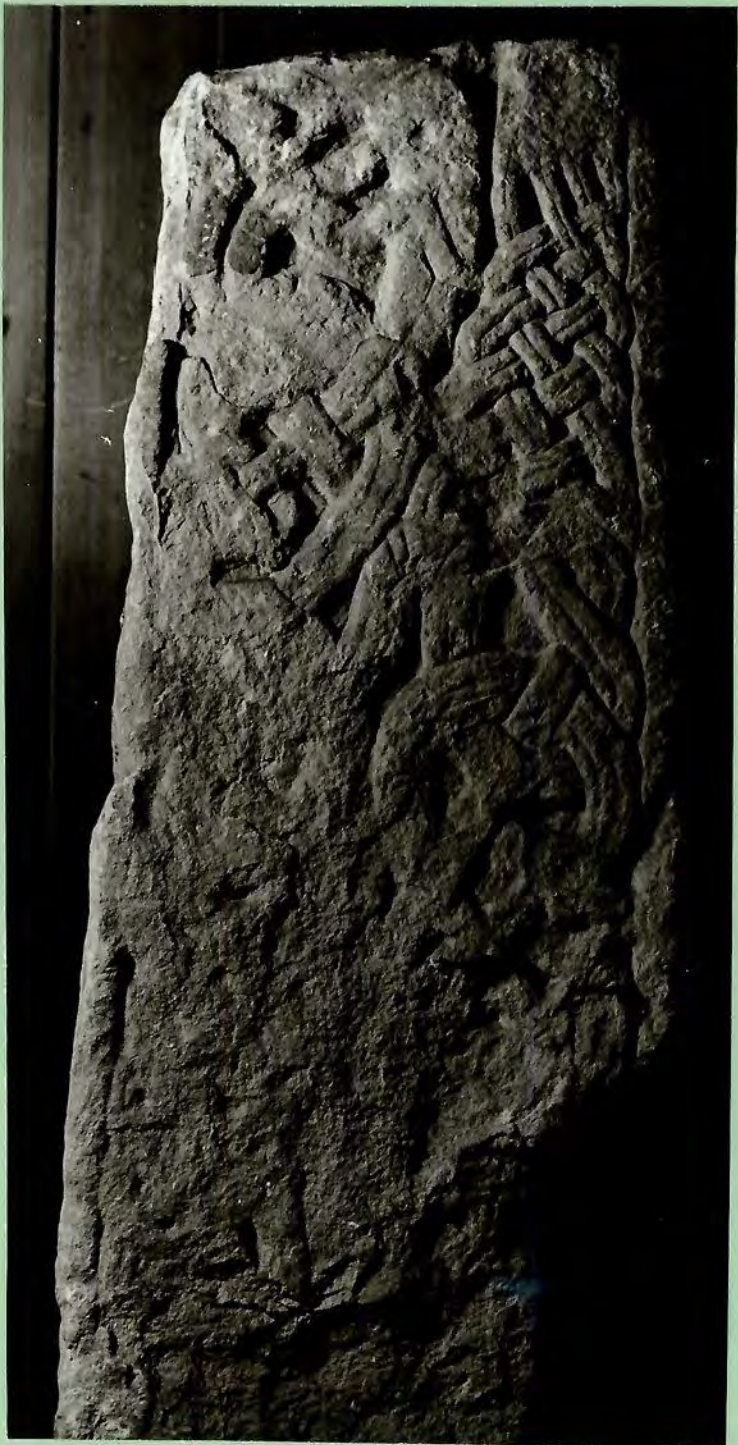


1



2

GREAT CLIFTON
(see preceding sheet)
Height - 144 cm.
1. Face - detail
2. Face - detail
3. Reverse - detail
4. Sinister - detail



3



4



1

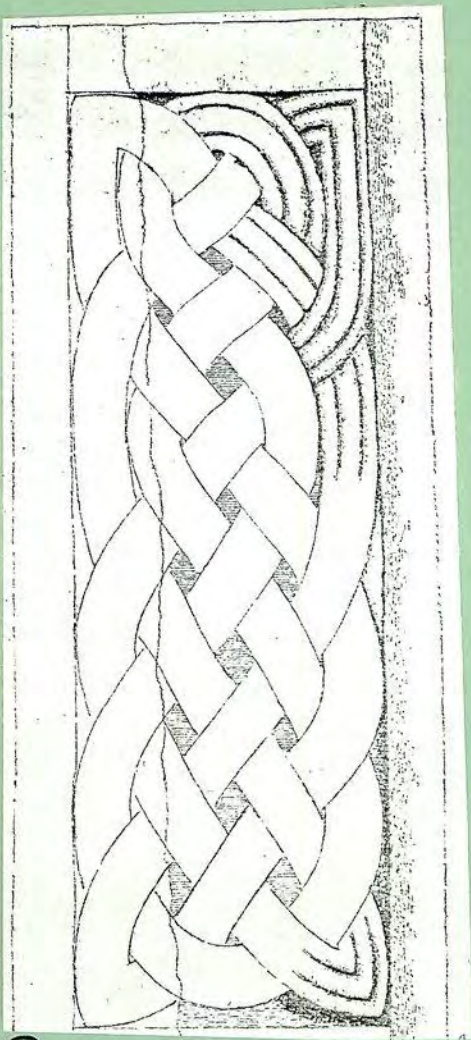
HAILE I
Height - 45.5 cm.
1. Face

HAILE II
Height - 103 cm.
2. Face
3. Face after E.H.Knowles 1878
4. Narrow side

HAILE III
Height - 99 cm.
5. Narrow side



2



3



4



5



HAILE IV
Height - 78.9 cm.

1. Narrow side
2. Narrow side after E.H. Knowles 1878
3. Broad side

HAILE V
Height - 69 cm.

4. Broad side
5. Narrow side

? HAILE VI & VII

6. After E.H. Knowles 1878

2



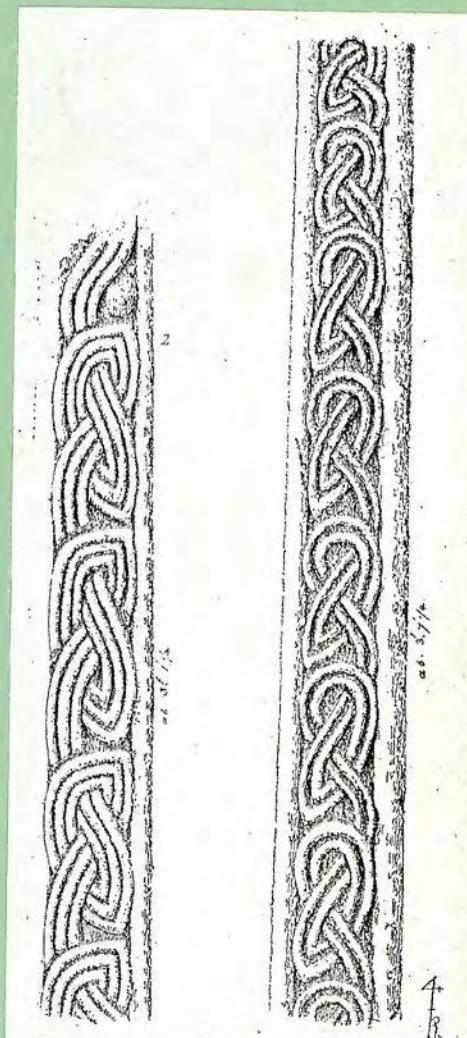
3



4



5



6

HARRINGTON

Height - 30.5 cm.

1. Face

2. Reverse

3. Sinister

4. Dexter



2



3



4



1



3

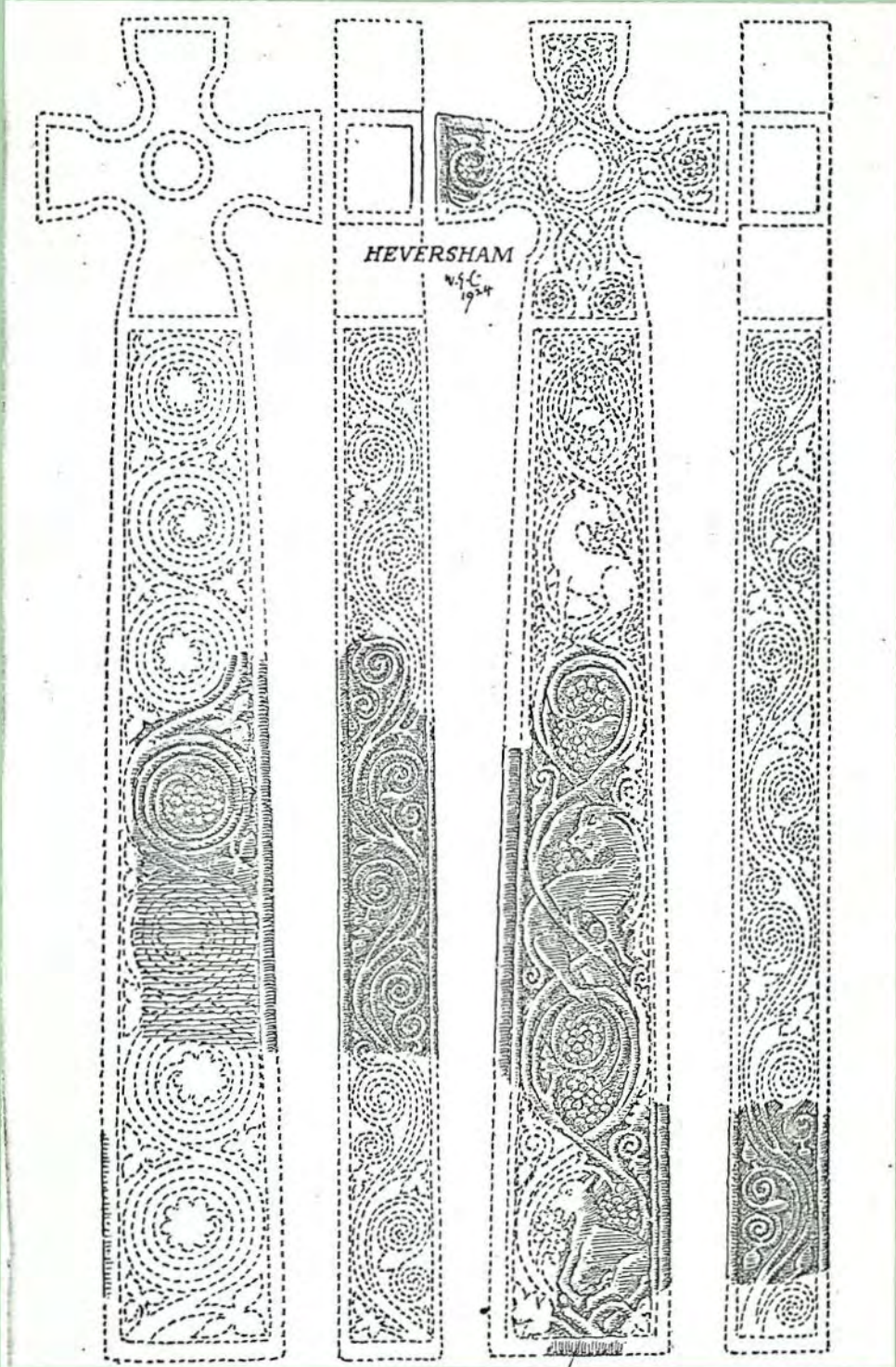


4



2

HEVERSHAM I
Height - 139.7 cm.
1. Face
2. Dexter
3. Face - detail
4. Face - detail
5. After J.F. Curwen 1925



5

HEVERSHAM II

Height - 7.6 cm.

1. Face

(see also
preceding sheet)

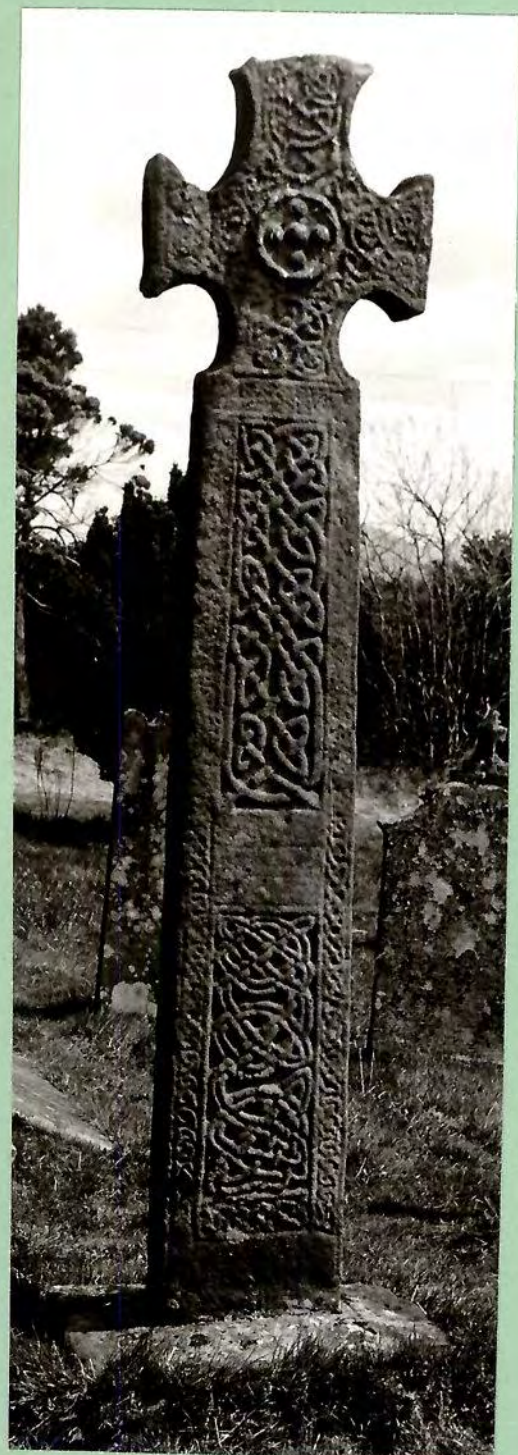
HUTTON IN THE FOREST

Height - 16.5 cm.

2. Face



2



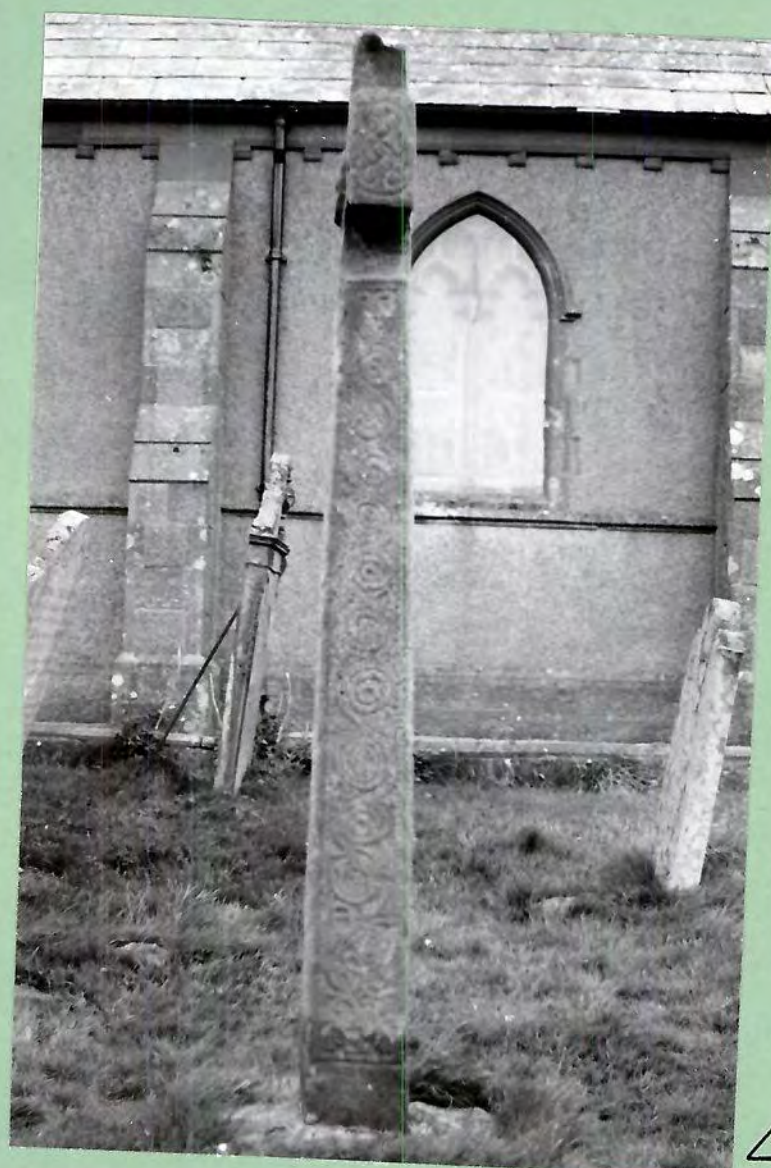
IRTON I
Height - 304.5 cm.
1. West side
2. East side
3. North side
4. South side
(see next sheet)



2



3



4

IRTON I

Height - 305.5 cm.

1. East side - detail
2. North side - detail
3. West side - detail
4. North side - detail
5. South side -detail



1



2



4



3



5

IRTON II
Height - 39 cm.
1. West side
2. North side
3. East side
4. West side after
C.A. Parker 1926



1

2

3

4



ISEL 1
Heights - (A) 48 cm.
(B) 48 cm.
(In all photographs (A) is
on the sinister side)
1. Face
2. Reverse
3. Dexter
4. Sinister



ISEL II
Height - 26.7 cm.
5. Face
6. Reverse
7. Sinister
8. Dexter



5

6

7

8

KENDAL

Height - 50 cm.

1. Face

2. Dexter

3. Reverse



1



2



3

KIRKBY STEPHEN I

Height - 65 cm.

- 1. Face
- 2. Sinister
- 3. Dexter



3



2



1

KIRKBY STEPHEN II
Height - 60 cm.
1. Broad side
2. Cylindrical side - centre
3. Cylindrical side - dexter
4. Cylindrical side - sinister

KIRKBY STEPHEN III
Height - 22 cm.
5. Face



3



2



4



5



KIRKBY STEPHEN IV
Height - 61 cm.
1. Face
2. Reverse
3. Sinister
4. Dexter

KIRKBY STEPHEN V
Height - 25.4 cm.
5. After W.G. Collingwood 1912a

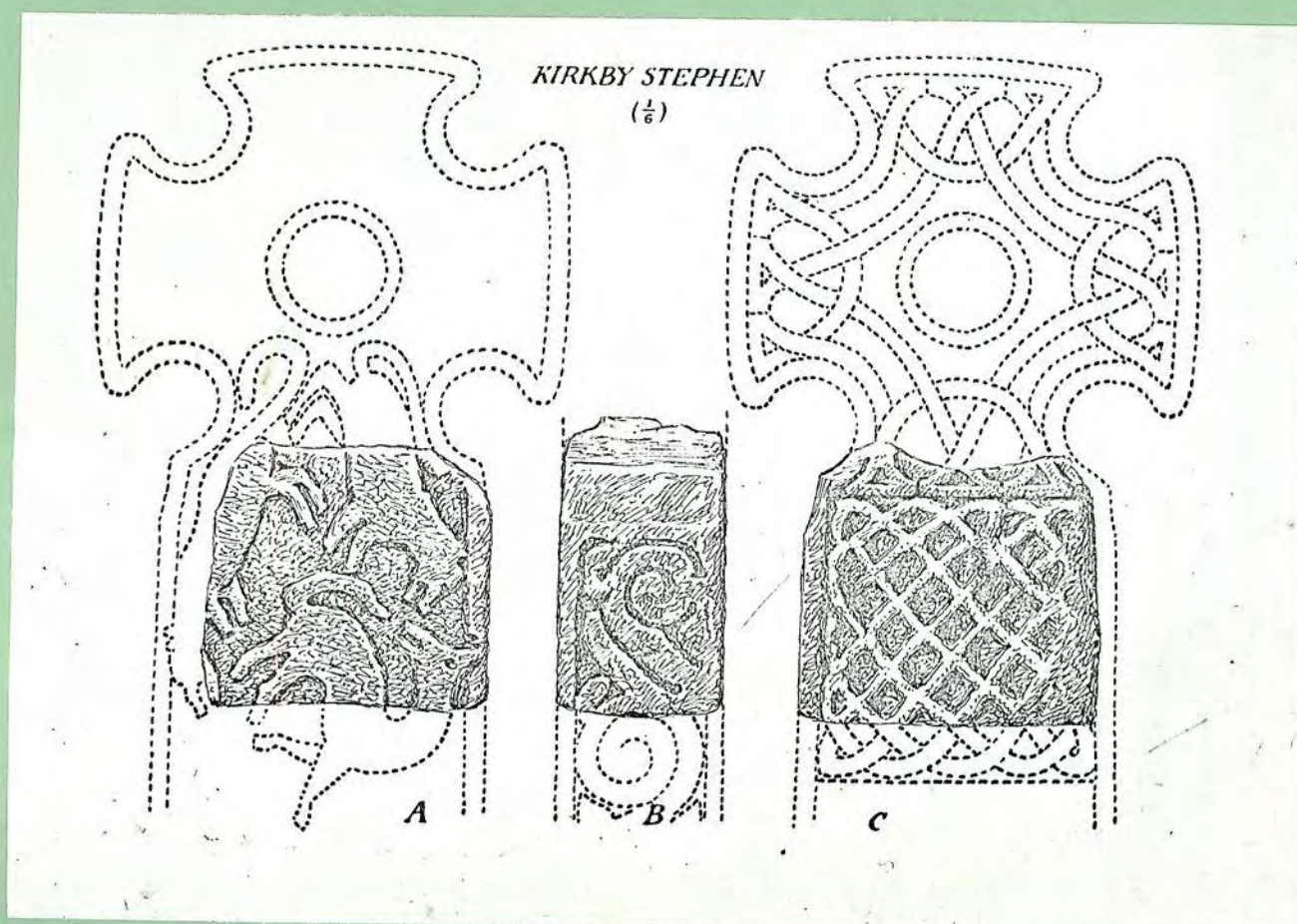
2



3



4



5

KIRKBY STEPHEN VI

Height - 27 cm.

1. Face

KIRKBY STEPHEN VII

Height - 50 cm.

2. Face

3. Reverse



KIRKBY STEPHEN VIII

Height - 36 cm.

- 1. Face
- 2. Reverse
- 3. Side

KIRKBY STEPHEN IX

Length - 80.6 cm.

- 4.-5. Sides



1



3



2



4



5



KNELLS

Height - 106.5 cm.

1. Face

LOWTHER I

Height - 22.6 cm.

2. Face



2

LOWTHER II

Height - 173 cm.

- 1. Face
- 2. Reverse
- 3. Dexter
- 4. Sinister



1



2



3



4



LOWTHER III
Height - 77cm.
(Photos. Burrell
Collection)

1. Face
2. Reverse
3. Sinister
4. Dexter

2



3



4

LOWTHER IV

Height - 38.1 cm.

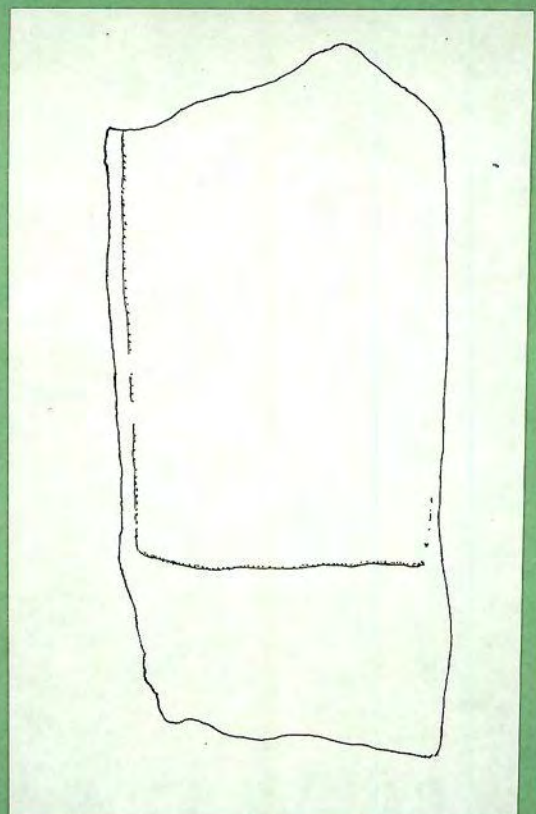
1. Face (from sketch)

—

LOWTHER V

Height - 45 cm.

2. Face



1



2



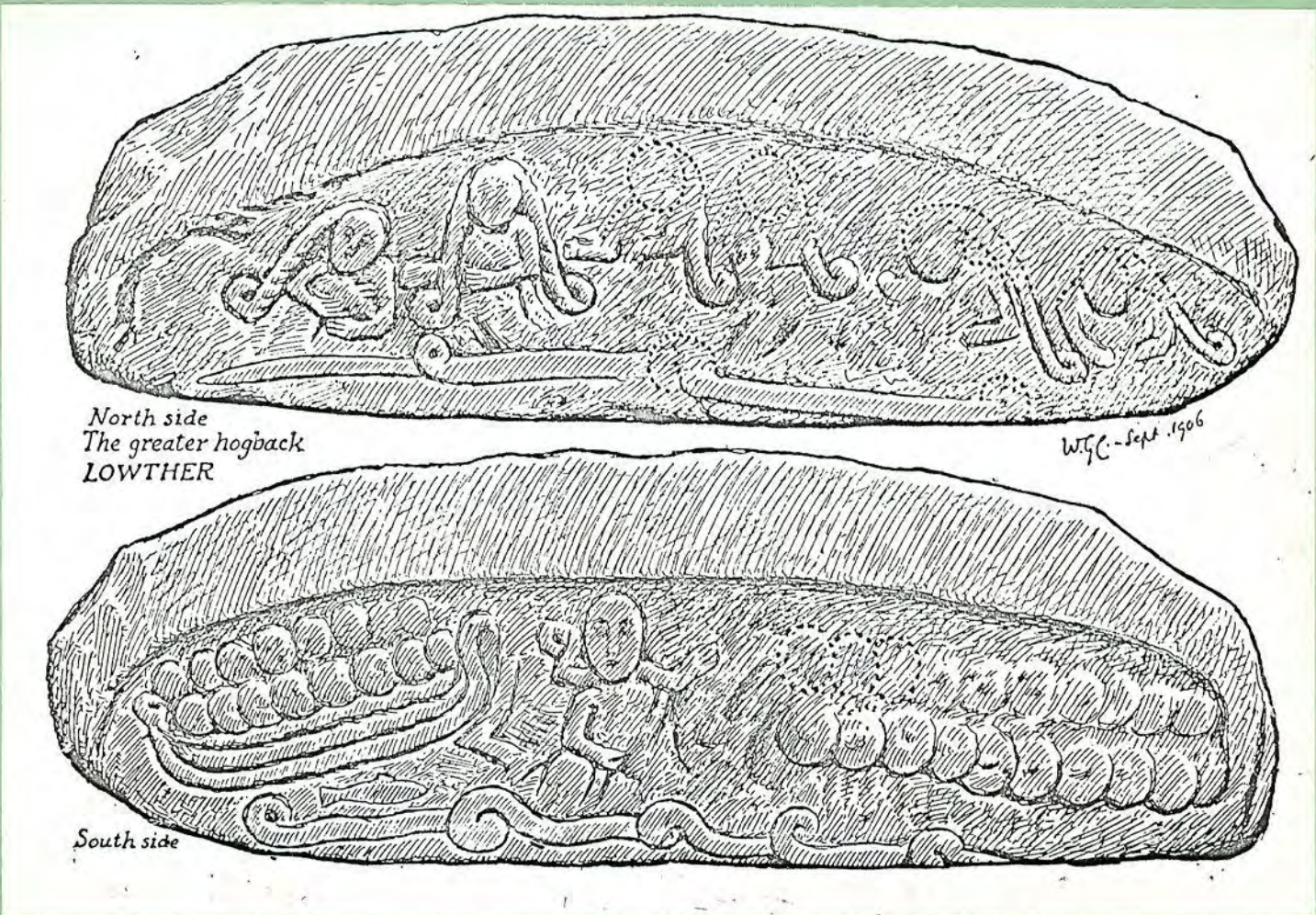
LOWTHER VI
Length - 158.7 cm.
1. Side A
2. Side A
3. Side B
4. After W.G.Collingwood 1907a



2



3

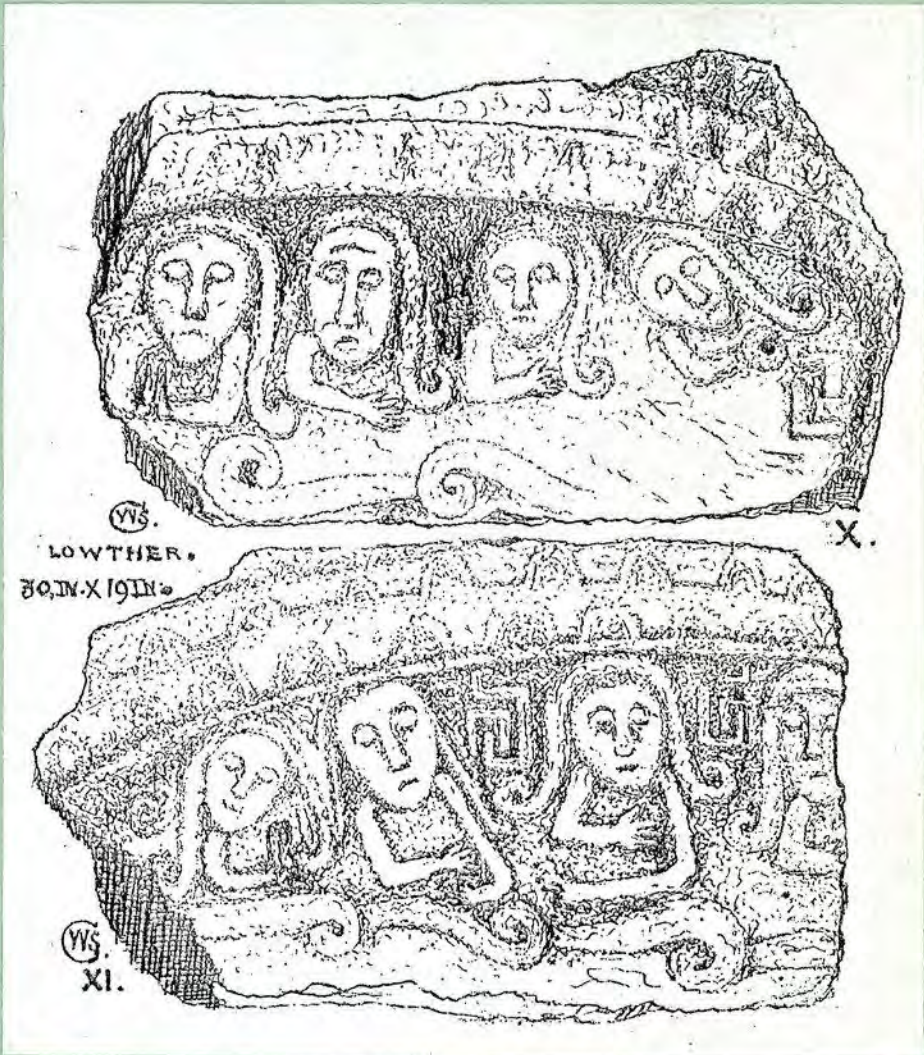
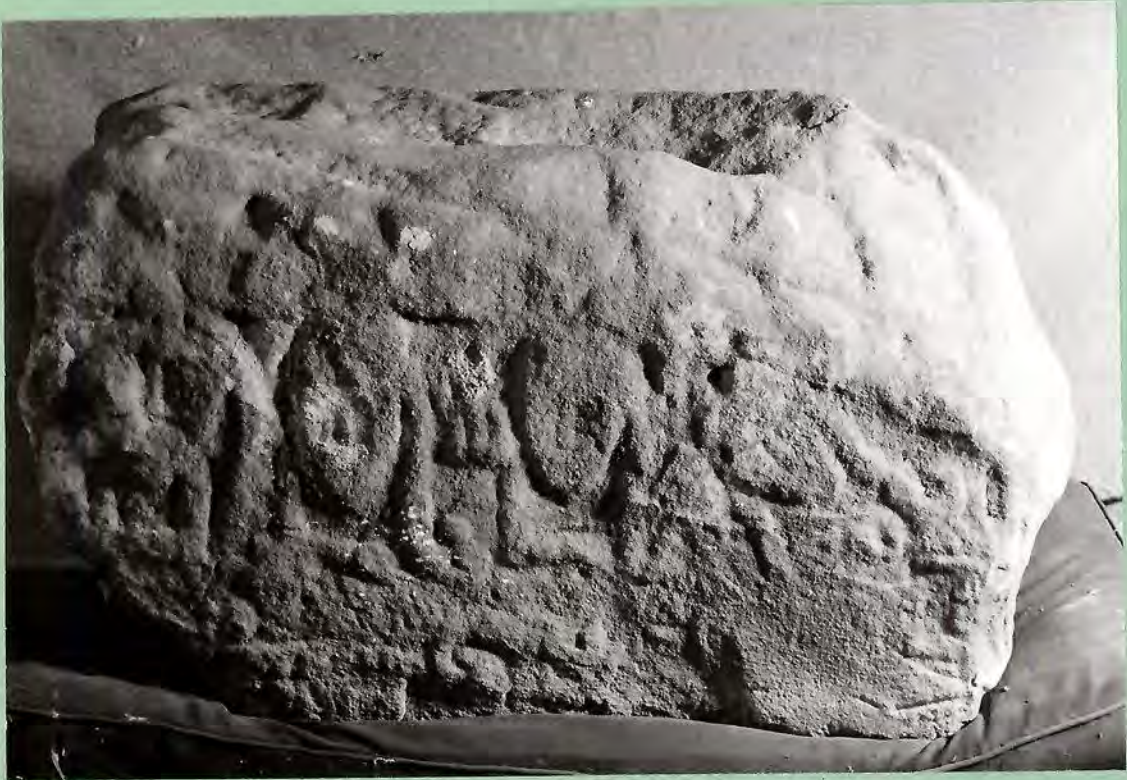


4



LOWTHER VI
Length - 158.7 cm.
(see preceding sheet)
1.-2. Side A - details

LOWTHER VII
Length 78.7 cm.
3. Side A
4. Side B
5. After W.S.Calverley 1888c





1



2

LOWTHER IX
Length - (A) 105.7 cm.
(B) 53.3 cm.
1. Face of A
2. Sinister of A
3. Dexter of A
4. Sinister of B
5. Dexter of B



3

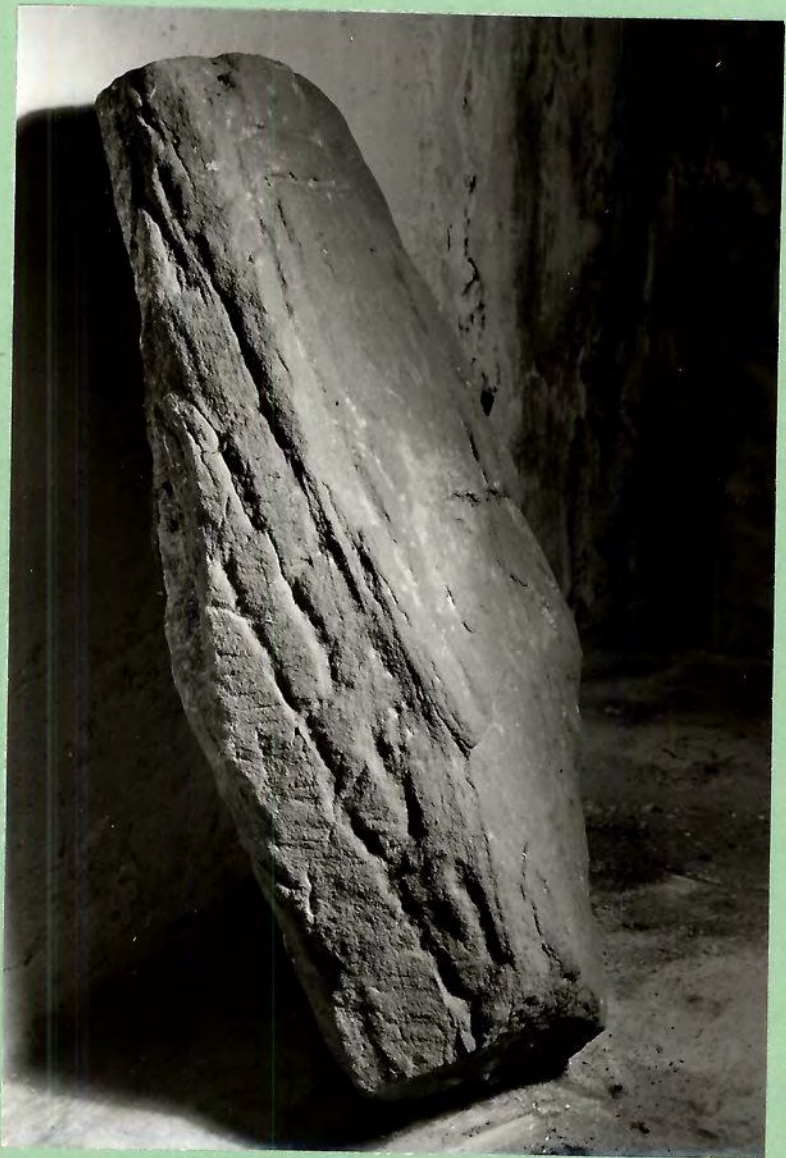


4



5

LOWTHER X
length - 72.1 cm.
1. Face
2. Dexter



MILLOM I

Height - 48 cm.

- 1. Face
- 2. Face (showing depth)

MILLOM II

Height - 15 cm.

- 3. Face

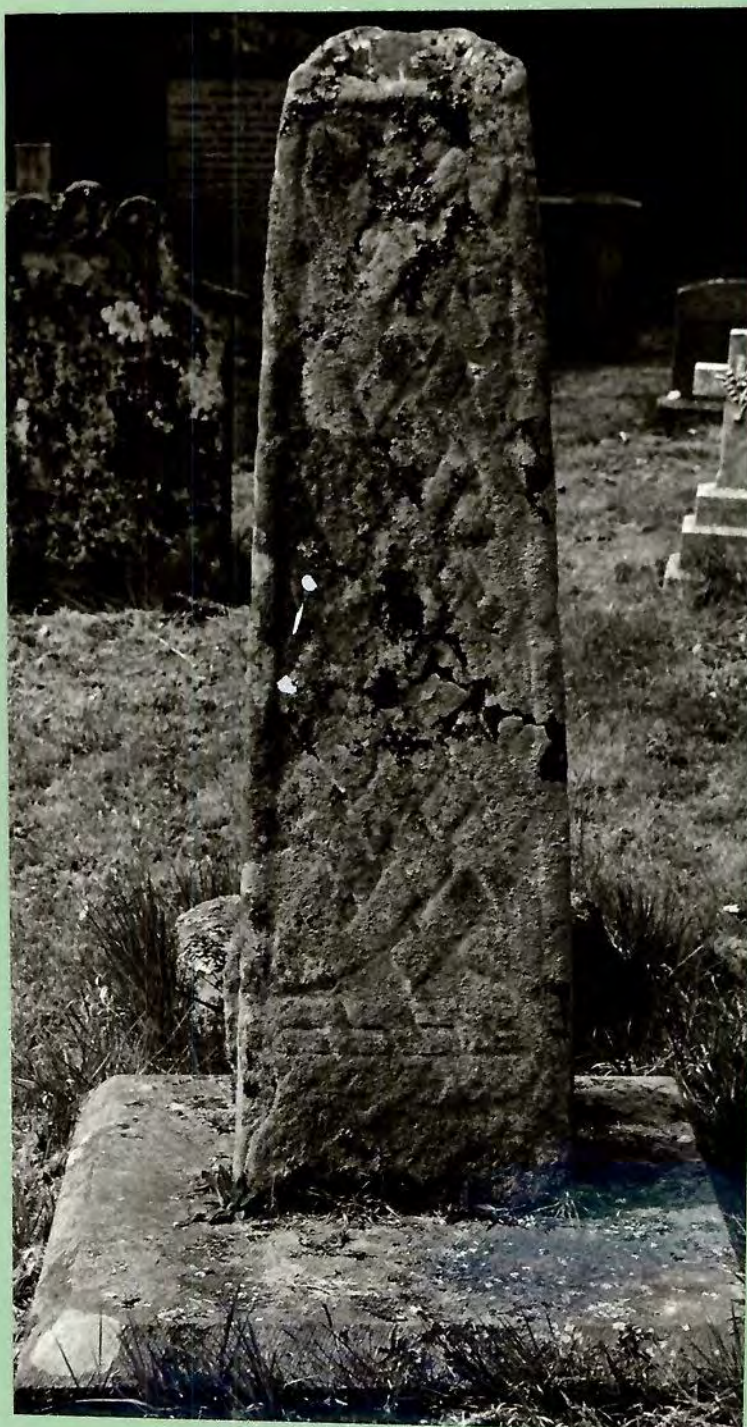


3

2



1



2

MUNCASTER

Height - 103.5 cm.

1. West side
2. East side
3. North side
4. South side
5. South side - detail



3



4

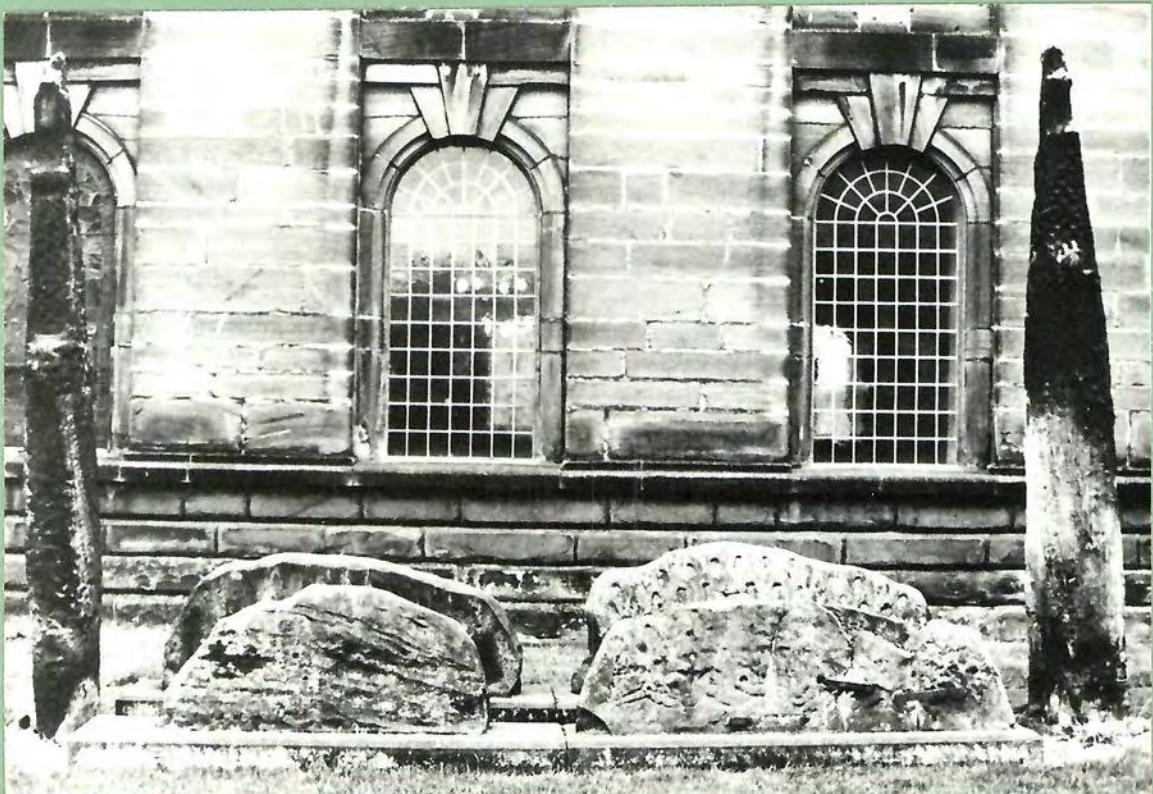


5

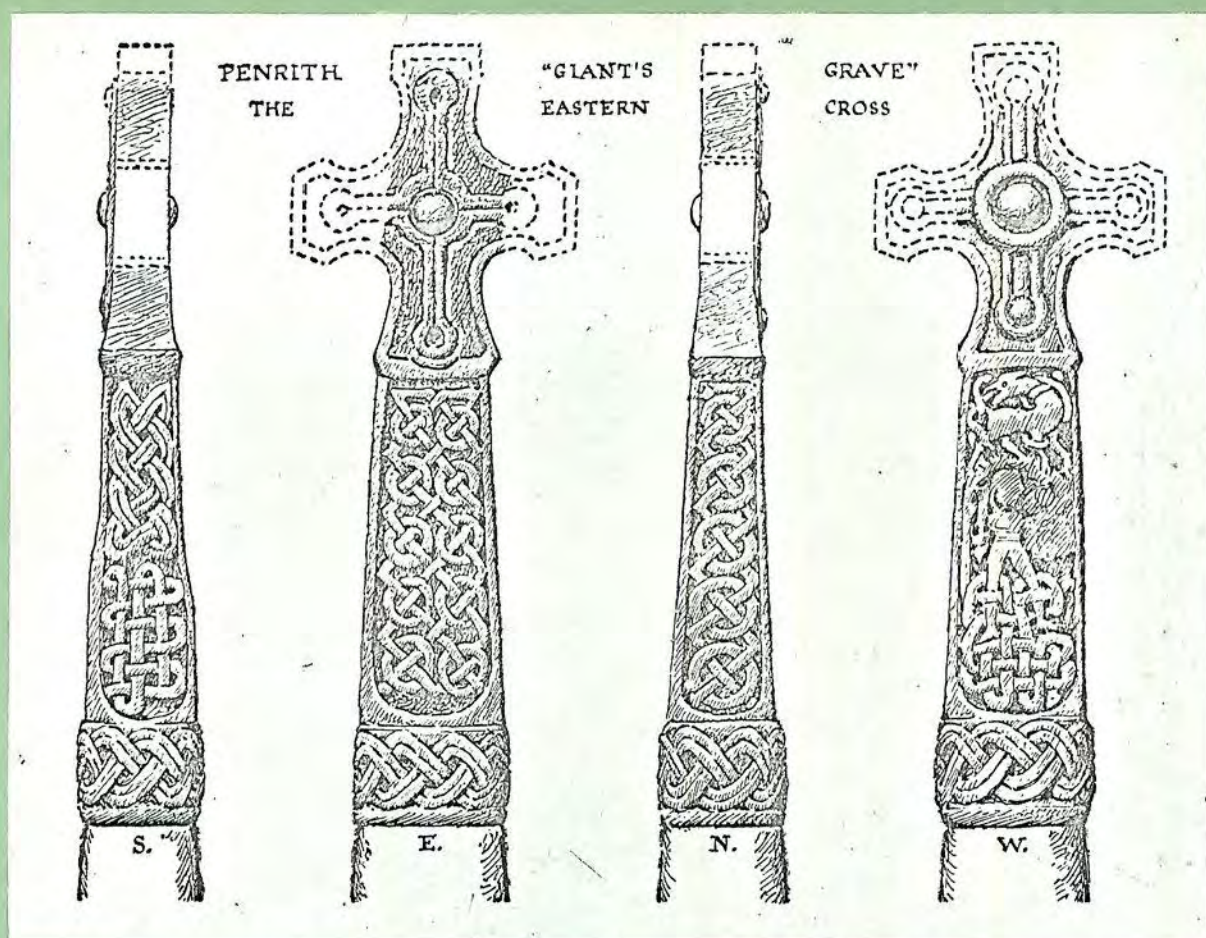
PENRITH I & II
Heights - (I) 320.1 cm.
(II) 343 cm.
1. Group from South-west
2. Group from South-east
3. Group from North



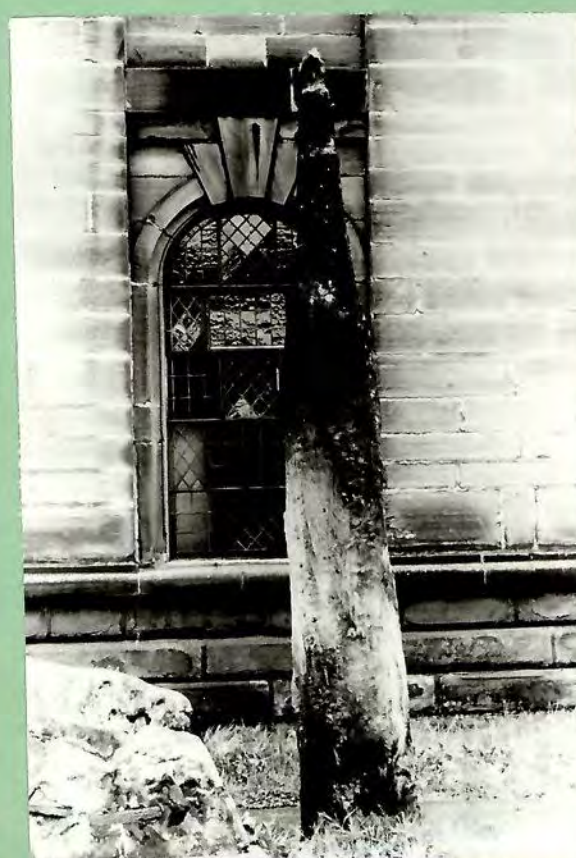
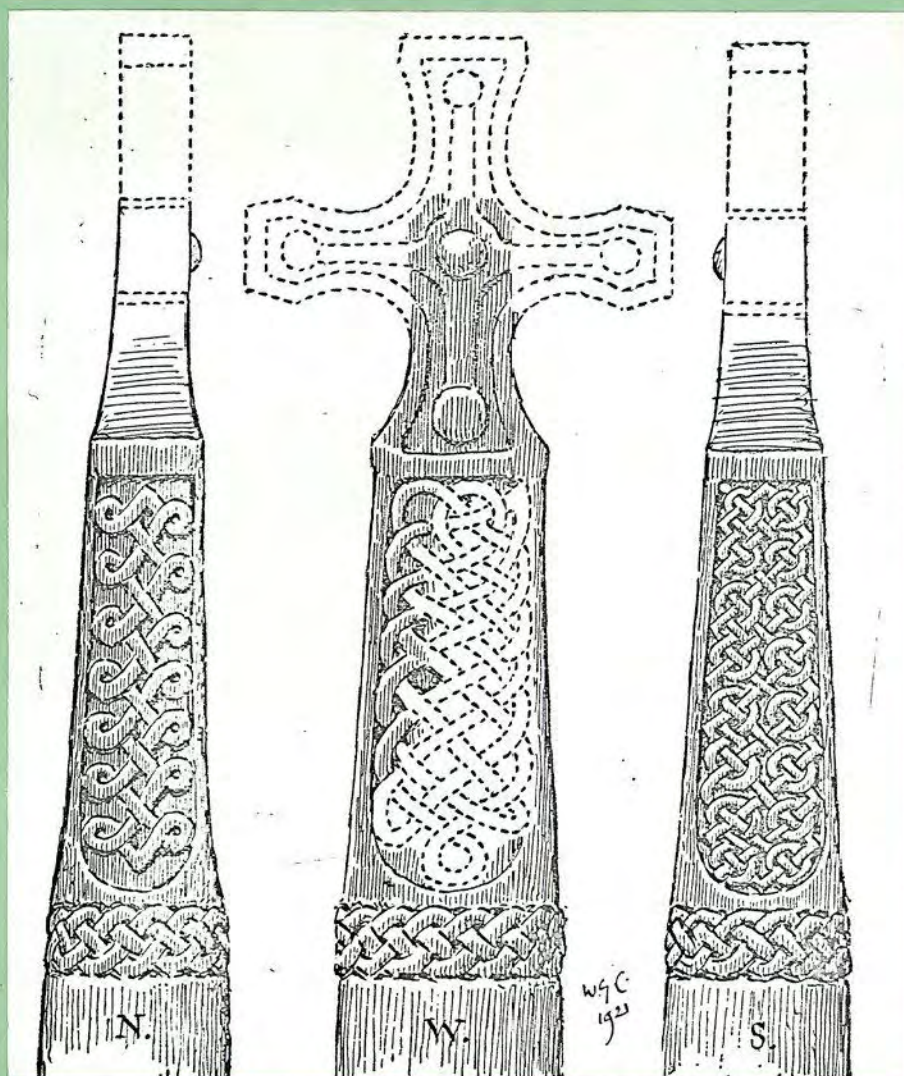
2



3



PENRITH I & II
 Heights - (I) 320.1 cm
 (II) 343 cm.
 (see preceding sheet)
 1. Penrith I after W.G.
Collingwood 1923
 2. Penrith II after W.G.
Collingwood 1923
 3. Penrith I - East
 4. Penrith I - West
 5. Penrith I - North
 6. Penrith II - North





1



2

PENRITH III
Height - 195.7 cm.
1. East side
2. West side
3. South side
4. North side - detail
5. North side- detail
6. After W.G.Collingwood 1920



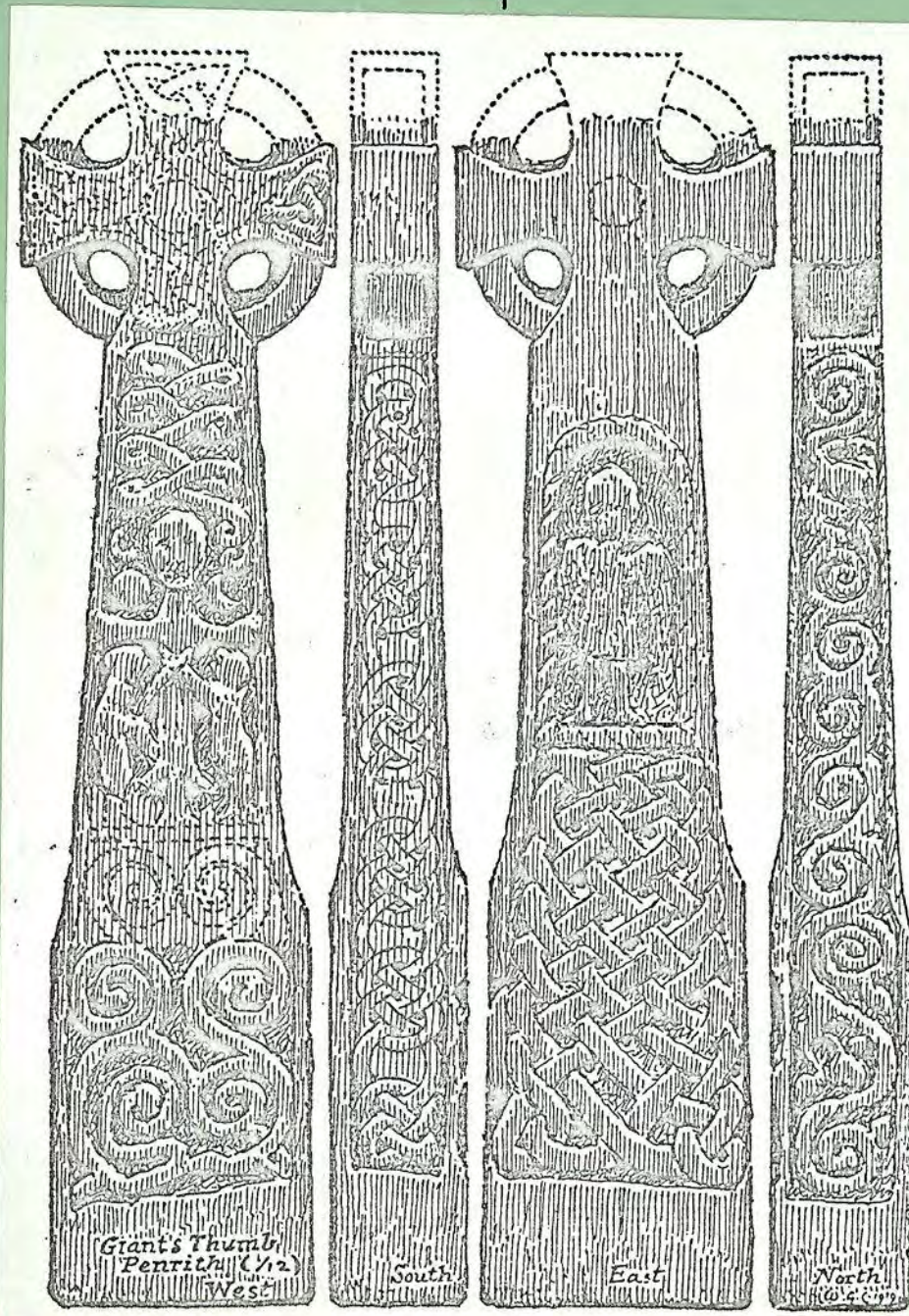
3



4

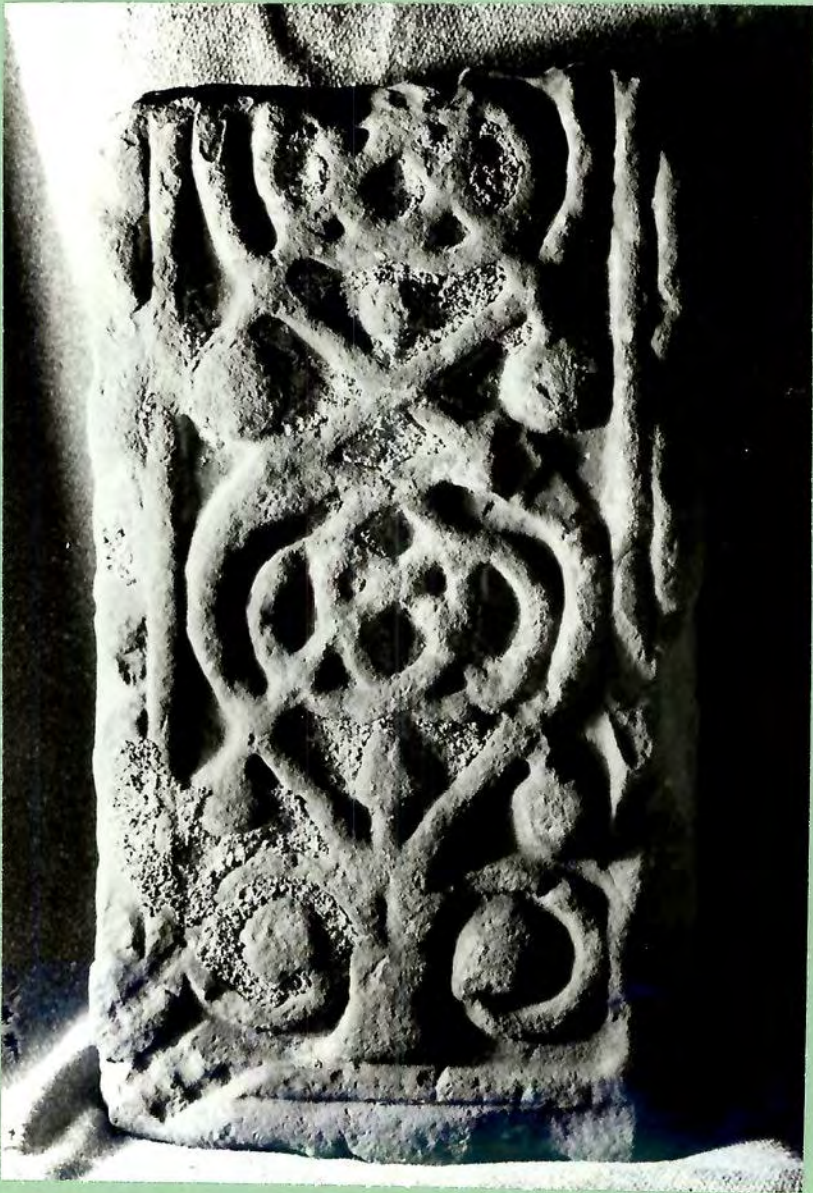


5



6

PENRITH IV
Height - 46 cm.
1. Face
2. Dexter
3 Sinister



1



2



3



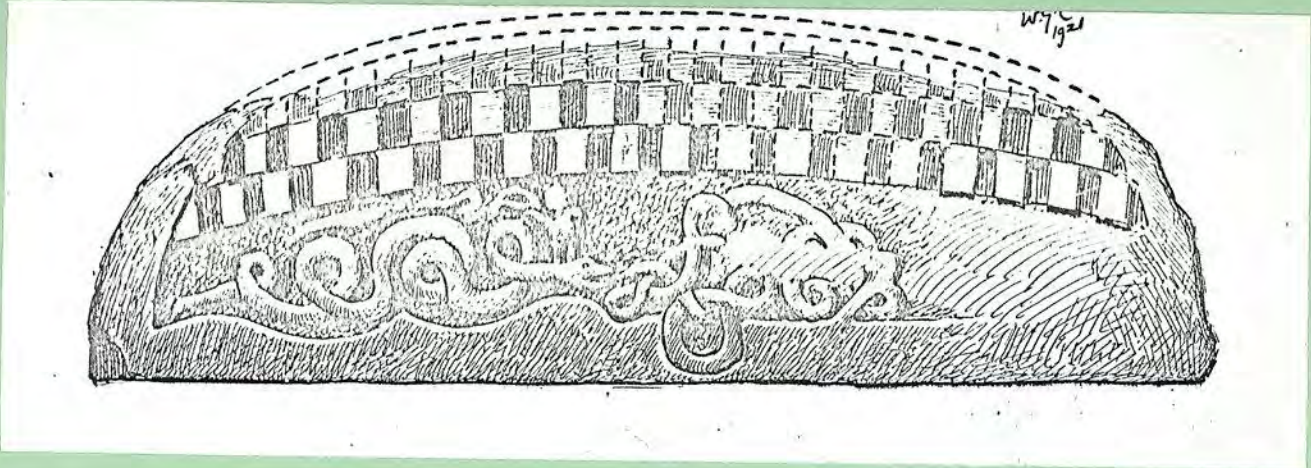
PENRITH V
Length - 180 cm.
1. South side

PENRITH VI
Length 199 cm.
2. North side
3. After W.G.Collingwood 1923

PENRITH VII
Length - 147.5 cm
4. North side



2



3



4



PENRITH VIII

Length - 194.5 cm.

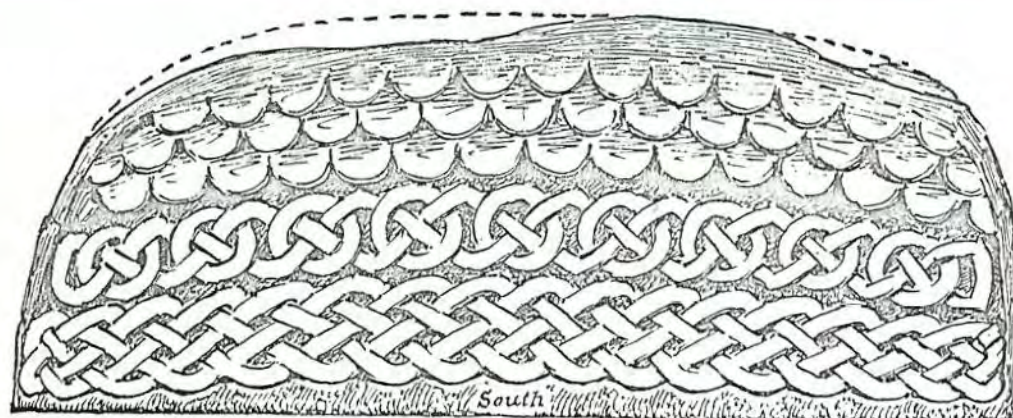
1. South side
2. North side
3. North side
4. After W.G. Collingwood 1923



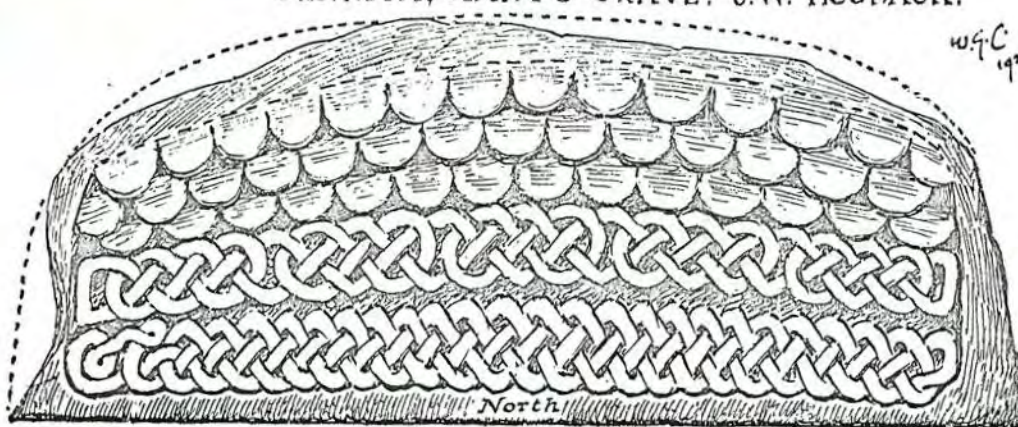
2



3



PENRITH, GIANT'S GRAVE: S.W. HOGBACK.

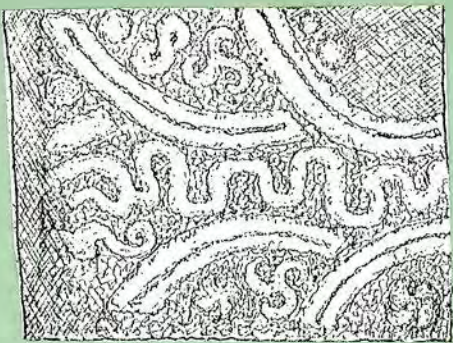


4



PLUMBLAND I
Length 35.5 cm.
1. Face
2. After W.S.Calverley 1891b

PLUMBLAND II
Length - (A) 74.3 cm.
(B) 78.7 cm.
3. Side of B
4. Gable-end of B
5. Side of A
6. Gable-end of A
7. Gable -end of A
after W.S.Calverley 1888c



2



3



4



5



6



7

IV.

ROCKCLIFFE I

Height - 192 cm.

1. East side
2. East side (detail)
3. West side
4. West side (detail)



1



2



3



4



1

ROCKCLIFFE I
Height - 192 cm.
(see preceding sheet)
1. West side (detail)
2. South side
3. South side (detail)
4. North side



2



3



4



2

St BEES I
Length - 85 cm.
1. North side
2. South side
3. West side
4. East side
5. After W.S. Calverley 1899



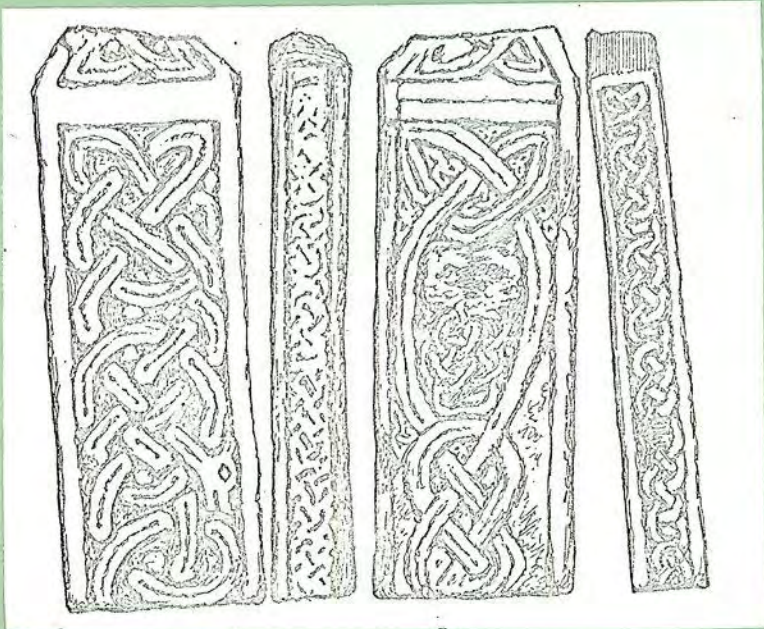
1



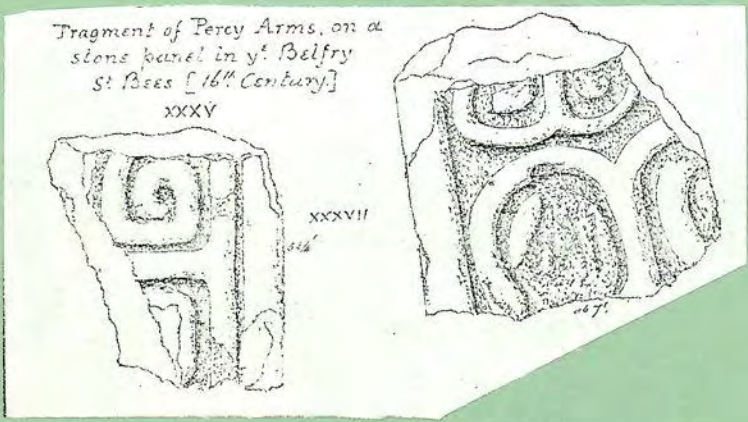
3



4



5



St BEES II
Height - 14 cm.
1. After E.H.Knowles 1878

St BEES III
Height - 71 cm.
2. Face
3. Reverse
4. Dexter
5. Sinister
6. After W.S.Calverley 1899



St BEES IV

Height not known

1. (labelled III)
after E.H.Knowles 1876

St BEES V

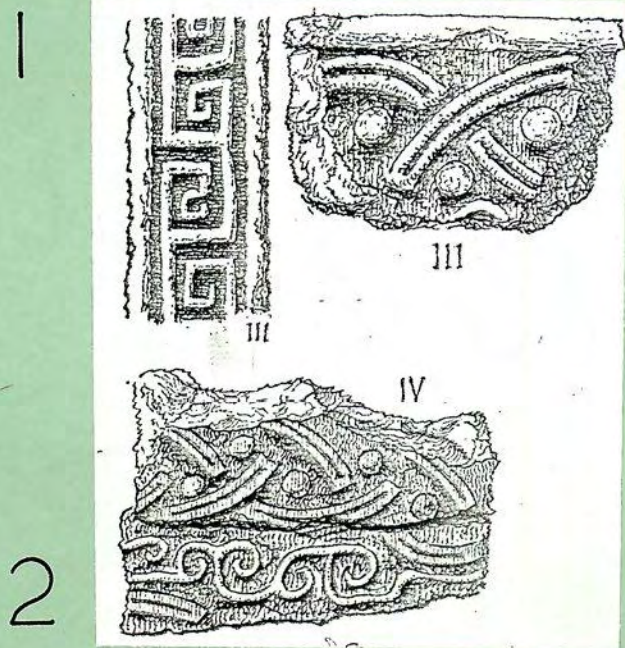
Height not known

2. (labelled IV)
after E.H.Knowles 1876

STANWIX

Height - 43.2 cm.
(photos. R. Hogg)

3. Face
4. Reverse





1



1a

URSWICK IN FURNESS I
Height - 117 cm.
1. Face
1a. Reverse after W.G. Collingwood 1911a
2. Face - detail
3. Sinister

URSWICK IN FURNESS II
Height - 37.5 cm.
4. Face
5. Sinister
6. After W.G. Collingwood 1910



2



3



5



4



6



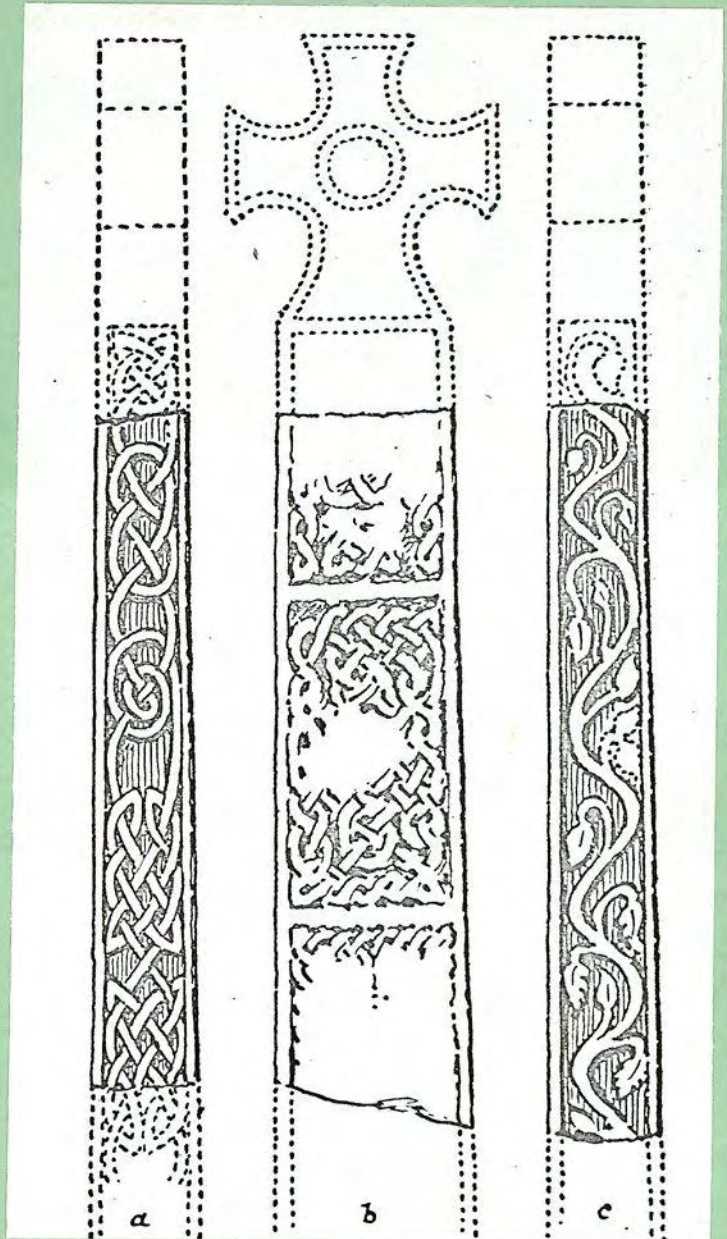
WABERTWAITE I
Height - 101 cm.
1. Face
2. Sinister
3. Dexter
4. After W.G. Collingwood 1925



2



3



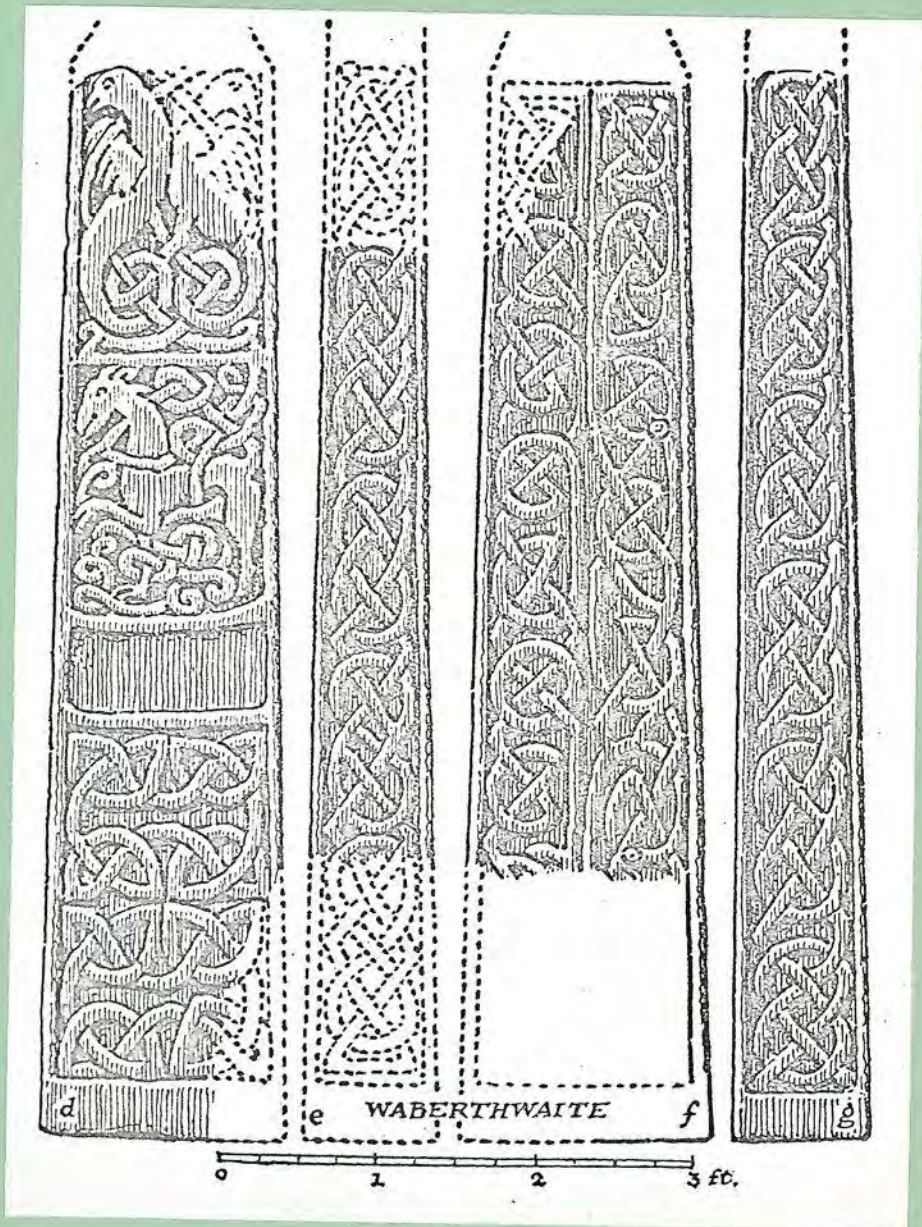
4



WABERTHWAITE II
Height - 200 cm.
1. East side (after W.S.
Calverley 1899)
2. West side (after W.S.
Calverley 1899)
3. North side
4. South side
5. After W.G.Collingwood 1925



2



5



4

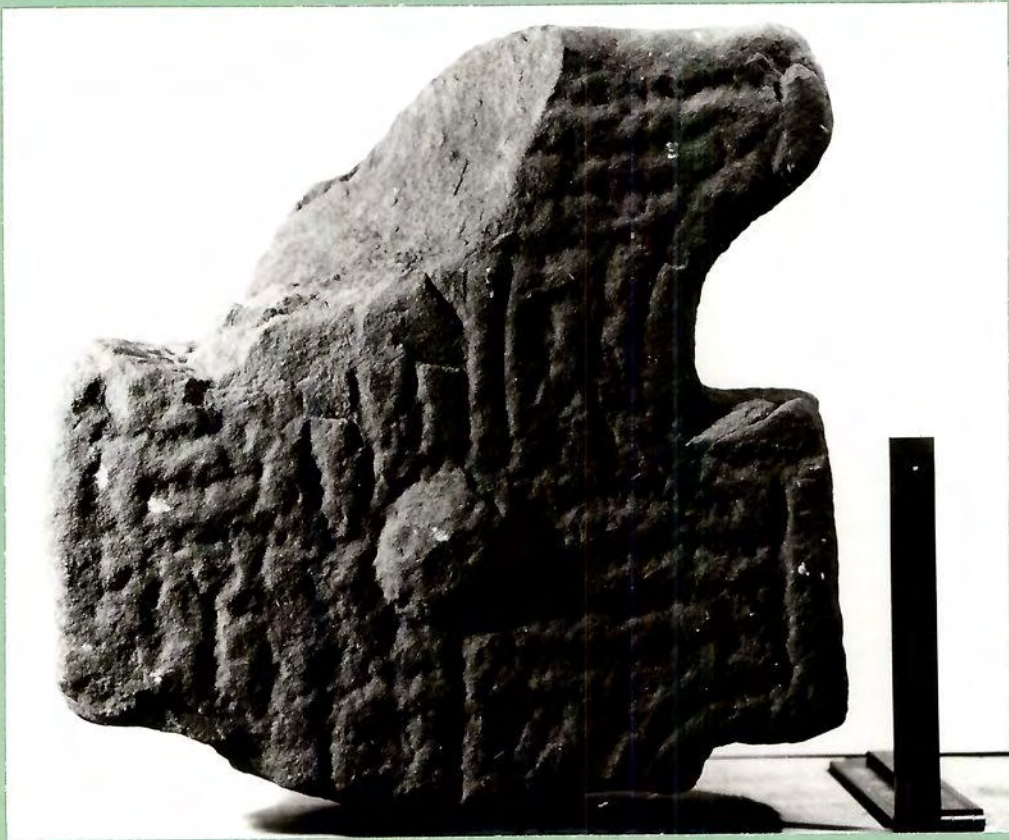
Height - 33

WALTON

Height - 31.3 cm.

1. Face

2. Reverse



WORKINGTON I

Height - 35 cm.

- 1.-2. Face
- 3. Dexter
- 4. Sinister (after
W.S. Calverley 1891b)



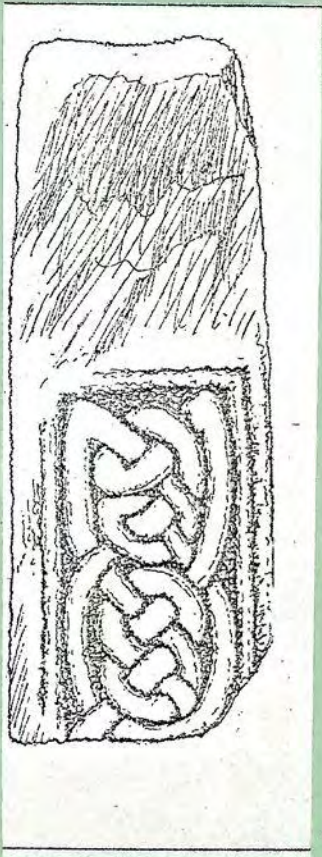
1



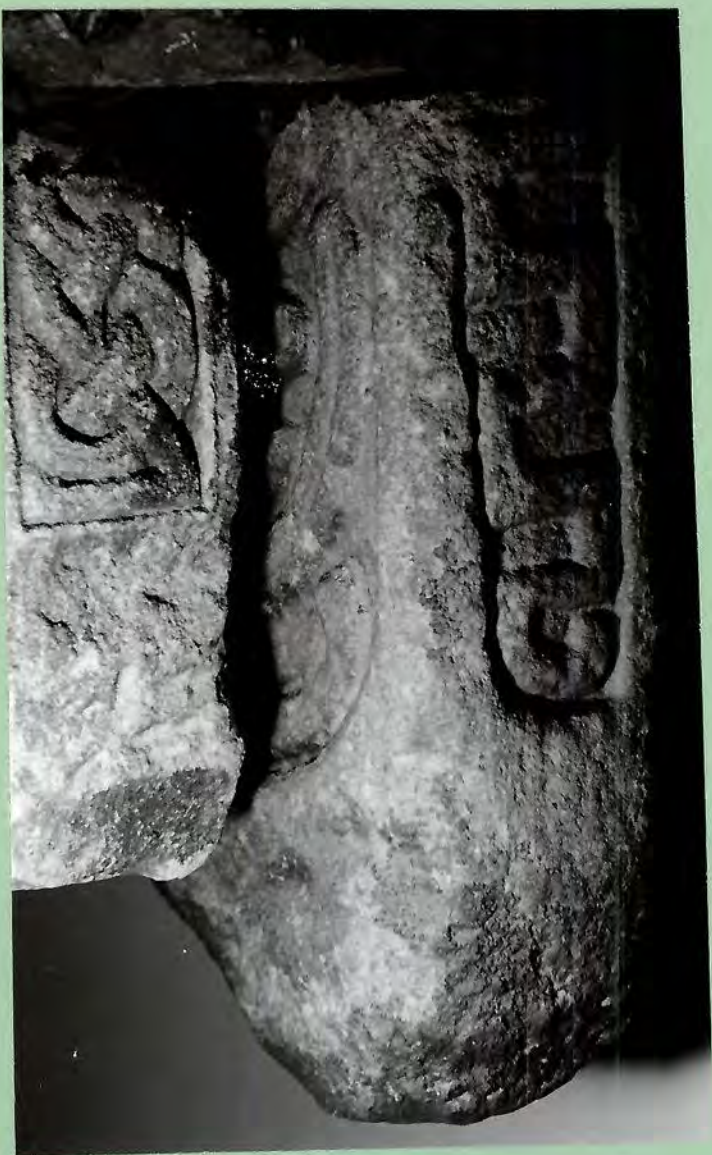
2



3



4



WORKINGTON II

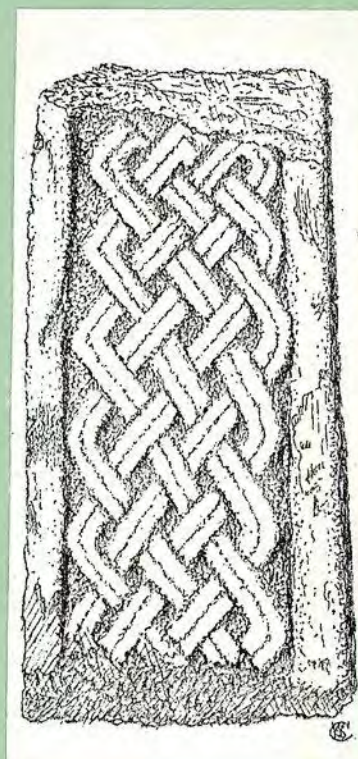
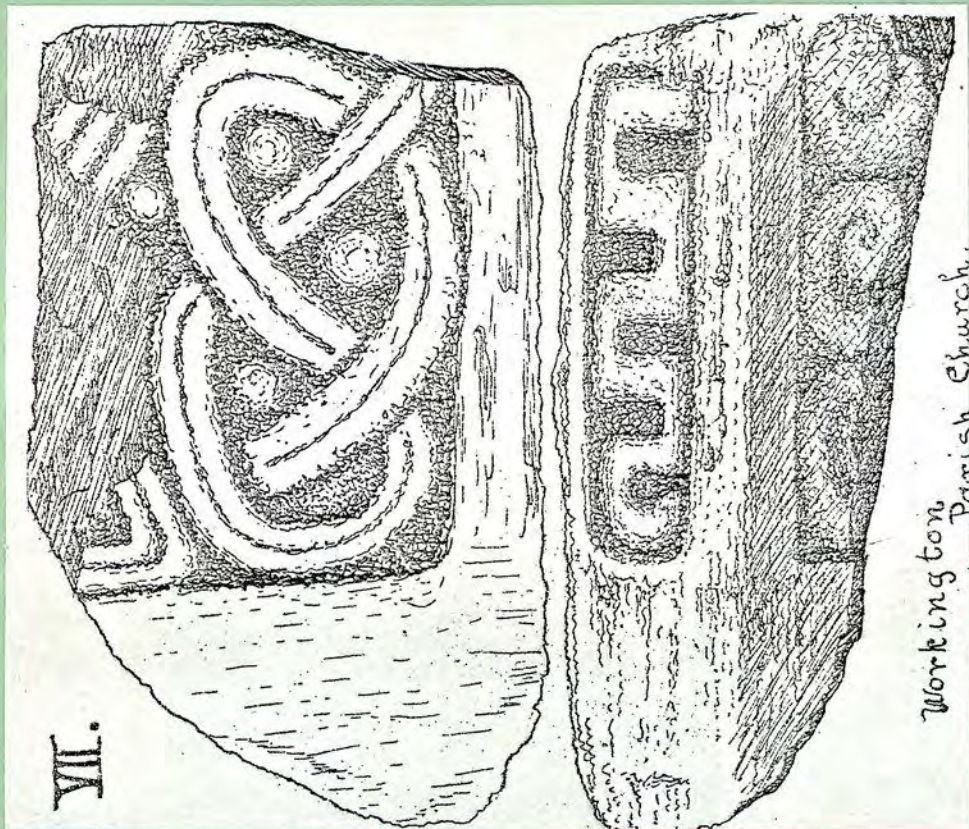
Height - 48 cm.

1. Sinister
2. After W.S. Calverley 1891b

WORKINGTON III

Height - 46 cm.

3. Face
4. Dexter
5. Sinister
6. Reverse after W.S. Calverley 1891b



2

3

4

5

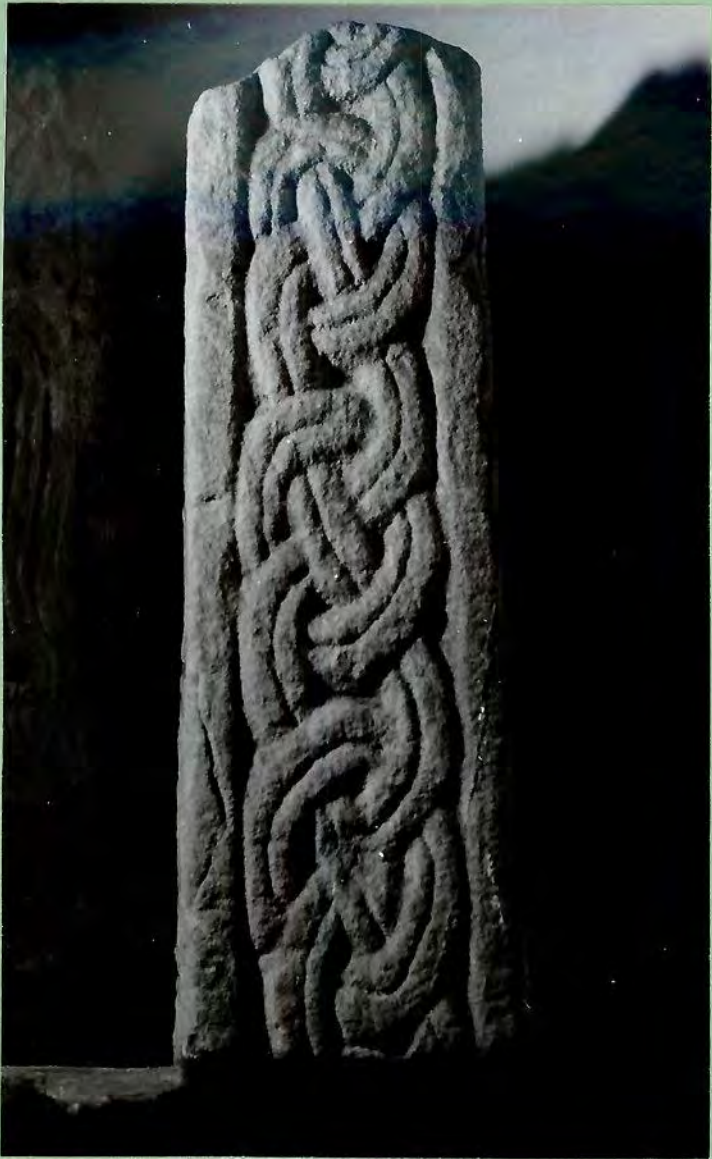
6



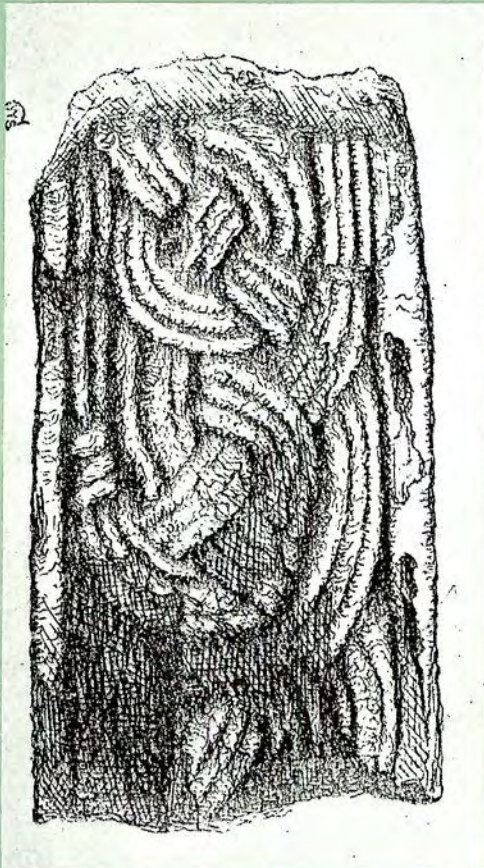
1

WORKINGTON IV
Height - 42 cm.
1. Face
2. Sinister
3. Reverse (after W.S.Calverley
1888b)
4. Dexter (af ter W.S.Calverley
1893)

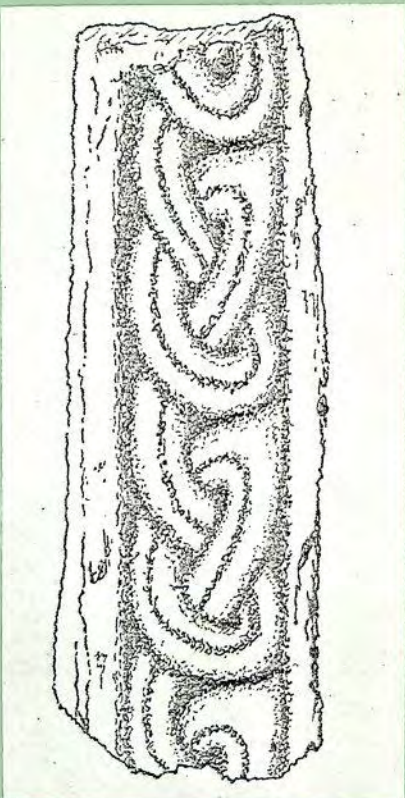
WORKINGTON V
Height - 25.5 cm.
5. After J.R.Mason and
H. Valentine 1928



2



3



4



5



1

ALL PHOTOGRAPHS : after
J.R.MASON AND H. VALENTINE 1928

WORKINGTON VI

Height - 21.6 cm.

1. Face

WORKINGTON VII

Height - 17.5 cm.

2. Face

WORKINGTON VIII

Length - 36.8 cm.

3. Side

4. end



2



3



4